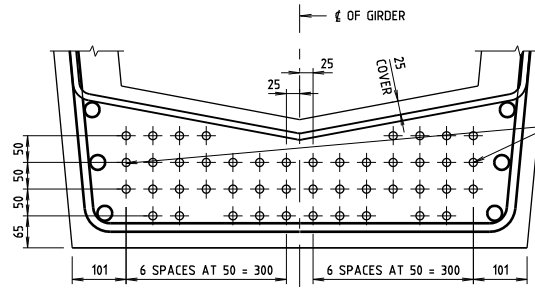
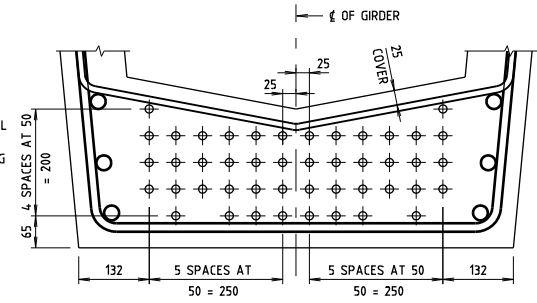


BOTTOM STRAND PATTERN FOR GIRDER TYPE T1

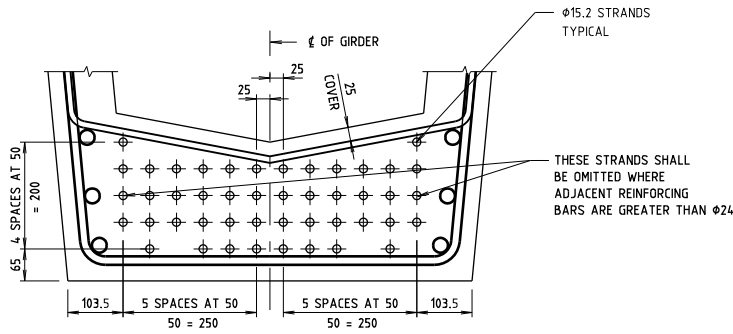


BOTTOM STRAND PATTERN FOR GIRDER TYPE T2

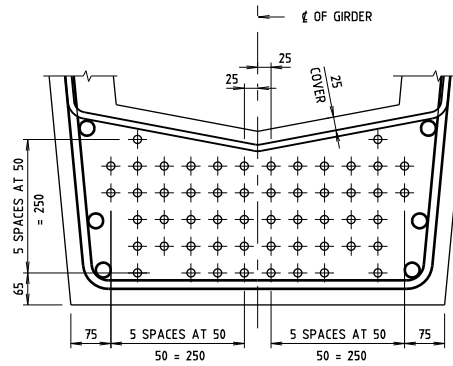
THESE STRANDS SHALL BE OMITTED WHERE ADJACENT REINFORCING BARS ARE GREATER THAN $\phi 24$.



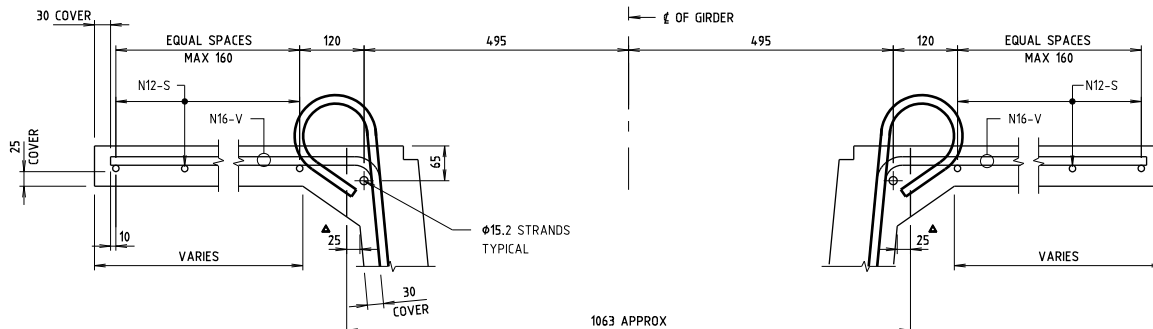
BOTTOM STRAND PATTERN FOR GIRDER TYPE T3



BOTTOM STRAND PATTERN FOR GIRDER TYPE T4



BOTTOM STRAND PATTERN FOR GIRDER TYPE T5



TOP FLANGE REINFORCEMENT DETAILS AND STRAND PATTERN - ALL GIRDER TYPES

▲ AT END DIAPHRAGM

GENERAL NOTES

SCALE 0 100 200 300mm OR AS SHOWN.

STRANDS SHALL BE 7-WIRE, ORDINARY, DIAMETER 15.2mm, TENSILE STRENGTH 1750 MPa, RELAX 2, TO AS/NZS 4672.1 WITH MINIMUM BREAKING FORCE OF 250 kN.

FOR OTHER GENERAL NOTES RELATING TO THIS SHEET SEE DRAWING No RTAB033A

APPROVED FOR USE

WARIYARATNE 09.03.2011
PRINCIPAL BRIDGE ENGINEER

© COPYRIGHT RTA, NSW 2001

ROADS AND TRAFFIC AUTHORITY OF NEW SOUTH WALES

OPEN FLANGE SUPER-T GIRDERS
REINFORCEMENT

STRAND AND REINFORCEMENT DETAILS - SHEET B

CAD No 8T_RE08.dgn