



Photo: Jayne Jenkins



# Volunteering – your waterway needs you!

## How boaters & fishers can help:

Get involved with existing voluntary organisations, eg:

Become a Fishcare Volunteer.

Visit: [www.dpi.nsw.gov.au/fisheries/recreational/info/fvp](http://www.dpi.nsw.gov.au/fisheries/recreational/info/fvp)

Become a Landcare volunteer.

Visit: [www.landcareonline.com.au](http://www.landcareonline.com.au)

For information on other volunteering opportunities visit [www.sydney.cma.nsw.gov.au](http://www.sydney.cma.nsw.gov.au) and go to the 'Healthy Waterways' page



Fishcare volunteers



Landcare volunteers



**Funding partners include:** Sydney Metropolitan CMA, Northern Rivers CMA, Hunter Central Rivers CMA, Hawkesbury Nepean CMA and Southern Rivers CMA.

**Other partners include:** NSW Department of Primary Industries, Maritime, Boat Owners Association of NSW, Boating Industry Association of NSW and Recreational Fishing Alliance of NSW.

# Be the eyes, ears & voice of the aquatic environment

- To report habitat destruction, fish kills in regional NSW and illegal fishing, phone Fisheries Watch Hotline: 1800 043 536
- To report pollution, algal blooms (marine & freshwater) and to report fish kills in the Sydney Metropolitan area, phone NSW Office of Environment & Heritage Environment Hotline: 13 15 55 (24 hours)
- To report a sighting of an aquatic pest, phone: 02 4916 3877 (recorded 24 hour service), or email: [aquaticpests@dpi.nsw.gov.au](mailto:aquaticpests@dpi.nsw.gov.au)
- Report suspicious freshwater weeds to your local council weeds officer, or phone NSW Weeds Hotline: 1800 680 244 or email: [weeds@dpi.nsw.gov.au](mailto:weeds@dpi.nsw.gov.au)
- To report illegal discharge from vessels or erosion caused by boat wake, phone Maritime Info Line: 13 12 56 (8.30am – 4.30pm, 7 days a week) or email: [enquiries@maritime.nsw.gov.au](mailto:enquiries@maritime.nsw.gov.au)

This project is partially funded by the five NSW Coastal Catchment Management Authorities and the Australian Government's Caring for our Country.

Photographs courtesy of NSW Department of Primary Industries or Sydney Metropolitan CMA except where indicated.

*Printed on 55% recycled FSC paper stock, using vegetable oil based inks and an alcohol-free printing process. (ecoDesign ecoPrint FSC Cert no. QMI-COC-001113). Coating is EcoKote film that is oxo-biodegradable and Compostable.*

# Healthy Waterways

## better boating more fish

### HOW BOATERS AND FISHERS CAN HELP



Swing mooring scars



Photo: Californian Coastal Commission



Northern Pacific sea star

Photo: © CSIRO

## Watch Your Habitat

– protect it, don't neglect it

**Fact** Habitat destruction has caused the greatest loss of native biodiversity

### How boaters & fishers can help:

- Where possible anchor away from seagrass beds and rocky reefs
- Keep your propeller clear of seagrass
- Use approved swing moorings and berthing areas. Also consider ecofriendly moorings
- Seek approvals for jetties and foreshore work
- Use established access points to launch and retrieve your boat
- Stow it, don't throw it. Bring all of your litter back to shore for proper disposal, including all pieces of fishing line and gear
- Take charge of your discharge – use approved pump out facilities or shore based toilets where possible
- Reduce bank erosion – continually assess your boat wash. Be wake aware
- Collect pieces of fishing line and other litter that you see in or near the water
- Try using biodegradable fishing line and lures

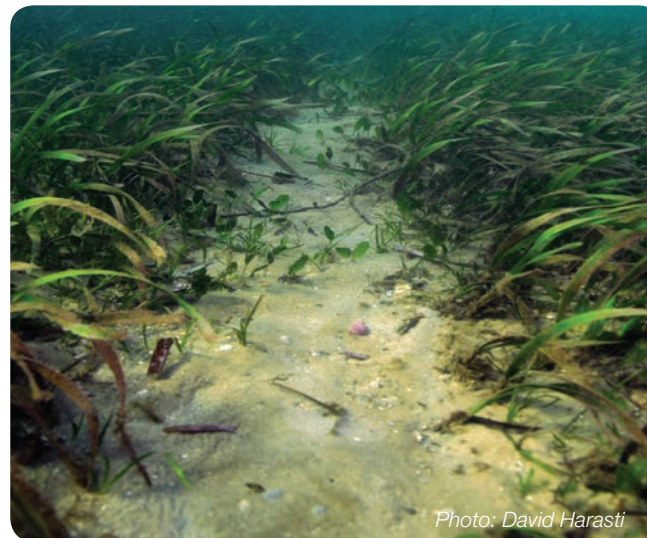


Photo: David Harasti

Propeller scar through seagrass



Illegal mangrove clearing for boat access

## Spread the word

– not the pests

**Fact** Introduced pests – second greatest cause of loss of native biodiversity

### How boaters & fishers can help:

- After each trip, wash down your boat, trailer and gear
- Remove weeds, animals or sediment from your boat, trailer and gear
- Slip and clean your boat regularly
- Clean diving and fishing gear
- Dispose of waste water from cleaning activities appropriately to ensure it doesn't re-enter the waterway

