

**Port Macquarie Coastal Area - Map 5**

**Navigation Aids**

- Standard beacon with red/green
- Master light with Morse
- Light float with triangle
- Light float with square
- Light float with circle
- Light float with diamond
- Light float with cross
- Light float with star
- Light float with inverted triangle
- Light float with inverted square
- Light float with inverted circle
- Light float with inverted diamond
- Light float with inverted cross
- Light float with inverted star

**General Information**

- Port of refuge or shelter
- Gravitic station
- Marine Rescue NSW Base
- Shoal flatness or Artificial Reef

**NOTES:**  
Depth contours are in metres.  
Highs shown in brackets are in metres above mean high water.  
Only datum is the Geocentric Datum of Australia - 1994, which is approximately equivalent to WGS-84.

**Transport Roads & Maritime Services**

**DISCLAIMER!** This map is not intended to be used for navigational purposes and Roads and Maritime Services takes no responsibility for the accuracy of the content herein. Refer to Marine Safety Regulation note Map Printed: November 2016. Copyright Roads and Maritime Services

The Marine Safety Regulation 2016 requires vessels on open water 1e out from the coast, to have an appropriate map or chart on board. This map is deemed to be an appropriate map for recreational vessels undertaking voyages within a 15 nautical mile radius from the point of departure from the coast, (as defined approximately by red dashed lines). Vessels undertaking longer voyages than that stated above MUST carry an appropriate chart (ie an Admiralty or Australian Hydrographic Service chart or E-Chart) showing the area proposed for the voyage or excursion. It is the vessel masters responsibility to ensure that they are in possession of the latest edition of this boating map, chart or E-Chart with the latest corrections.

Note: It is compulsory to carry certain safety equipment including a lifejacket Level 100 plus for all on board, whilst navigating in the open sea. It is also compulsory that lifejackets be worn whilst crossing most entrance bars shown on this map. Further information on what you should carry can be found in the Roads and Maritime Services Boating Handbook available from all RMS Service Centres or by visiting [www.rms.nsw.gov.au](http://www.rms.nsw.gov.au)

**EPIRB**  
Make sure you have a 406MHz beacon.

**F.A.D. Note:** Fish Aggregation Device generally in position during summer months. Phone Fisheries on (02)4424-7400 or visit [www.dpi.nsw.gov.au/fisheries](http://www.dpi.nsw.gov.au/fisheries) for further information on how they work. DO NOT TIE UP TO THE DEVICE.

Offshore Artificial Reef  
S31 25.044 E 152 58.950  
Refer to user guide on [dpi.nsw.gov.au/fisheries](http://dpi.nsw.gov.au/fisheries).

**USEFUL DISTANCE INFORMATION**

Laurieton - Crowdy Head 17nm  
Laurieton - Port Macquarie 17nm  
Port Macquarie - Macleay River 40nm

**DON'T EXPIRE**  
SET A REMINDER FOR THE EXPIRY DATES ON:  
Inflatable Lifejackets  
Flares  
EPIRBs  
[rms.nsw.gov.au/maritime](http://rms.nsw.gov.au/maritime)

**LOOK OUT DIVERS ABOUT**  
Caution: Look out for divers particularly at popular dive sites.

**IN CASE OF AN EMERGENCY**  
Call the nearest Marine Rescue NSW Base on :-  
27 MHz Channels 88 & 86,  
VHF Channels 16, 67 & 73 or  
HF Channels 2182 & 2524 KHz.  
Frequent users are encouraged to join the Marine Radio Safety Service. Details at [marinerescuensw.com.au](http://marinerescuensw.com.au)  
Remember to Log on and Log off. It serves as a useful Radio Check.

**FOR DETAILED INFORMATION SEE CHARTS AUS 219 & 811.**

**WARNING**  
THE WATERS OF THIS BAR ARE DANGEROUS  
NAVIGATE WITH CARE  
WEARING LIFEJACKETS IS COMPULSORY  
PENALTIES APPLY

Note: Shark listening station is being trialled in this area. Keep clear. [www.dpi.nsw.gov.au](http://www.dpi.nsw.gov.au)

**FOR DETAILED INFORMATION SEE CHARTS AUS 219 & 811.**

**WARNING**  
THE WATERS OF THIS BAR ARE DANGEROUS  
NAVIGATE WITH CARE  
WEARING LIFEJACKETS IS COMPULSORY  
PENALTIES APPLY

Note: Shark listening station is being trialled in this area. Keep clear. [www.dpi.nsw.gov.au](http://www.dpi.nsw.gov.au)

**FOR DETAILED INFORMATION SEE CHARTS AUS 219 & 811.**

**WARNING**  
THE WATERS OF THIS BAR ARE DANGEROUS  
NAVIGATE WITH CARE  
WEARING LIFEJACKETS IS COMPULSORY  
PENALTIES APPLY

Note: Shark listening station is being trialled in this area. Keep clear. [www.dpi.nsw.gov.au](http://www.dpi.nsw.gov.au)

**FOR DETAILED INFORMATION SEE CHARTS AUS 219 & 811.**

**WARNING**  
THE WATERS OF THIS BAR ARE DANGEROUS  
NAVIGATE WITH CARE  
WEARING LIFEJACKETS IS COMPULSORY  
PENALTIES APPLY

Note: Shark listening station is being trialled in this area. Keep clear. [www.dpi.nsw.gov.au](http://www.dpi.nsw.gov.au)

**FOR DETAILED INFORMATION SEE CHARTS AUS 219 & 811.**

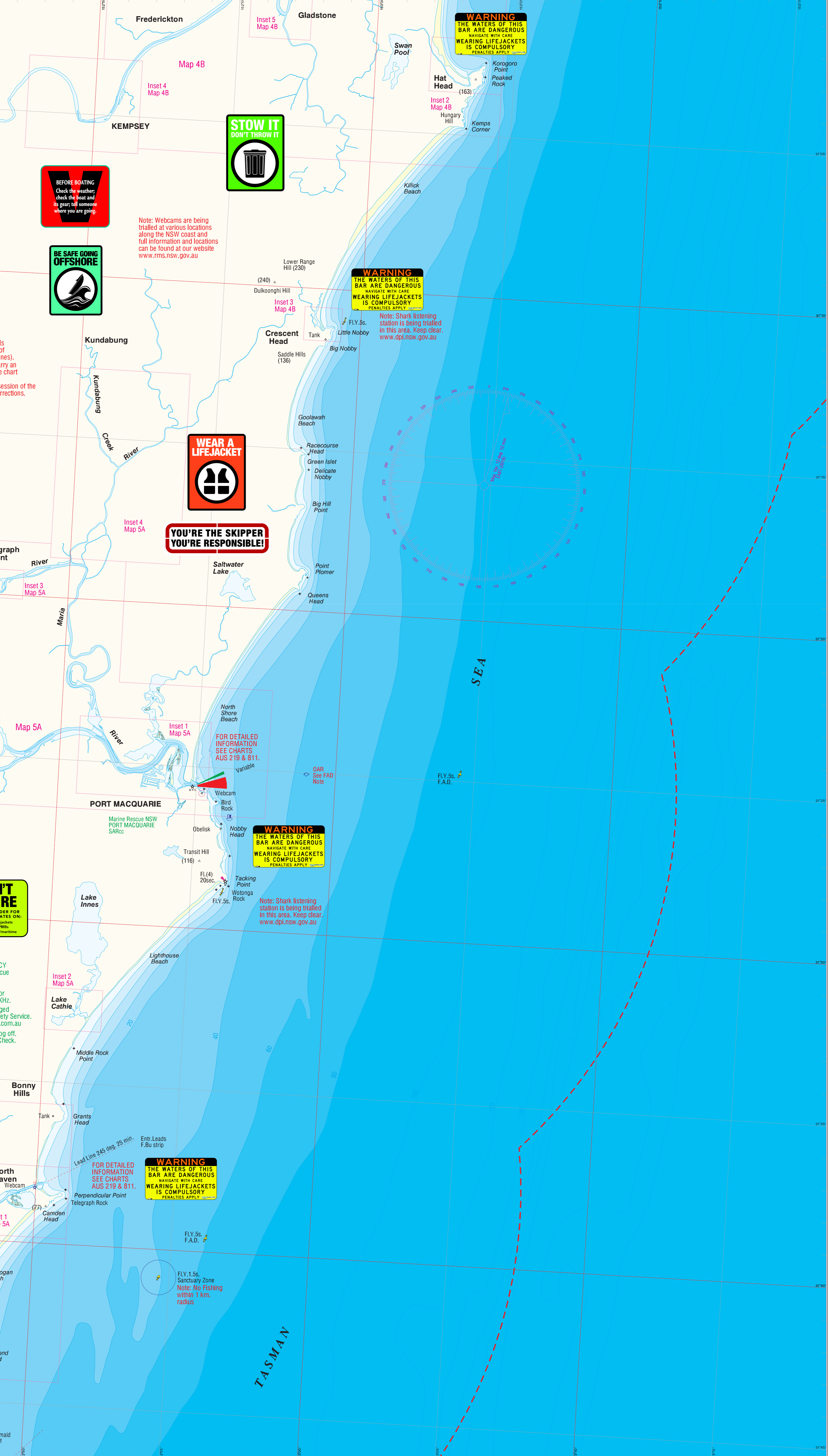
**WARNING**  
THE WATERS OF THIS BAR ARE DANGEROUS  
NAVIGATE WITH CARE  
WEARING LIFEJACKETS IS COMPULSORY  
PENALTIES APPLY

Note: Shark listening station is being trialled in this area. Keep clear. [www.dpi.nsw.gov.au](http://www.dpi.nsw.gov.au)

**FOR DETAILED INFORMATION SEE CHARTS AUS 219 & 811.**

**WARNING**  
THE WATERS OF THIS BAR ARE DANGEROUS  
NAVIGATE WITH CARE  
WEARING LIFEJACKETS IS COMPULSORY  
PENALTIES APPLY

Note: Shark listening station is being trialled in this area. Keep clear. [www.dpi.nsw.gov.au](http://www.dpi.nsw.gov.au)



**BEFORE BOATING**  
Check the weather, check the boat and its gear; tell someone where you are going.

**BE SAFE GOING OFFSHORE**

Note: Webcams are being trialled at various locations along the NSW coast and full information and locations can be found at our website [www.rms.nsw.gov.au](http://www.rms.nsw.gov.au)

**STOW IT**  
DON'T THROW IT

**WEAR A LIFEJACKET**

**YOU'RE THE SKIPPER**  
YOU'RE RESPONSIBLE!

**WARNING**  
THE WATERS OF THIS BAR ARE DANGEROUS  
NAVIGATE WITH CARE  
WEARING LIFEJACKETS IS COMPULSORY  
PENALTIES APPLY

Note: Shark listening station is being trialled in this area. Keep clear. [www.dpi.nsw.gov.au](http://www.dpi.nsw.gov.au)

**WARNING**  
THE WATERS OF THIS BAR ARE DANGEROUS  
NAVIGATE WITH CARE  
WEARING LIFEJACKETS IS COMPULSORY  
PENALTIES APPLY

Note: Shark listening station is being trialled in this area. Keep clear. [www.dpi.nsw.gov.au](http://www.dpi.nsw.gov.au)

**FLY.1.5s. Sanctuary Zone**  
Note: No Fishing within 1 km. radius

**WARNING**  
THE WATERS OF THIS BAR ARE DANGEROUS  
NAVIGATE WITH CARE  
WEARING LIFEJACKETS IS COMPULSORY  
PENALTIES APPLY

**WARNING**  
THE WATERS OF THIS BAR ARE DANGEROUS  
NAVIGATE WITH CARE  
WEARING LIFEJACKETS IS COMPULSORY  
PENALTIES APPLY

Note: Shark listening station is being trialled in this area. Keep clear. [www.dpi.nsw.gov.au](http://www.dpi.nsw.gov.au)

**FOR DETAILED INFORMATION SEE CHARTS AUS 219 & 811.**

**WARNING**  
THE WATERS OF THIS BAR ARE DANGEROUS  
NAVIGATE WITH CARE  
WEARING LIFEJACKETS IS COMPULSORY  
PENALTIES APPLY

Note: Shark listening station is being trialled in this area. Keep clear. [www.dpi.nsw.gov.au](http://www.dpi.nsw.gov.au)

**WARNING**  
THE WATERS OF THIS BAR ARE DANGEROUS  
NAVIGATE WITH CARE  
WEARING LIFEJACKETS IS COMPULSORY  
PENALTIES APPLY

Note: Shark listening station is being trialled in this area. Keep clear. [www.dpi.nsw.gov.au](http://www.dpi.nsw.gov.au)

**WARNING**  
THE WATERS OF THIS BAR ARE DANGEROUS  
NAVIGATE WITH CARE  
WEARING LIFEJACKETS IS COMPULSORY  
PENALTIES APPLY

Note: Shark listening station is being trialled in this area. Keep clear. [www.dpi.nsw.gov.au](http://www.dpi.nsw.gov.au)

**WARNING**  
THE WATERS OF THIS BAR ARE DANGEROUS  
NAVIGATE WITH CARE  
WEARING LIFEJACKETS IS COMPULSORY  
PENALTIES APPLY

Note: Shark listening station is being trialled in this area. Keep clear. [www.dpi.nsw.gov.au](http://www.dpi.nsw.gov.au)

**WARNING**  
THE WATERS OF THIS BAR ARE DANGEROUS  
NAVIGATE WITH CARE  
WEARING LIFEJACKETS IS COMPULSORY  
PENALTIES APPLY

Note: Shark listening station is being trialled in this area. Keep clear. [www.dpi.nsw.gov.au](http://www.dpi.nsw.gov.au)