



Australian Government

BUILDING OUR FUTURE



October 2017

Approval for use and start of work at the Gibsons borrow site and Jali borrow site for Woolgoolga to Ballina Pacific Highway upgrade

The Australian and NSW governments are jointly funding the \$4.36 billion Woolgoolga to Ballina Pacific Highway upgrade. Roads and Maritime Services Pacific Highway Project Office and Pacific Complete are working together to deliver the project.

During April, the Woolgoolga to Ballina Pacific Highway project team asked for feedback on a proposal to work in the quarry known as Gibsons and the Jali owned quarry at Bagotville for the upgrade.

The team received responses from 11 individuals and organisations. The team considered these matters as part of the sites' assessment. A consultation report with the feedback and Roads and Maritime's responses is available at rms.nsw.gov.au/w2b.

Since seeking feedback, the project team has produced management plans for the borrow sites. These plans were submitted to the NSW Department of Planning and Environment for approval.

The project team has recently received advice from the Department that the management plans for the Gibsons borrow site and Jali borrow site have been approved. The management plan for the Lumleys Hill borrow site has also been accepted. More information about that site will be provided separately.

Changed as a result of feedback

The project team appreciates community feedback as part of planning our work. Some changes have been made to the management plans as a result of community comments and the Department's review.

These changes include:

- Reducing expected heavy vehicle movements and monitoring traffic volumes
- Installing additional signage to limit the use of compression (air) brakes
- Reducing construction vehicle speed limits on Old Bagotville Road
- Enhancing traffic management on local roads near quarry sites
- Improving education and training about the local population of the Long-Nosed Potoroo
- Carrying out the predator control program in Wardell Heath until December 2017
- Preparing and submitting Environmental Work Method Statements to the Department t, in consultation with agencies
- Preparing and submitting a Bulk Earthworks Haulage Strategy for local roads to the Department, in consultation with Ballina Shire Council and other agencies.

These changes are in addition to the measures that the project team had already committed to as part of the consultation with community and stakeholders.

Start of work

The project team will start operating the two existing quarries known as Gibsons and Jali borrow sites from mid-October, weather permitting.

The team will use heavy machinery including 120 tonne excavators and 50 tonne trucks to remove more than 300,000 cubic metres of rock and earth material from the borrow sites. This material will be used within the project alignment to build the new road.

Extracted material will be crushed and screened then sorted into short term stockpiles. The material will be stockpiled on site so the project team can mitigate dust. It will be loaded into trucks and transported to areas within the project alignment.

How will dust and noise be managed?

During this work, impacts including noise, dust and vibration will occur. The project team will use proven environmental management and mitigation methods to minimise these impacts during our work. Some of the measures we use to minimise dust and noise include:

- Spraying water for dust suppression
- Applying dust binding agents to cover stock piles and mounds during construction
- Only carry out blasting from Mondays to Fridays between 9am and 5pm and on Saturdays from 9am to 1pm. We will not carry out blasting on Sundays or public holidays
- Monitoring air quality and noise
- Positioning noise generating plant and equipment away from residential properties, where practicable
- Service and maintain plant and equipment so they are in good working order
- Minimising the number of plant and equipment operating at the same time
- Use natural features and site structures to help mitigate noise.

All borrow site operations will be carried out in line with the project's Conditions of Approval and Construction Environment Management Plan. A separate notification about the Lumleys Hill borrow site consultation outcome and start of work is available from rms.nsw.gov.au/W2B.

How will work affect you?

During this work nearby residents and road users can expect:

- Increased noise levels due to the use of heavy machinery and excavation equipment
- Increased traffic on local roads including construction vehicles, heavy machinery and trucks
- Low levels of vibration during excavation, and drill and blast activities
- Some dust due to the nature of excavating
- Flashing lights and reversing alarms on machinery and vehicles will be used for the safety of workers
- Temporary lighting towers for compounds and borrow sites
- Temporary changes to road conditions including reduced speed limits, short term stoppages and traffic management along roads.

Blasting

The project team will use drilling and blasting to break up hard rock when other excavation methods are not feasible. Blasting involves drilling a series of holes in a predetermined pattern in a section of hard rock, then loading the holes with appropriately sized explosives and detonating to break the hard rock ready for excavation, crushing, screening, stockpiling and transporting.

Directly affected residents within 200 metres of the work areas will be informed before any blasting is carried out.

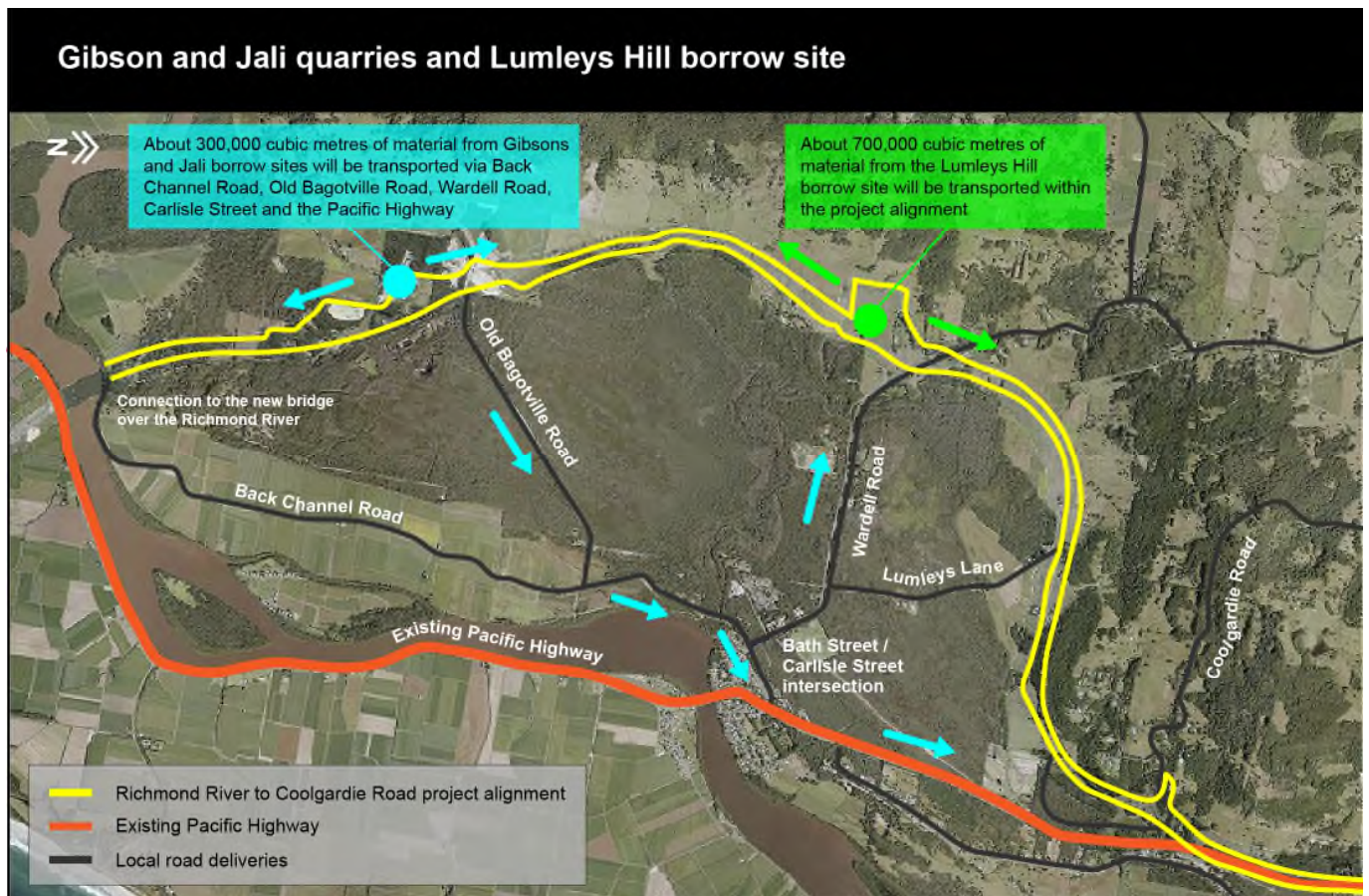
Blasting will be completed in accordance with the project's Conditions of Approval and Construction Environment Management Plan.

Motorists can expect traffic delays of five minutes on Old Bagotville Road during blasting as there will be restricted access around the work site. Traffic management advanced signage will be used for the safety of workers and the community. We appreciate your patience during this important work and ask that directions given by traffic controllers are obeyed to ensure the safety of residents, road users and workers.

Construction traffic and heavy vehicle movements

We have provided a map to show the initial haulage routes for the start of work through until early 2018. These routes are approved as part of the project's Bulk Haulage Strategy for local roads for this stage of work. The project team will keep you informed about future changes to the volume of heavy vehicle movements and routes as work continues. The map shows movements from Gibsons and Jali borrow sites as well as Lumley Hill borrow site. The majority of the materials for building the new road will be moved directly into the alignment from both borrow sites.

To limit the need for heavy vehicles to use local roads we will be building a haulage road within the project area. The haulage road will take about four months to build, weather permitting. During this time, 250 heavy vehicle movements and up to 100 light vehicle movements per working day are expected along Old Bagotville Road, Back Channel Road, Wardell Road and Carlisle Street (averaged over each month).



After the haulage road is built, the majority of heavy vehicle movements will use it for transporting material. At times, due to construction constraints within the project area, heavy vehicles may continue to use the local road network.



250 truck movements per day (averaged per month)



100 car movements per day during peak periods

How is traffic managed?

To manage the increase in vehicle movements in the area for the project, we will wherever possible:

- Use the construction corridor haul road for heavy vehicle movements
- Reduce the speed limit to 70 kilometres/hour on Old Bagotville Road at site access points while we are using the borrow sites
- Maintain the condition of Old Bagotville Road, Back Channel Road, Wardell Road and Carlisle Street for the duration of the project construction
- All project vehicles will be monitored through In Vehicle Monitoring Systems (IVMS) to ensure professional driver behaviour standards are being met
- Additional signage and construction vehicle speed limits will also be in place.

Koala management measures

Koala food trees will not be cleared in either of the borrow site locations. As part of the project's conditions of approval, we will implement measures outlined in the Koala Management Plan, including:

- Installing temporary fencing around the borrow sites
- Introducing temporary reduced speed limits on local roads
- Inducting and training workers in koala awareness and management
- Having an ecologist with suitable experience in koala handling on site during pre-clearing surveys, clearing activities and throughout the work.

Work hours



7am – 6pm Monday – Friday
8am – 5pm Saturdays

Typically work will be carried out during the project's approved construction hours, which are between 7am and 6pm from Monday to Friday and between 8am and 5pm on Saturday.

In areas where residents live more than 200 metres from the project boundary, extended work hours from 6am to 7pm weekdays may be permitted. We will notify nearby residents at least five working days in advance of any activities scheduled outside of these working hours.

For more information about the project, please contact us on 1800 778 900, email W2B@pacificcomplete.com.au or visit the project website at rms.nsw.gov.au/W2B.

We apologise for any inconvenience and thank you for your patience during this important work.



131 450

If you need help understanding this information, please contact the Translating and Interpreting Service on 131 450 and ask them to call us on 1800 778 900.