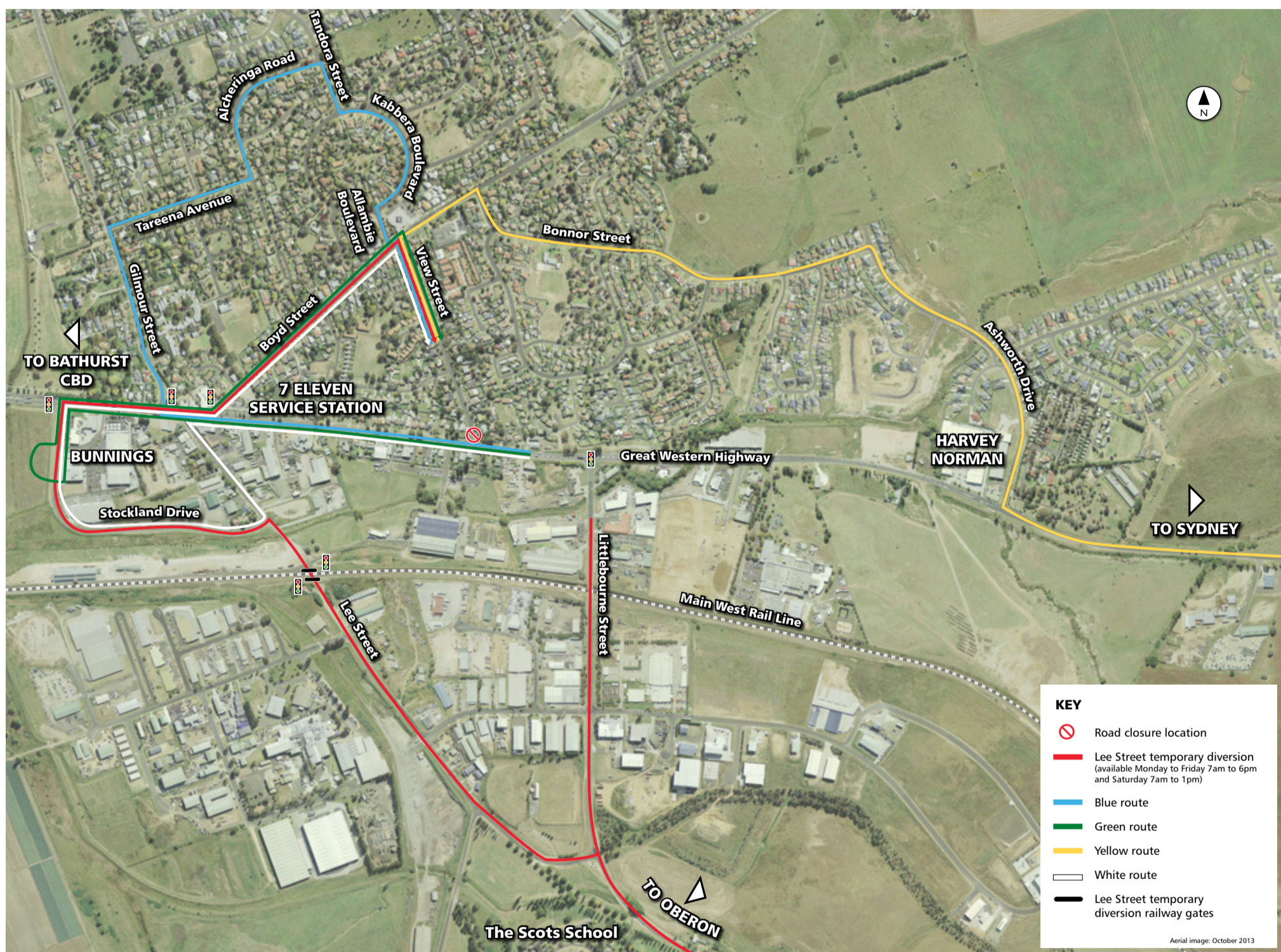


View Street Closure Map



Yellow route: Westbound traffic use Ashworth Drive, Bonner Street, and Boyd Street to reach View Street or continue to further destination.

Red route (*Temporary Lee Street diversion, Monday to Friday 7am to 6pm and Saturday 7am to 1pm only*): Westbound traffic from the highway, Littlebourne Street and O'Connell Road use Lee Street, Stockland Drive and Boyd Street to reach View Street or continue towards Limekilns.

White route: Westbound traffic use Lee Street, Stockland Drive and Boyd Street to reach View Street or continue towards Limekilns.

Green route: Westbound traffic use the u-turn bay in Stockland Drive, Great Western Highway and Boyd Street to reach View Street or continue towards Limekilns.

Blue route: Westbound traffic use Gilmour Street, Tareena Avenue, Alcheringa Road, Tandora Street, Kabbera Boulevard, Allambie Boulevard and Boyd Street to reach View Street or continue towards Limekilns.