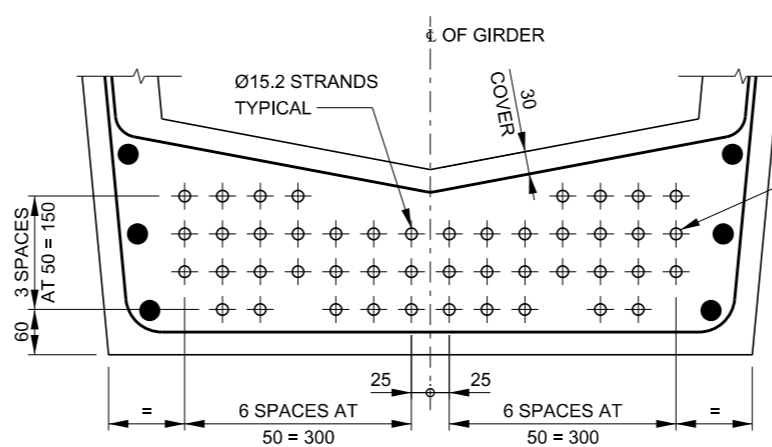
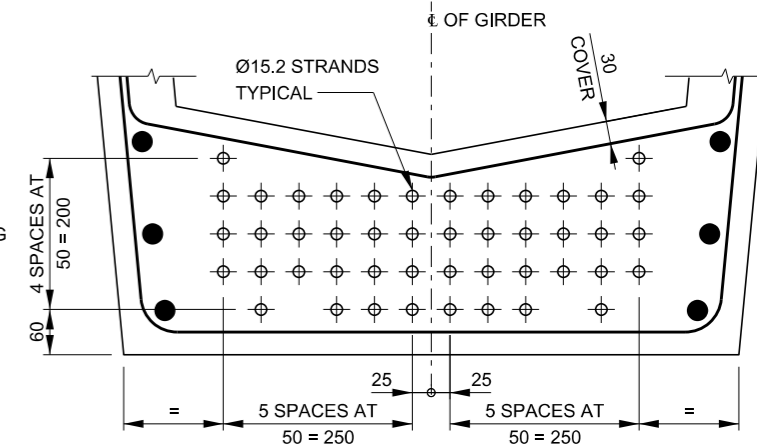


BOTTOM STRAND PATTERN
GIRDER TYPE T1

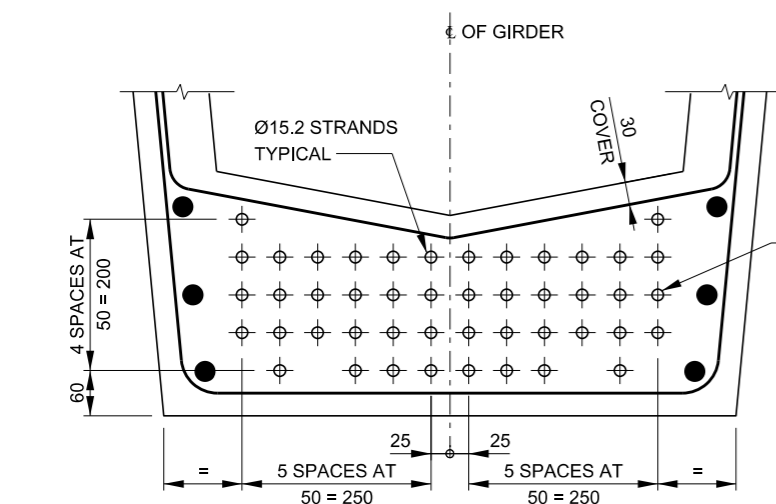


BOTTOM STRAND PATTERN
GIRDER TYPE T2



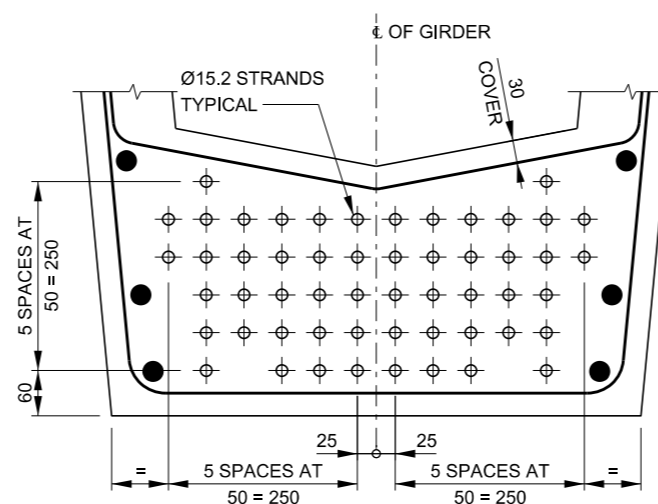
BOTTOM STRAND PATTERN
GIRDER TYPE T3

THIS STRANDS SHALL BE OMITTED WHERE ADJACENT REINFORCING BARS ARE GREATER THAN Ø24 - TYPICAL

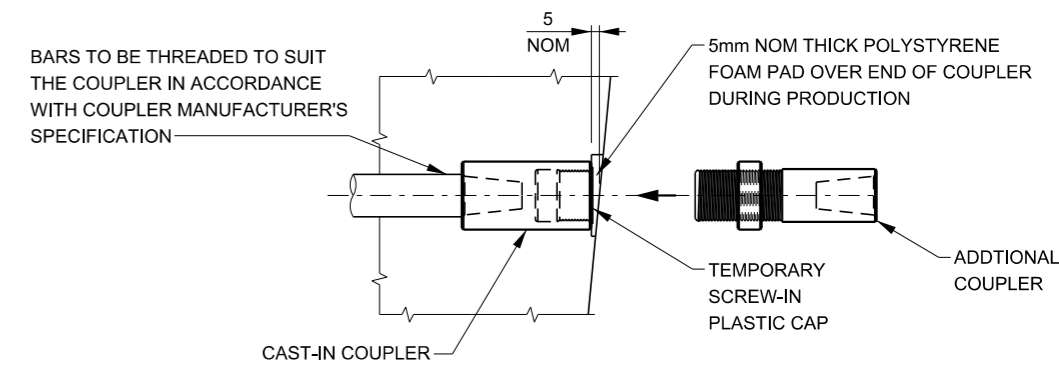


BOTTOM STRAND PATTERN
GIRDER TYPE T4

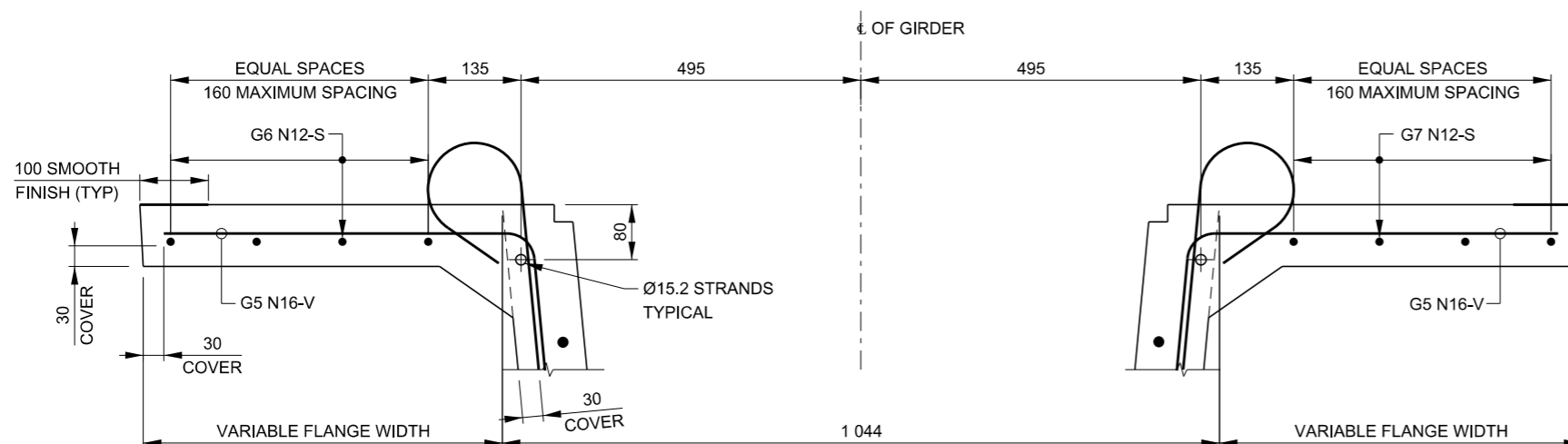
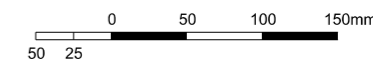
THIS STRANDS SHALL BE OMITTED WHERE ADJACENT REINFORCING BARS ARE GREATER THAN Ø24 - TYPICAL



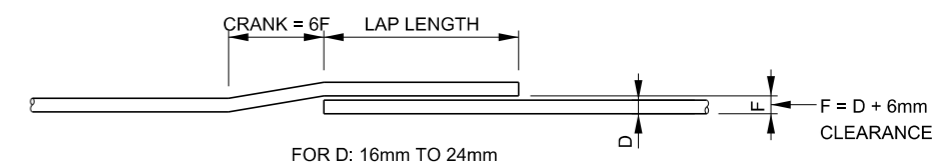
BOTTOM STRAND PATTERN
GIRDER TYPE T5



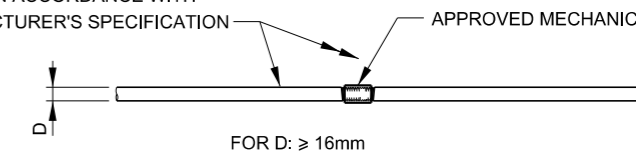
FULL ENGAGEMENT MECHANICAL POSITION COUPLER
FOR CROSS GIRDER BARS



TOP FLANGE REINFORCEMENT DETAILS AND
STRAND PATTERN - ALL GIRDER TYPES



BARS SHALL BE THREADED TO SUIT SIZE OF COUPLER IN ACCORDANCE WITH COUPLER MANUFACTURER'S SPECIFICATION



BOTTOM FLANGE REINFORCING BAR SPLICE DETAIL (G2)
NOT TO SCALE

GENERAL NOTES

SCALE 0 100 200 300mm OR AS SHOWN.

STRANDS SHALL BE 7-WIRE, ORDINARY, DIAMETER 15.2mm, TENSILE STRENGTH 1 750 MPa, RELAX 2, TO AS/NZS 4672.1 WITH MINIMUM BREAKING FORCE OF 250 kN.
FOR OTHER GENERAL NOTES RELATING TO THIS DRAWING, SEE DRAWING No B0202.

APPROVED FOR USE <i>W. Ariyaratne</i> DIRECTOR BRIDGES AND STRUCTURES 21.12.2018 DATE	Transport Roads & Maritime Services SEND FEEDBACK ON THIS STANDARD DRAWING TO: standardbridgedrawings@rms.nsw.gov.au EDMS No DS2017/002807	STANDARD DRAWING SUPER T GIRDER STRAND AND REINFORCEMENT DETAILS SHEET B	STATUS ISSUED ISSUE DATE DEC 2018 REVISION ISSUE 1 STANDARD DRAWING No B0203
---	---	---	---