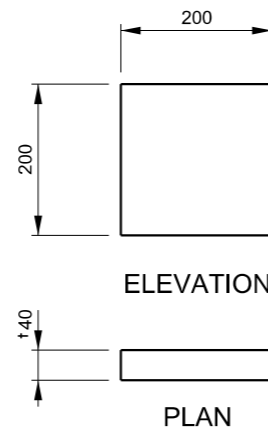
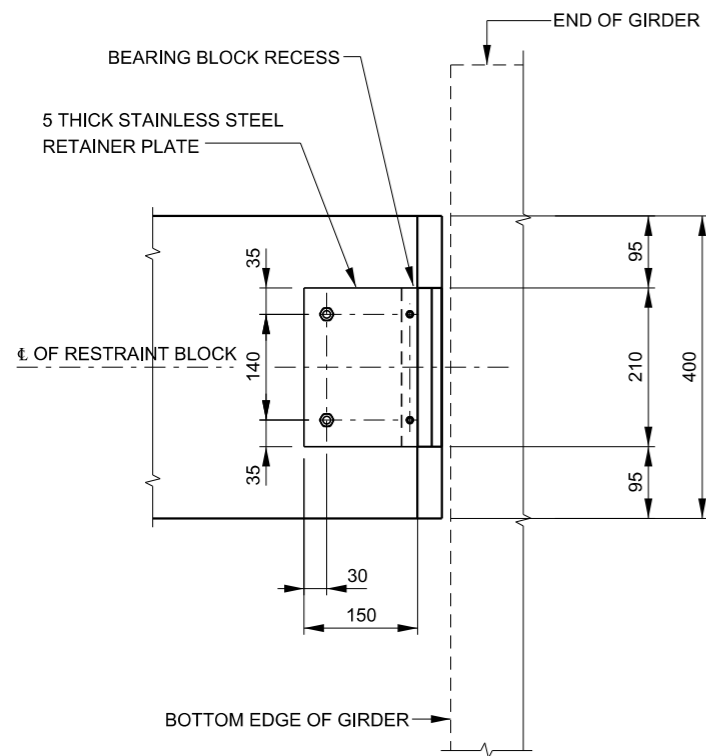


**ELEVATION OF LATERAL RESTRAINT BLOCK**

LATERAL RESTRAINT BLOCKS SHALL BE CAST AFTER GIRDERS HAVE BEEN ERECTED, ALIGNED AND FIXED IN THEIR FINAL POSITION

\* DENOTES NOMINAL DIMENSION WHICH MAY BE ADJUSTED TO SUIT GIRDER TYPE AND BEARING HEIGHT USED

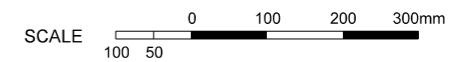
† DENOTES THE GAP BETWEEN THE GIRDER AND THE RECESS SHALL BE MEASURED ON SITE AND THE BEARING BLOCK THICKNESS SHALL BE SHAPED TO MAINTAIN A 10mm UNIFORM GAP BETWEEN THE BEARING BLOCK AND THE GIRDER



**BEARING BLOCK**

BEARING BLOCK MAY BE MANUFACTURED FROM HDPE, NYLON OR OTHER SUITABLE LOW FRICTION MATERIAL

**GENERAL NOTES**



STAINLESS STEEL RETAINER PLATE GRADE 316 TO ASTM A240M.  
 FASTENERS SHALL CONFORM TO THE REQUIREMENTS OF ROADS AND MARITIME SERVICE QA SPECIFICATION B240.  
 FASTENERS SHALL CONFORM GRADE 316 (A4) TO ISO 3506.



ABUTMENT APPLICATION SHOWN  
 BEARING BLOCK NOT SHOWN

APPROVED FOR USE	 <b>Transport Roads &amp; Maritime Services</b>	STANDARD DRAWING	STATUS
 DIRECTOR BRIDGES AND STRUCTURES		<b>SUPER T GIRDER          LATERAL RESTRAINT</b>	ISSUED
SEND FEEDBACK ON THIS STANDARD DRAWING TO: standardbridgedrawings@rms.nsw.gov.au	EDMS No DS2017/002820		ISSUE DATE DEC 2018
21.12.2018 DATE	A1	STANDARD DRAWING No <b>B0216</b>	© COPYRIGHT ROADS AND MARITIME SERVICES 2018