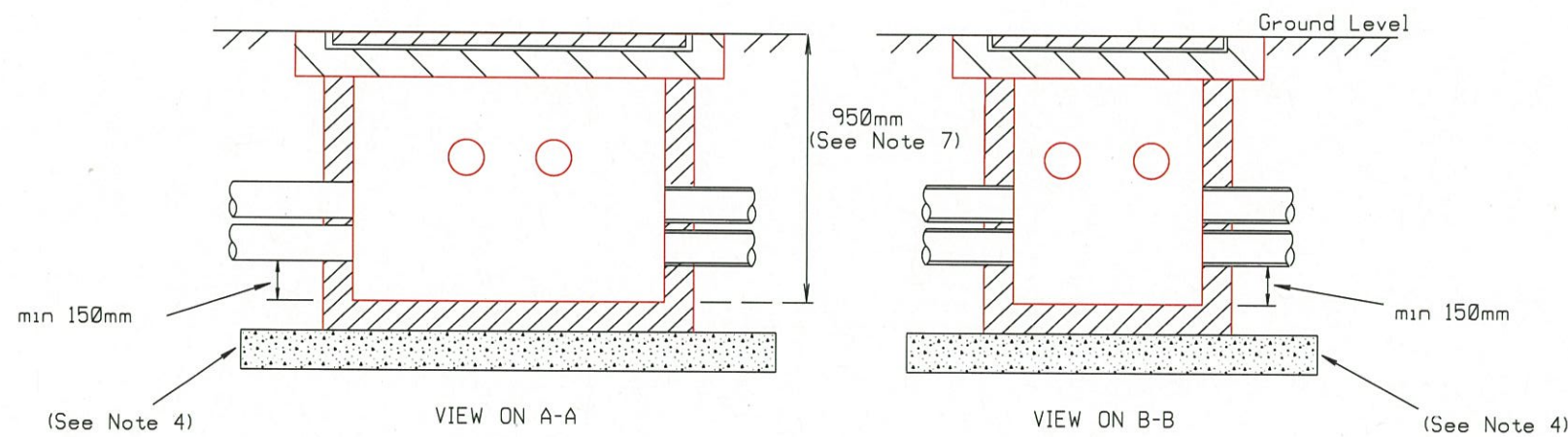


PLAN VIEW



FRONT VIEW

NOTES:

1. 1.0m to 3.0m typical.
2. 4 x White class HD of rigid PVC for communication cables, 100mm dia or as specified.
3. 4 x Orange class HD of rigid PVC for electrical cables, 100mm dia or as specified.
4. Provide bedding for each pit as per clause 4.9.1 in RMS specification R155.
5. All conduits shall enter through the pit wall at preformed conduit entries.
6. Provide conduits as per clause 2.3.2 in RMS specification R155.
7. Typical pit depth 950mm
8. The clear distance between the pit and kerb line must comply with clause 2.4.3 in RMS specification R155.

A ORIGINAL ISSUE

REFERENCE DRAWINGS

ROADS AND MARITIME SERVICES

GENERAL ARRANGEMENT OF
COMMUNICATIONS AND ELECTRICAL PITS
FOR OFFSET INSTALLATION

SCALE

SUPERSEDES:	I
DRAWN	V. Nguyen
CHECKED	<i>[Signature]</i>
PASSED	V. Nguyen Project Manager ITS Projects

APPROVED:

[Signature]

ISSUE

A					
---	--	--	--	--	--

DS2012/000838