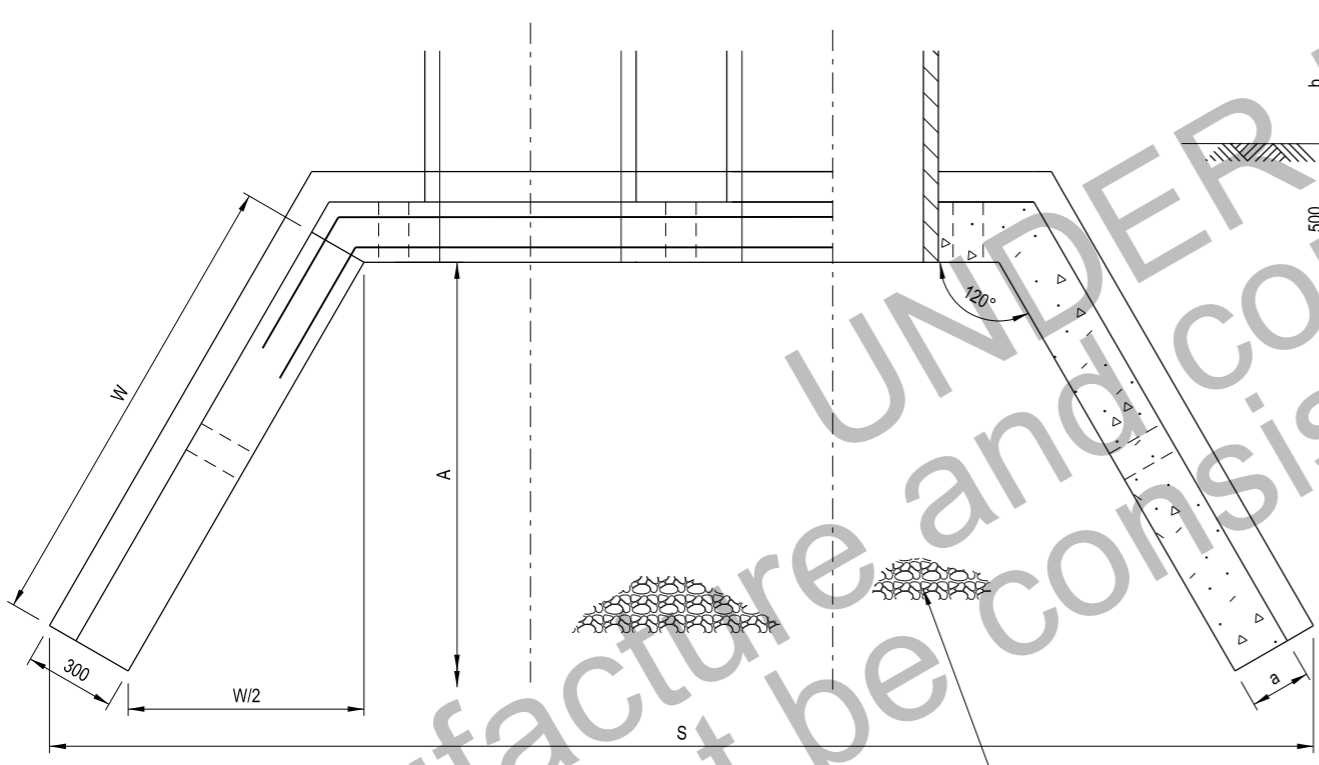
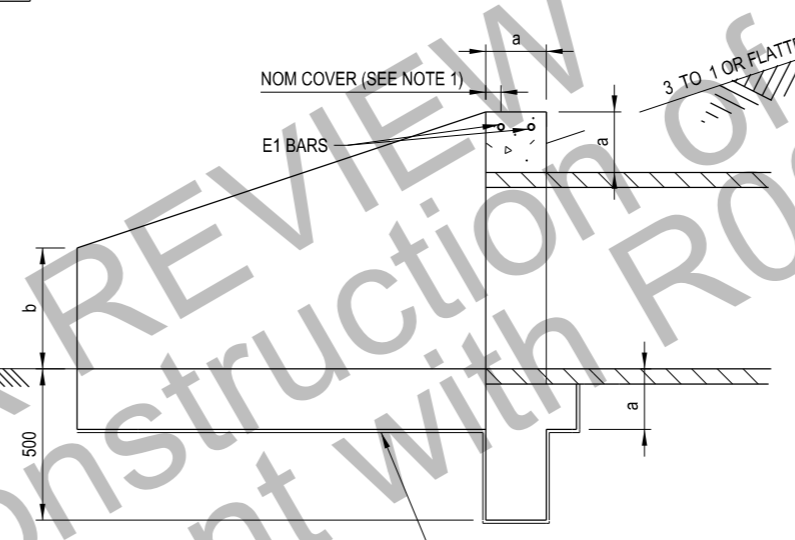


ELEVATION



PLAN

SECTION 1
NOT TO SCALE



SECTION 2
NOT TO SCALE

INLET PROTECTION 170 mm THICK ROCK MATTRESS
 OUTLET PROTECTION 230 mm THICK ROCK MATTRESS
 UNDERSIDE AND ENDS LINED WITH GEOTEXTILE

DIMENSIONS	NOMINAL PIPE DIAMETER (mm)								
	300	375	450	525	600	750	900		
A	2 000	2 000	2 000	2 000	3 000	3 000	4 000		
A	2 000	2 000	2 000	4 000	4 000	4 000	5 000		
C	1 440	1 600	1 780	1 940	2 100	2 440	2 800		
S	2 450	2 850	3 350	3 750	4 200	5 100	6 000		
W	470	730	1 020	1 280	1 560	2 110	2 680		
a	150	150	150	150	150	150	150		
b	300	300	300	300	400	400	400		
QUANTITIES IN 2 HEADWALLS	E1 BAR Ø12 mm	L1 (mm)	1 555	1 715	1 895	2 055	2 215	2 555	2 915
		L2 (mm)	200	200	200	200	600	600	600
		No. REQ (mm)	4	4	4	4	4	4	4
		LENGTH (mm)	7 820	8 460	9 180	9 820	13 660	15 020	16 460
	STEEL REINFORCEMENT (kg)	6.9	7.5	8.2	8.7	12.1	13.3	14.6	
	CONCRETE N25 (SEE NOTE 1) (m ³)	0.70	0.90	1.13	1.36	1.65	2.20	2.84	

NOTES

1. CONCRETE STRENGTH GRADES SHOWN ARE FOR EXPOSURE CLASSIFICATION A2. REFER TO AS3600-2009, SECTION 4 FOR CONCRETE STRENGTH GRADE, COVER TO REINFORCEMENT AND FOR OTHER EXPOSURE CLASSIFICATIONS.
2. WEEPHOLES ARE TO BE PROVIDED AT 1800 CENTRES (MAXIMUM) AT OUTLET ONLY.
3. ALL STEEL BARS TO BE GRADE 400Y TO AS4671-2001.
4. SPACING FOR MULTIPLE PIPES AS SPECIFIED IN R0240-01.

REFERENCED DOCUMENTS:

- AS4671-2001 STEEL REINFORCING MATERIALS
- AS3600-2009 CONCRETE STRUCTURES
- SPECIFICATION R11 - STORMWATER DRAINAGE

THIS DRAWING MAY BE PREPARED IN COLOUR AND MAY BE INCOMPLETE IF COPIED

50mm ON A3 SIZE ORIGINAL

QR CODE				SCAN TO CHECK DOCUMENT VER.				ALL DIMENSIONS ARE IN MILLIMETRES UNLESS OTHERWISE SHOWN				ISSUED				STANDARD DRAWING			
1				9/10/17				SFR				SFR				ROAD DESIGN ENGINEERING			
Added Watermark								SEND FEEDBACK ON THIS STANDARD DRAWING TO : technologystandards@rms.nsw.gov.au				MANAGER ROAD POLICY, SPECIFICATIONS & TECHNOLOGY				R0210 STORMWATER DRAINAGE SERIES - HEADWALLS			
								DATE 20.01.17				CONCRETE HEADWALLS DOUBLE CELL Ø300 mm TO Ø900 mm							
												WITH ROCK MATTRESS PROTECTION (3 TO 1 BATTER OR FLATTER) SHEET 1 OF 1							
												STANDARD DRAWING No. R0210-18							
												STATUS ISSUED							
												EDMS No. DS2014/005807							
												ORIGINAL ISSUE DATE JANUARY 2017							