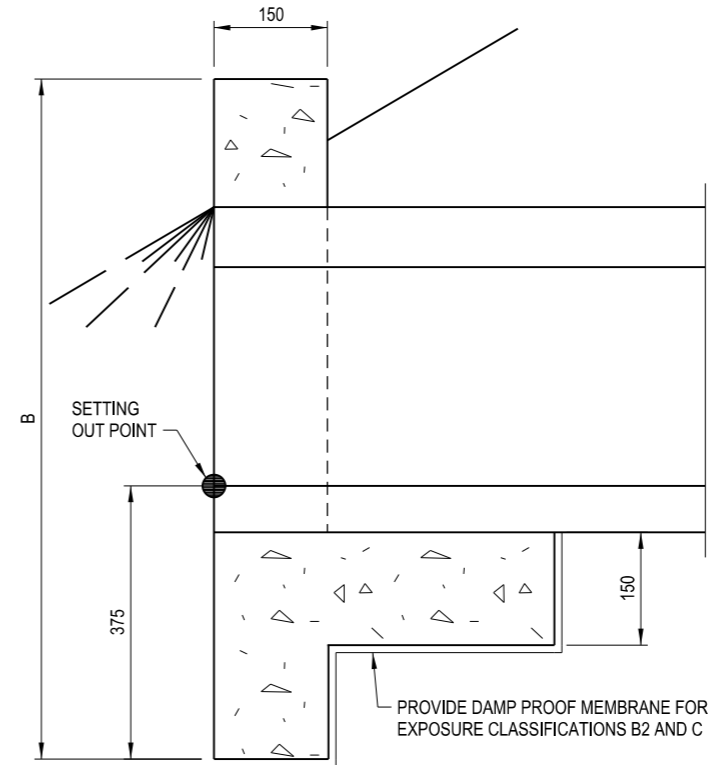
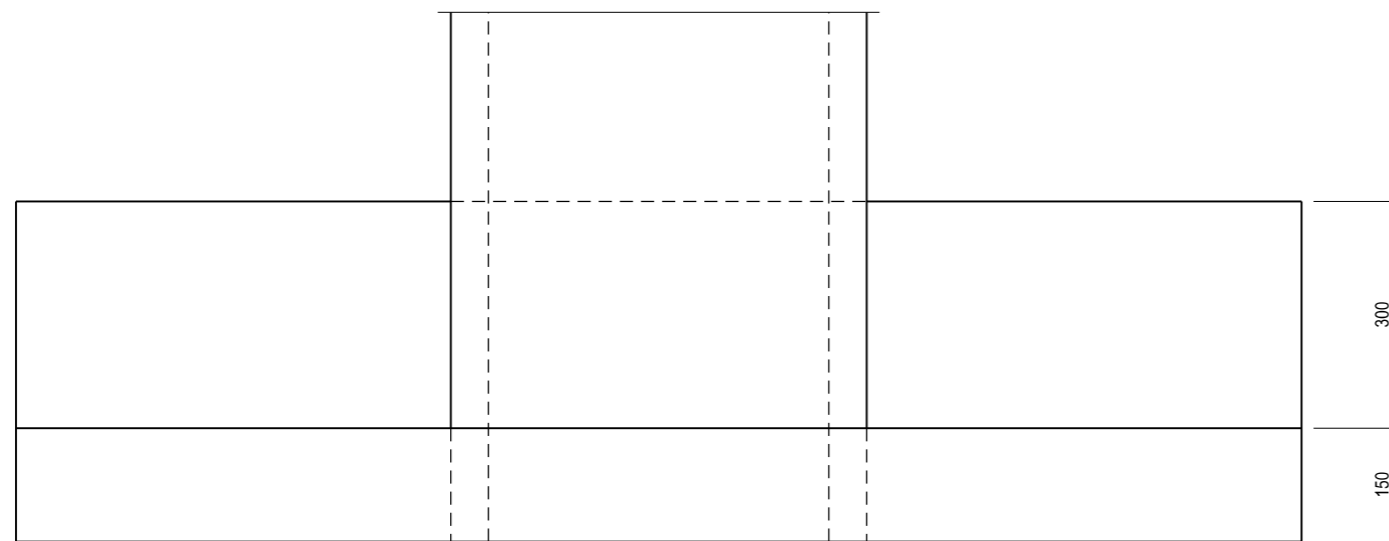


SETTING OUT POINT  
ELEVATION



SECTION 1  
NOT TO SCALE



PLAN

NOMINAL SIZE mm		DIMENSIONS mm		CONCRETE m <sup>3</sup> PER HEADWALL
C1	C2	A	B	
300	225	1 310	820	0.22
375	225	1 385	820	0.23
375	300	1 625	900	0.29
450	225	1 460	820	0.24
450	300	1 700	900	0.31
600	300	2 320	900	0.36

NOTES

1. CONCRETE STRENGTH GRADES SHOWN ARE FOR EXPOSURE CLASSIFICATION A2. REFER TO AS3600-2009, SECTION 4 FOR CONCRETE STRENGTH GRADE, COVER TO REINFORCEMENT AND FOR OTHER EXPOSURE CLASSIFICATIONS.
2. CONCRETE STRENGTH GRADE N25.
3. EXPOSED SURFACES TO BE 25 mm CHAMFER.

THIS DRAWING MAY BE PREPARED IN COLOUR AND MAY BE INCOMPLETE IF COPIED

50mm ON A3 SIZE ORIGINAL

0 5 10 15 20 25 30 35 40 45

ALL DIMENSIONS ARE IN MILLIMETRES UNLESS OTHERWISE SHOWN		ISSUED		<b>Transport Roads &amp; Maritime Services</b>	<b>STANDARD DRAWING</b> ROAD DESIGN ENGINEERING R0210 STORMWATER DRAINAGE SERIES - HEADWALLS HEADWALL FOR BOX CULVERT UP TO 600 x 300 SHEET 1 OF 1															
QR CODE	SCAN TO CHECK DOCUMENT VER.	REV	DATE			AMENDMENT / REVISION DESCRIPTION	WVR No.	APPROVAL	SCALES ON A3 SIZE DRAWING	CONTACT DETAILS	SFR	MANAGER ROAD POLICY, SPECIFICATIONS & TECHNOLOGY	DATE	20.01.17	PREPARED BY	ENGINEERING SERVICES	ROAD POLICY, SPECIFICATIONS AND TECHNOLOGY	STANDARD DRAWING No.	R0210-26	REV.
								SEND FEEDBACK ON THIS STANDARD DRAWING TO : <a href="mailto:technologystandards@rms.nsw.gov.au">technologystandards@rms.nsw.gov.au</a>										STATUS ISSUED	EDMS No. DS2014/005818	ORIGINAL ISSUE DATE JANUARY 2017