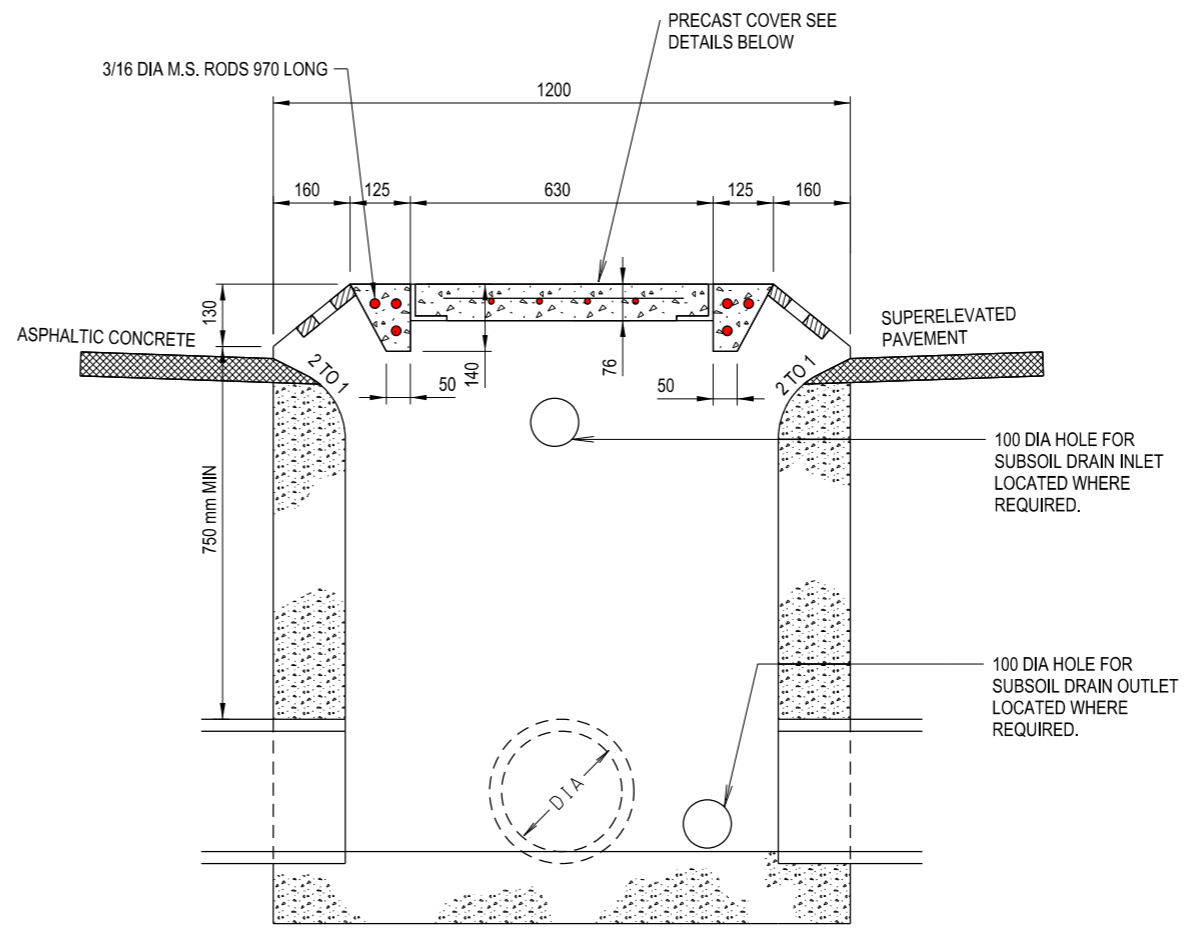
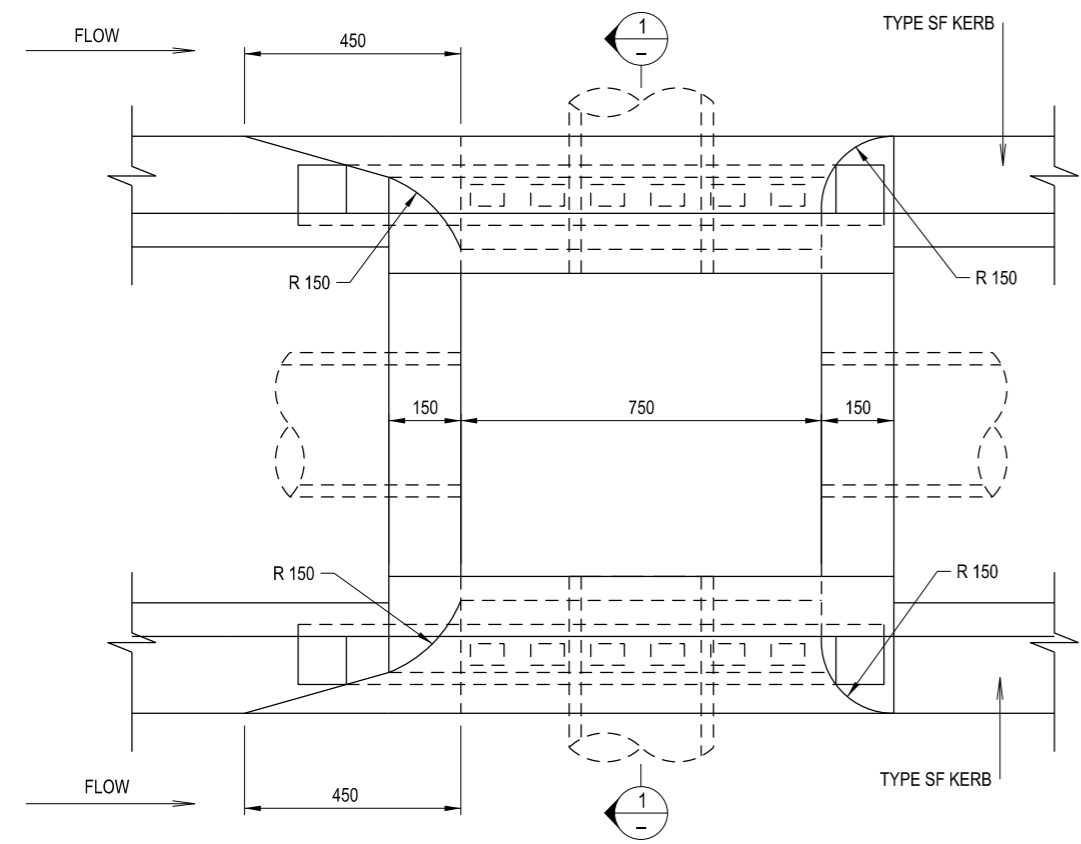


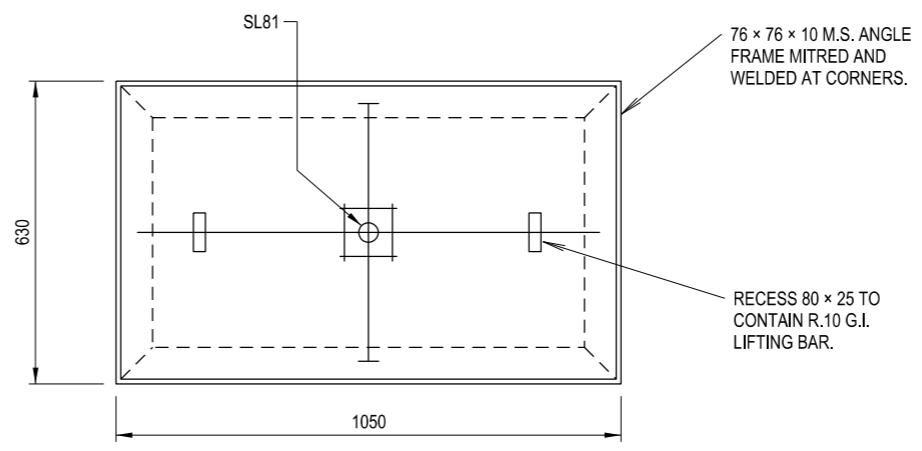
ELEVATION OF INLET



SECTION 1
NOT TO SCALE



PLAN WITH COVER AND GRILLE REMOVED



PLAN OF PIT COVER

NOTES

1. CONCRETE GRADE N25.
2. ALL EXPOSED EDGES TO BE ROUNDED WITH 20 mm RADIUS.
3. ALL MILD STEEL MATERIAL TO BE GALVANISED ON COMPLETION.
4. SIDE WALLS OF ALL PITS DEEPER THAN 1 500 ARE TO BE REINFORCED WITH ONE LAYER OF SL82 MESH RETURNED 300 INTO BASE.
5. DEPTH NOT TO EXCEED 3 500.
6. PITS DEEPER THAN 1 200 TO BE FITTED WITH GALVANISED STEP IRONS.

THIS DRAWING MAY BE PREPARED IN COLOUR AND MAY BE INCOMPLETE IF COPIED

QR CODE		SCAN TO CHECK DOCUMENT VER.		REV	DATE	AMENDMENT / REVISION DESCRIPTION	WVR No.	APPROVAL	ALL DIMENSIONS ARE IN MILLIMETRES UNLESS OTHERWISE SHOWN		ISSUED	Transport Roads & Maritime Services	STANDARD DRAWING ROAD DESIGN ENGINEERING R0220 STORMWATER DRAINAGE SERIES - GULLY PITS STANDARD GULLY PIT TYPE SF2 FOR TYPE SF KERB DOUBLE INLET SHEET 1 OF 1	A3 REV. - ORIGINAL ISSUE DATE JANUARY 2017
									SCALES ON A3 SIZE DRAWING CONTACT DETAILS SEND FEEDBACK ON THIS STANDARD DRAWING TO : technologystandards@rms.nsw.gov.au DATE 20.01.17	SFR MANAGER ROAD POLICY, SPECIFICATIONS & TECHNOLOGY PREPARED BY ENGINEERING SERVICES ROAD POLICY, SPECIFICATIONS AND AND TECHNOLOGY	STANDARD DRAWING No. R0220-10			