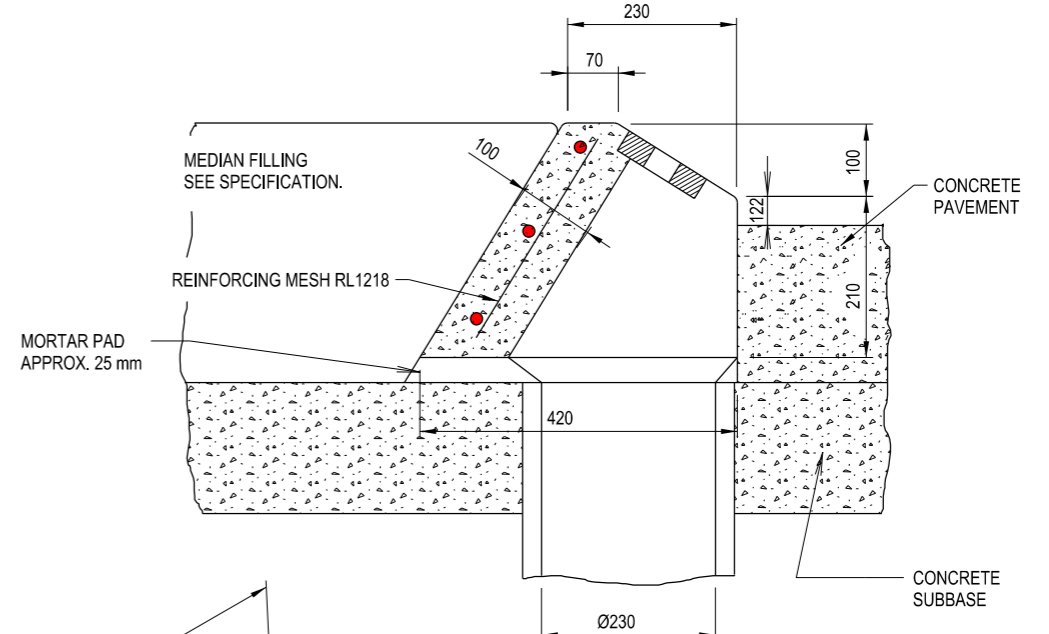
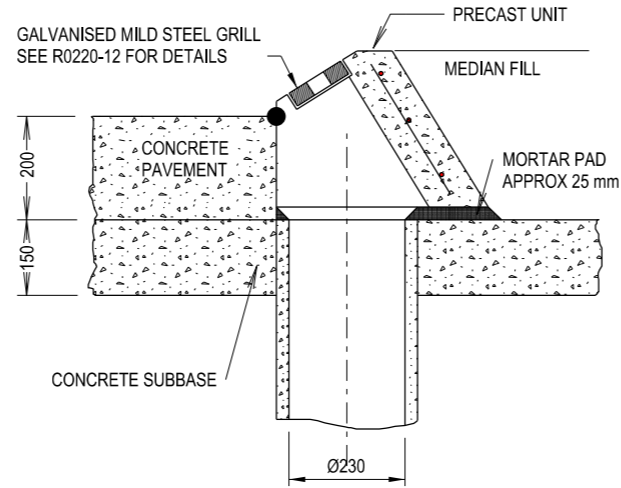
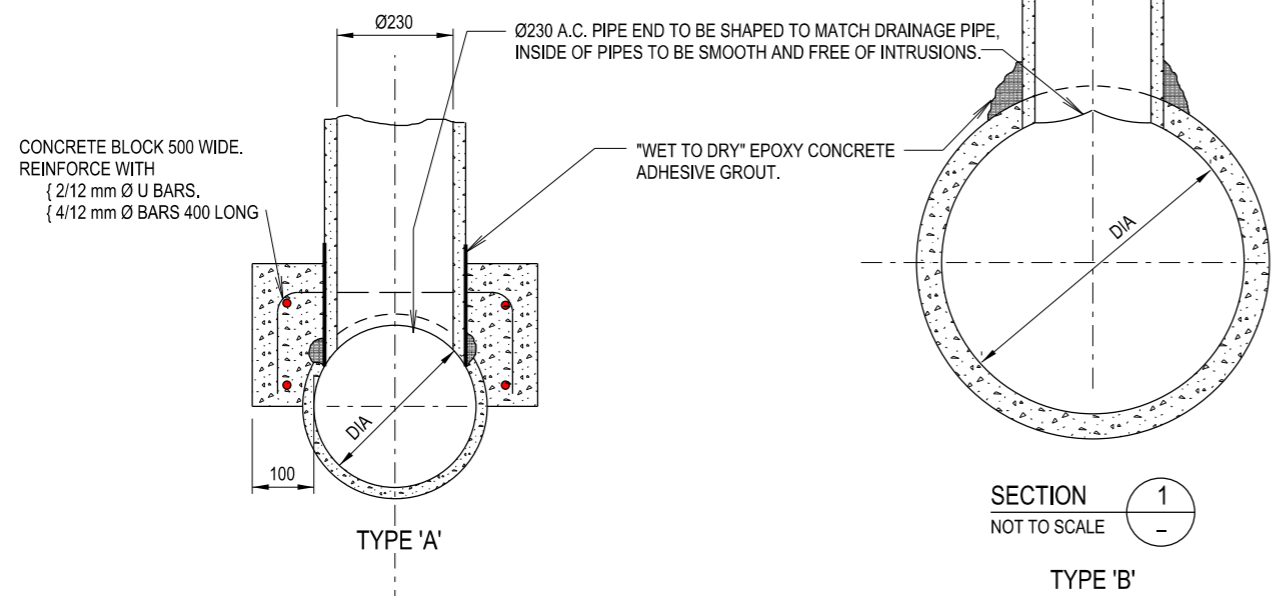


PRECAST MEDIAN KERB INLET FOR SF KERB



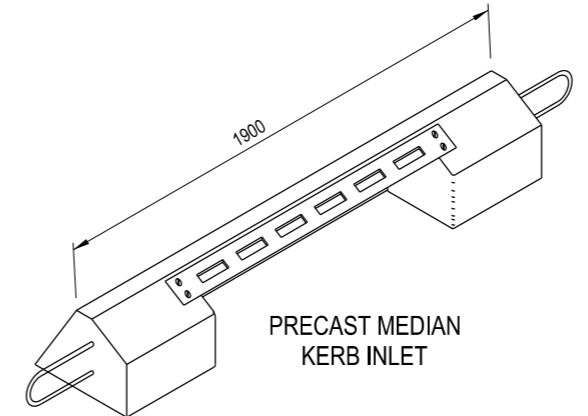
SECTION 3
NOT TO SCALE

FOR TEMPORARY LID DETAIL
SEE DRAWING R0220-42

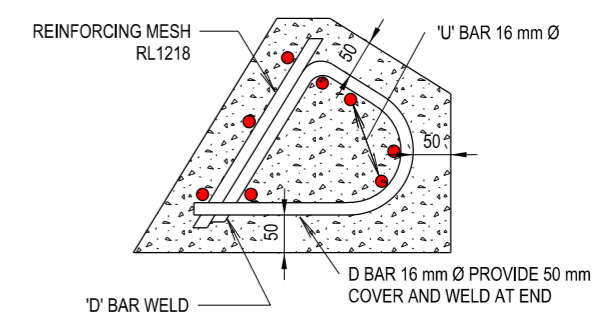


SECTION 1
NOT TO SCALE

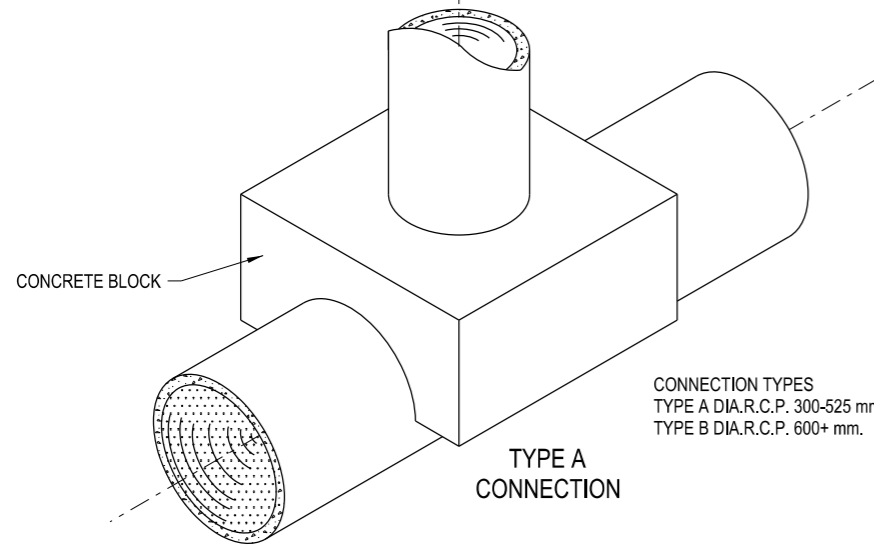
SECTION 2
NOT TO SCALE



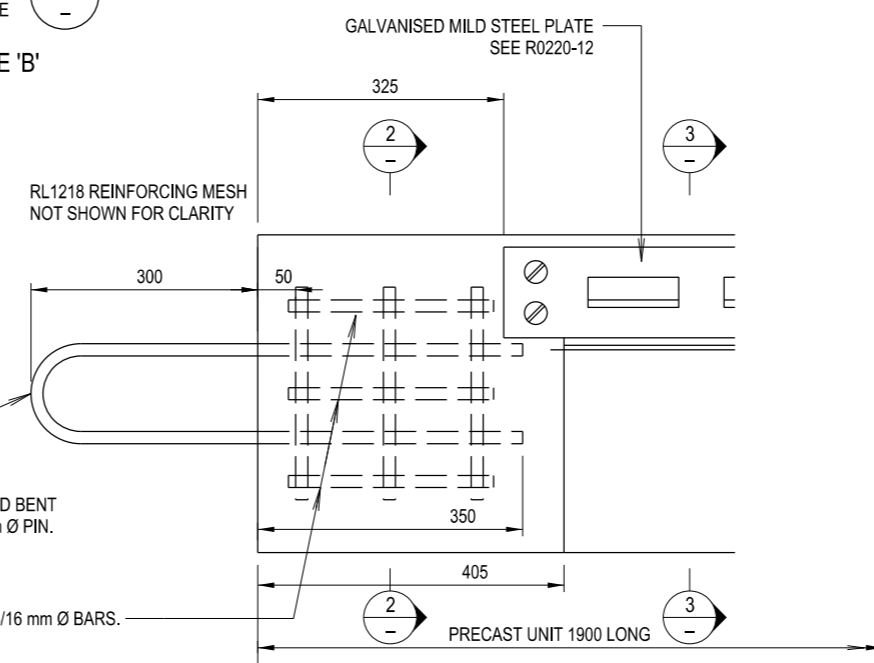
PRECAST MEDIAN KERB INLET



SECTION 2
NOT TO SCALE



TYPE A CONNECTION



ELEVATION

NOTE: REINFORCEMENT AND END TREATMENT TO BE DUPLICATED AT OTHER END.

- NOTES**
1. CONCRETE GRADE N25
 2. IMMEDIATELY PRIOR TO APPLICATION OF EPOXY GROUT OR CONCRETE, JOINTING SURFACES TO BE PAINTED WITH "WET TO DRY" EPOXY.
 3. ● LOCATION AND LEVEL OF PIT SHOWN IN THE DRAWINGS REFER TO THIS POINT AT THE CENTRE OF THE INLET.

THIS DRAWING MAY BE PREPARED IN COLOUR AND MAY BE INCOMPLETE IF COPIED

QR CODE		REV	DATE	AMENDMENT / REVISION DESCRIPTION	WVR No.	APPROVAL	ALL DIMENSIONS ARE IN MILLIMETRES UNLESS OTHERWISE SHOWN	ISSUED	Transport Roads & Maritime Services	STANDARD DRAWING ROAD DESIGN ENGINEERING R0220 STORMWATER DRAINAGE SERIES - GULLY PITS PRECAST MEDIAN KERB INLET FOR SF KERB SHEET 1 OF 1	STANDARD DRAWING No. R0220-11 STATUS ISSUED EDMS No. DS2014/005831 ORIGINAL ISSUE DATE JANUARY 2017
SCAN TO CHECK DOCUMENT VER.							CONTACT DETAILS	SEND FEEDBACK ON THIS STANDARD DRAWING TO : technologystandards@rms.nsw.gov.au DATE 20.01.17			