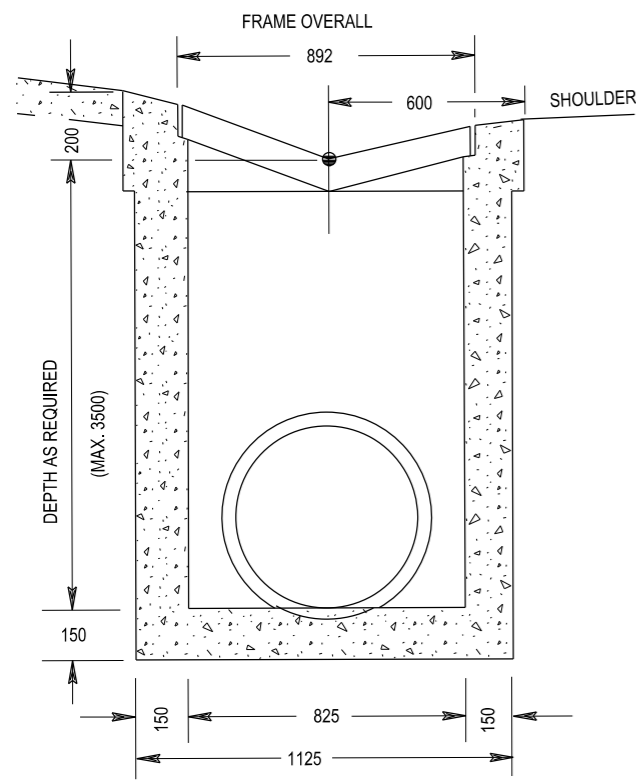
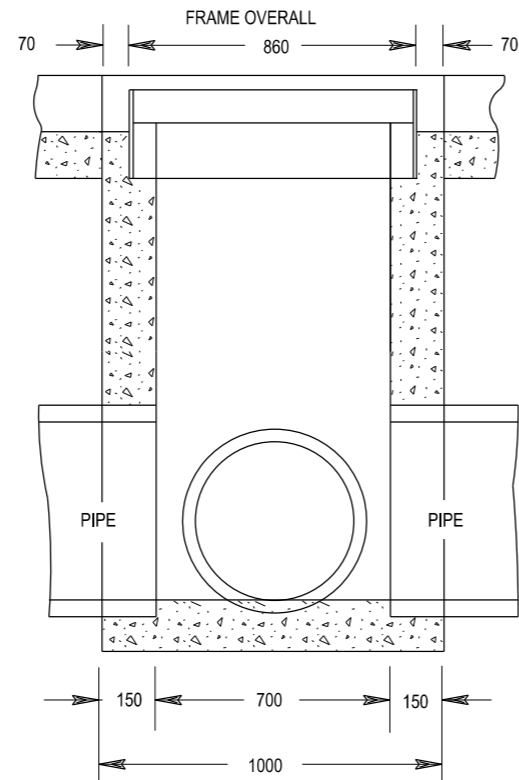


THIS DRAWING MAY BE PREPARED IN COLOUR AND MAY BE INCOMPLETE IF COPIED



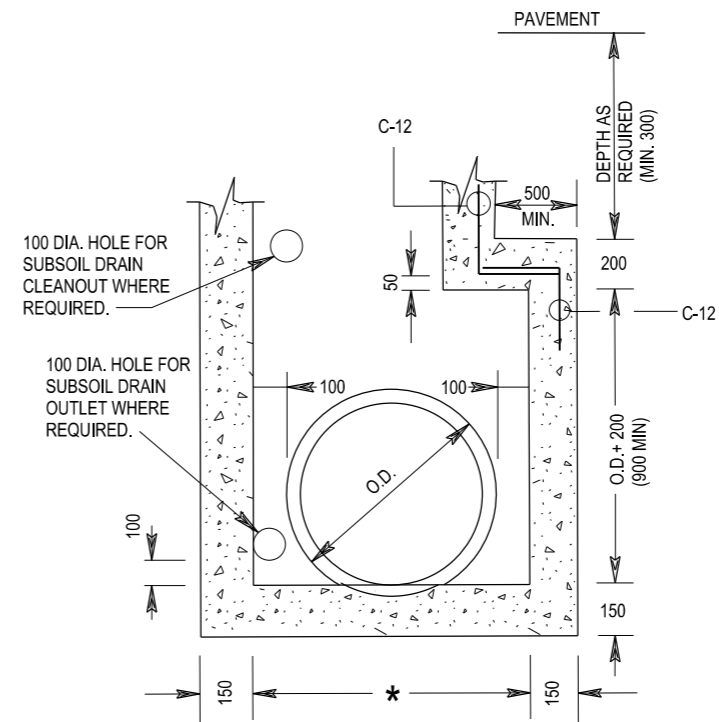
SECTION 1  
NOT TO SCALE

FOR PIPES ≤ 525 mm I.D.



SECTION 2  
NOT TO SCALE

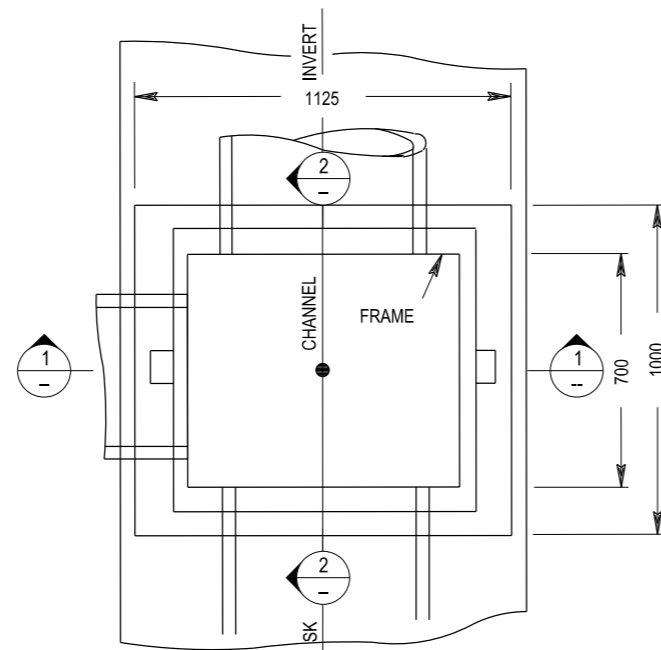
FOR PIPES ≤ 450 mm I.D.



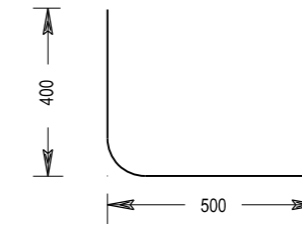
\* = O.D.+200

\* SEE R0240-01 FOR SPACING OF MULTIPLE PIPES.

LARGE OR MULTIPLE PIPES



PLAN  
PIT DETAILS



C-12 410Y AT 200 SPACING  
WELDING DETAILS  
NOT TO SCALE

NOTES

1. CONCRETE STRENGTH GRADE SHALL BE N25.
2. SIDE WALLS OF ALL PITS DEEPER THAN 1500 mm ARE TO BE REINFORCED WITH ONE LAYER OF SL82 MESH RETURNED 200 MINIMUM INTO BASE.
3. DEPTH OF PIT NOT TO EXCEED 3 500 mm (SPECIAL DESIGN REQUIRED).
4. PITS DEEPER THAN 1 200 mm TO BE FITTED WITH STEPS.
5. ALL EXPOSED EDGES TO BE ROUNDED WITH 20 mm RADIUS.
6. LOCATION AND CHANNEL LEVEL OF GULLY PIT IN PLANS REFER TO THIS POINT: ●
7. FOR DETAILS OF GRATE AND FRAME SEE R0220-19

ALL DIMENSIONS ARE IN MILLIMETRES UNLESS OTHERWISE SHOWN

QR CODE	SCAN TO CHECK DOCUMENT VER.	REV	DATE	AMENDMENT / REVISION DESCRIPTION	WVR No.	APPROVAL	SCALES ON A3 SIZE DRAWING	CONTACT DETAILS	ISSUED	STANDARD DRAWING No.	REV.
								SEND FEEDBACK ON THIS STANDARD DRAWING TO : technologystandards@rms.nsw.gov.au	SFR	R0220-14	-
								DATE 20.01.17	PREPARED BY ENGINEERING SERVICES ROAD POLICY, SPECIFICATIONS AND AND TECHNOLOGY	DS2014/005834	ORIGINAL ISSUE DATE JANUARY 2017



PREPARED BY  
ENGINEERING SERVICES  
ROAD POLICY, SPECIFICATIONS AND  
AND TECHNOLOGY

STANDARD DRAWING  
ROAD DESIGN ENGINEERING  
R0220 STORMWATER DRAINAGE SERIES - GULLY PITS  
STANDARD GULLY PIT TYPE SK1

STANDARD DRAWING No. R0220-14  
STATUS ISSUED  
EDMS No. DS2014/005834  
ORIGINAL ISSUE DATE JANUARY 2017