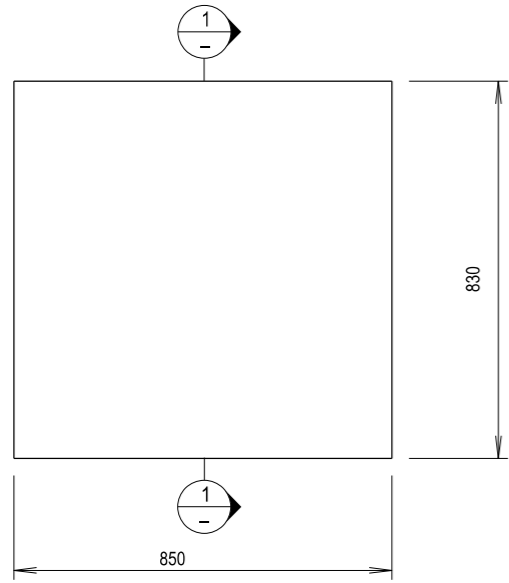
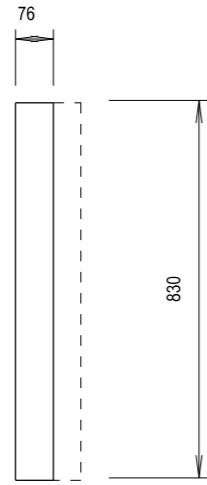


ELEVATION

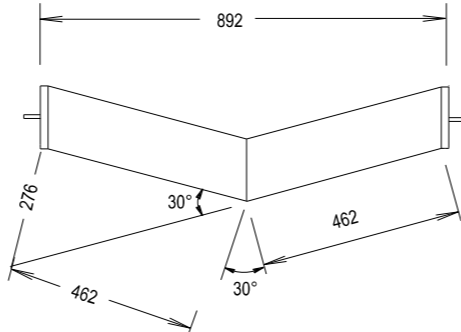


PLAN

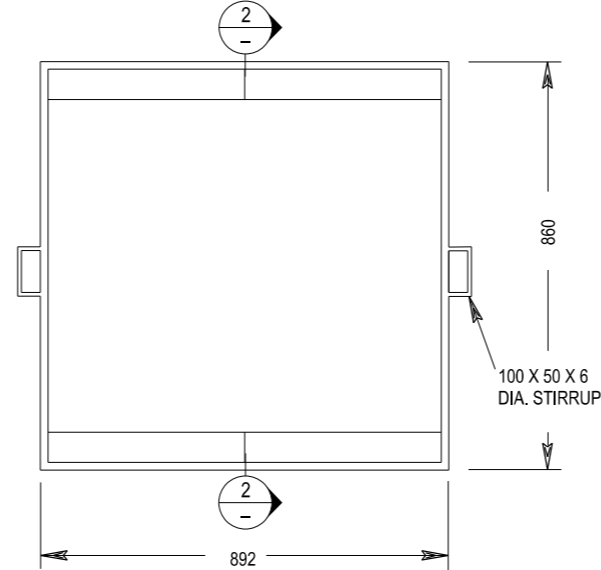
GRATE



SECTION 1
NOT TO SCALE

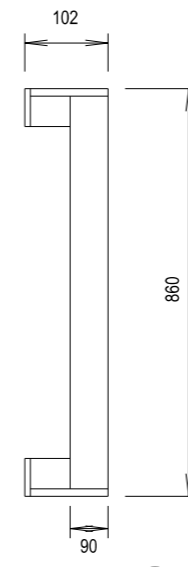


ELEVATION

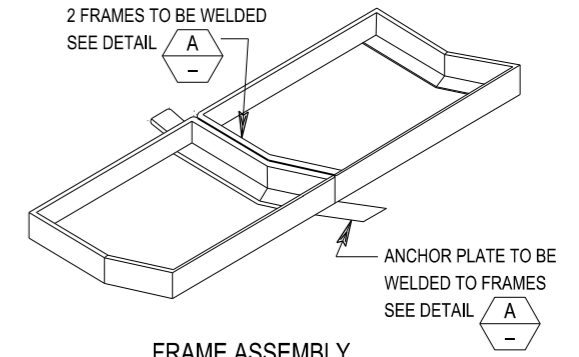


PLAN

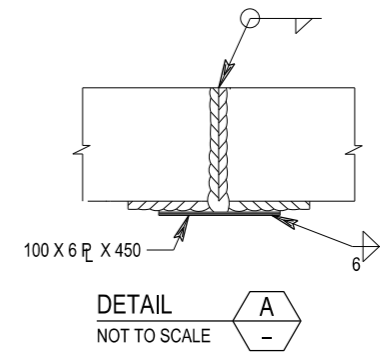
FRAME



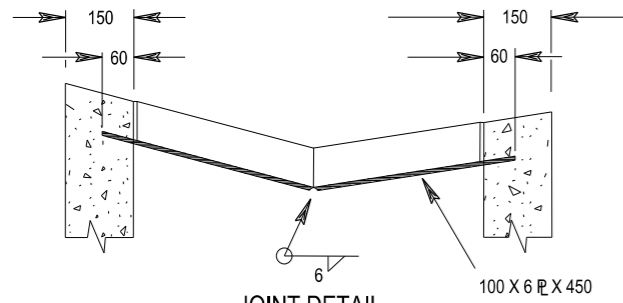
SECTION 2
NOT TO SCALE



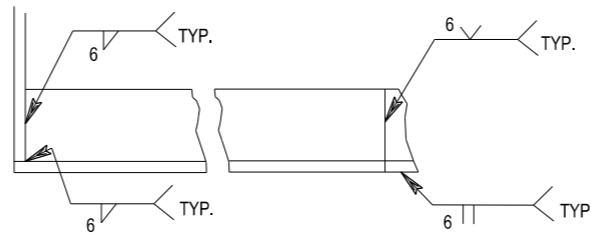
FRAME ASSEMBLY
SHOWING METHOD OF JOINING FRAMES TO ANCHOR PLATE.



DETAIL A
NOT TO SCALE



JOINT DETAIL





FRAME
WELDING DETAILS
NOT TO SCALE

NOTES

1. STEEL GRATES AND FRAMES ARE TO BE FABRICATED FROM MILD STEEL AND HOT DIP GALVANISED.
2. GRATING PATTERN AND BAR SIZES MAY VARY BUT SHALL BE CLASS D AND BICYCLE SAFE IN ACCORDANCE WITH AS 3996 UNLESS OTHERWISE STATED.

THIS DRAWING MAY BE PREPARED IN COLOUR AND MAY BE INCOMPLETE IF COPIED

50mm ON A3 SIZE ORIGINAL

QR CODE		SCAN TO CHECK DOCUMENT VER.		REV	DATE	AMENDMENT / REVISION DESCRIPTION	WVR No.	APPROVAL	ALL DIMENSIONS ARE IN MILLIMETRES UNLESS OTHERWISE SHOWN		ISSUED	 Transport Roads & Maritime Services	STANDARD DRAWING ROAD DESIGN ENGINEERING R0220 STORMWATER DRAINAGE SERIES - GULLY PITS STANDARD GULLY PIT TYPE SK GRATINGS AND FRAMES SHEET 1 OF 1	A3
									CONTACT DETAILS	SFR MANAGER ROAD POLICY, SPECIFICATIONS & TECHNOLOGY SEND FEEDBACK ON THIS STANDARD DRAWING TO : technologystandards@rms.nsw.gov.au DATE 20.01.17	PREPARED BY ENGINEERING SERVICES ROAD POLICY, SPECIFICATIONS AND AND TECHNOLOGY			