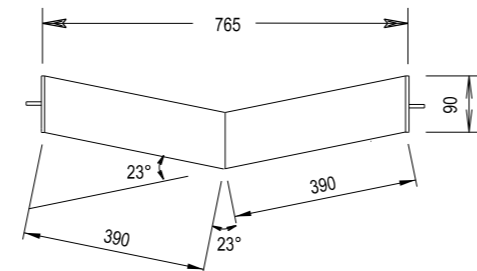
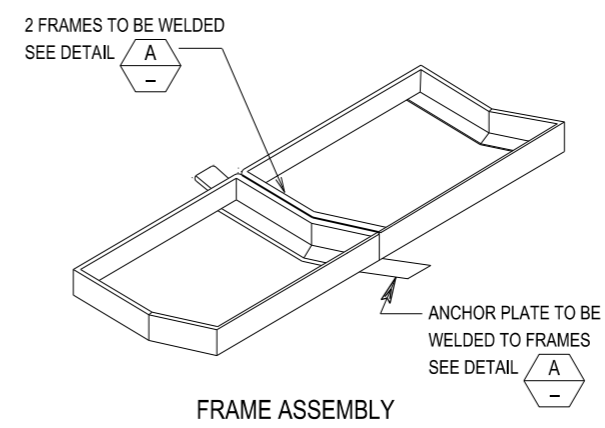


ELEVATION

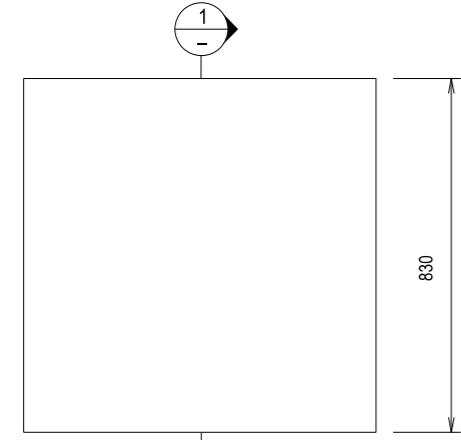


ELEVATION



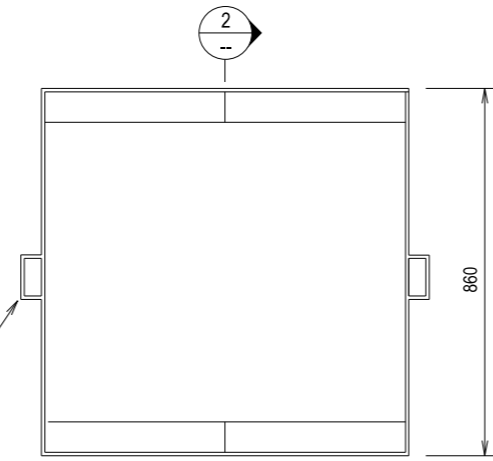
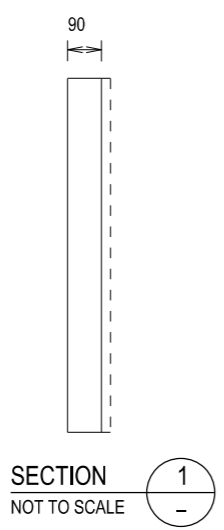
FRAME ASSEMBLY

SHOWING METHOD OF JOINING FRAMES TO ANCHOR PLATE.

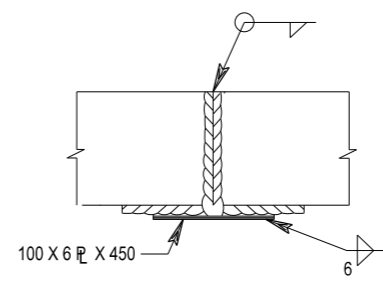
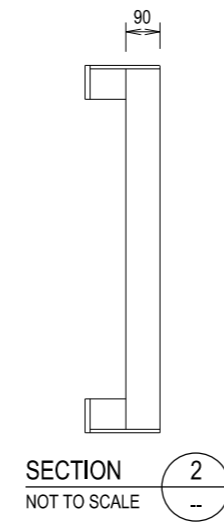


PLAN

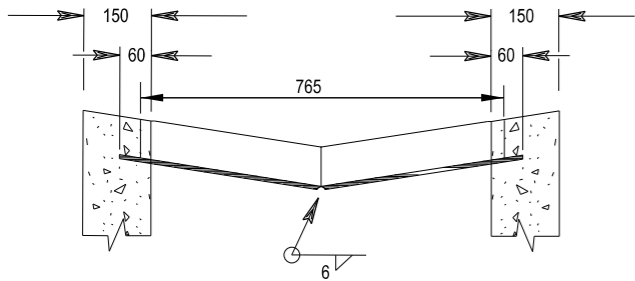
GRATE



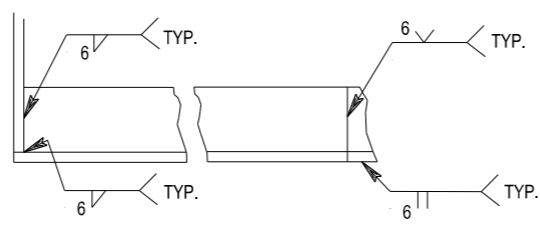
PLAN
FRAME



DETAIL A



JOINT DETAIL



FRAME
WELDING DETAILS
NOT TO SCALE

NOTES

1. STEEL GRATES AND FRAMES ARE TO BE FABRICATED FROM MILD STEEL AND HOT DIP GALVANISED.
2. GRATING PATTERN AND BAR SIZES MAY VARY BUT SHALL BE CLASS D AND BICYCLE SAFE IN ACCORDANCE WITH AS 3996 UNLESS OTHERWISE STATED.

THIS DRAWING MAY BE PREPARED IN COLOUR AND MAY BE INCOMPLETE IF COPIED

ALL DIMENSIONS ARE IN MILLIMETRES UNLESS OTHERWISE SHOWN										Transport Roads & Maritime Services		STANDARD DRAWING ROAD DESIGN ENGINEERING R0220 STORMWATER DRAINAGE SERIES - GULLY PITS STANDARD GULLY PIT TYPE SO GRATINGS AND FRAMES SHEET 1 OF 1		A3					
QR CODE	SCAN TO CHECK DOCUMENT VER.	REV	DATE	AMENDMENT / REVISION DESCRIPTION	WVR No.	APPROVAL	SCALES ON A3 SIZE DRAWING	CONTACT DETAILS	ISSUED	MANAGER ROAD POLICY, SPECIFICATIONS & TECHNOLOGY	DATE	20.01.17	PREPARED BY	ENGINEERING SERVICES	ROAD POLICY, SPECIFICATIONS AND AND TECHNOLOGY	STANDARD DRAWING No.	R0220-23	REV.	-
								SEND FEEDBACK ON THIS STANDARD DRAWING TO : technologystandards@rms.nsw.gov.au	SFR						EDMS No.	DS2014/005843	ORIGINAL ISSUE DATE	JANUARY 2017	
© Roads and Maritime Services																			