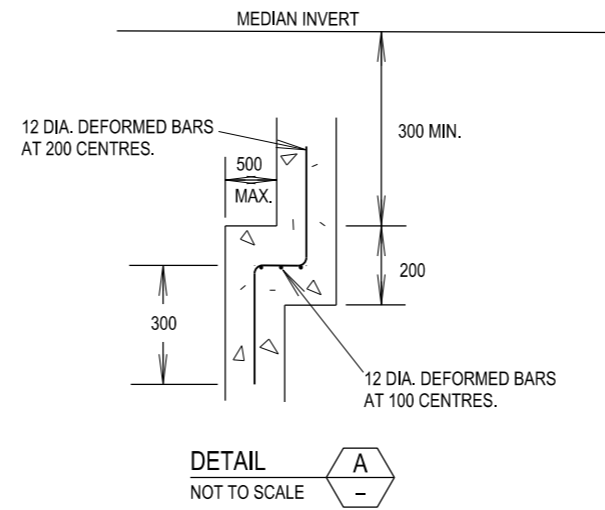
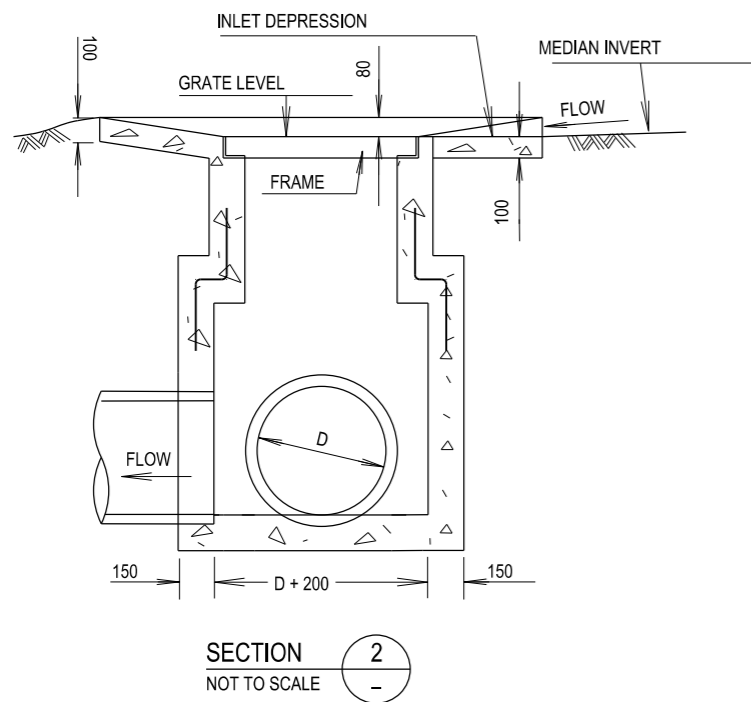
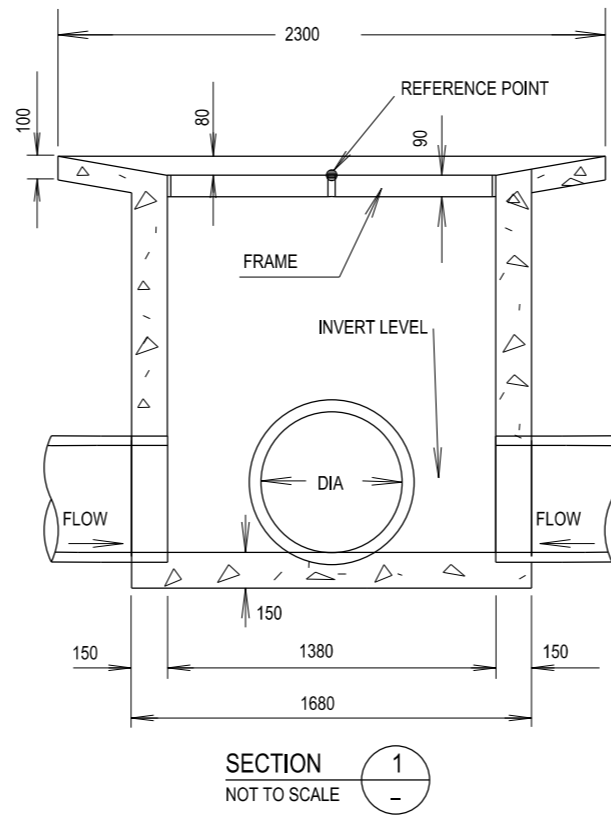
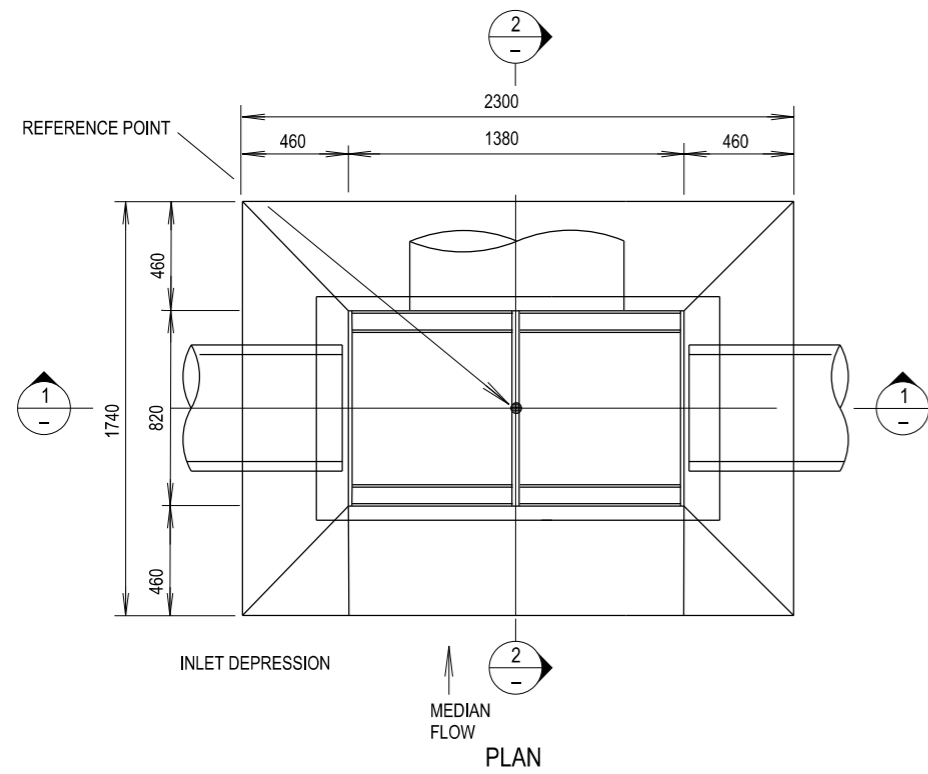


THIS DRAWING MAY BE PREPARED IN COLOUR AND MAY BE INCOMPLETE IF COPIED
50mm ON A3 SIZE ORIGINAL



- NOTES**
1. INLET OUTLET PIPES TO BE LOCATED AS PER DRAINAGE PLANS.
 2. PIPES TO BE CONNECTED TO PIT IN ACCORDANCE WITH R0220-43
 3. WHERE THE GULLY PIT IS LOCATED IN A SAG, INLET DEPRESSIONS ARE TO BE PROVIDED ON BOTH SIDES OF THE GULLY PIT.
 4. MATERIAL IN FRAMES AND GRATES TO BE MILD STEEL, HOT DIP GALVANISED.
 5. USE CONCRETE GRADE N25.
 6. SIDEWALLS OF PITS DEEPER THAN 1500 TO BE REINFORCED WITH ONE LAYER OF SL82 MESH RETURNED 300 INTO BASE.
 7. PITS DEEPER THAN 1200 TO BE FITTED WITH GALVANISED STEP IRONS.
 8. PROVIDE SUBSOIL DRAINS INTO PITS AS REQUIRED.
 9. DEPTH OF PIT NOT TO EXCEED 3500 mm.
 10. PIT SHOWN IS DOUBLE GRATE. FOR OTHER PIT DIMENSIONS REFER TO MD.R11.B30.
 11. FOR DETAILS OF FRAME AND GRATE SEE R0220-33

QR CODE				SCAN TO CHECK DOCUMENT VER.				ALL DIMENSIONS ARE IN MILLIMETRES UNLESS OTHERWISE SHOWN				ISSUED		STANDARD DRAWING		A3			
REV				DATE				SCALES ON A3 SIZE DRAWING				SFR		ROAD DESIGN ENGINEERING		REV.			
AMENDMENT / REVISION DESCRIPTION				WVR No.				CONTACT DETAILS				MANAGER ROAD POLICY, SPECIFICATIONS & TECHNOLOGY		R0220-31		OF 1			
APPROVAL				DATE				SEND FEEDBACK ON THIS STANDARD DRAWING TO : technologystandards@rms.nsw.gov.au				DATE 20.01.17		PREPARED BY ENGINEERING SERVICES ROAD POLICY, SPECIFICATIONS AND AND TECHNOLOGY		STANDARD DRAWING No. R0220-31		ORIGINAL ISSUE DATE JANUARY 2017	
EDMS No.				ORIGINAL ISSUE DATE				ISSUED				EDMS No. DS2014/005851		ORIGINAL ISSUE DATE JANUARY 2017		© Roads and Maritime Services			

