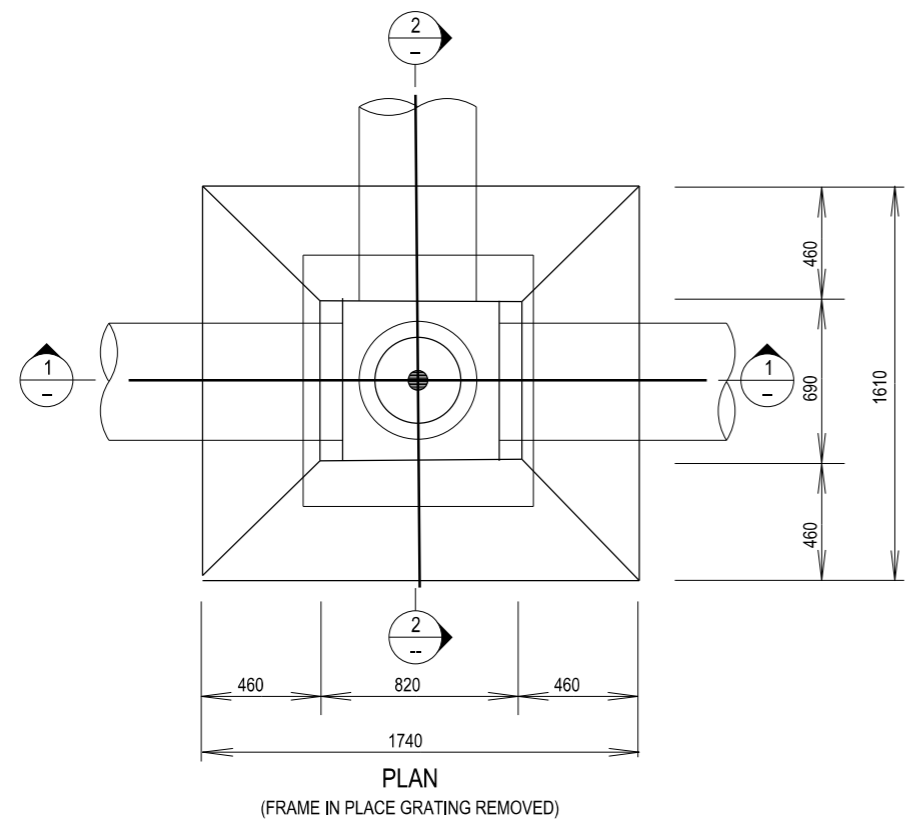
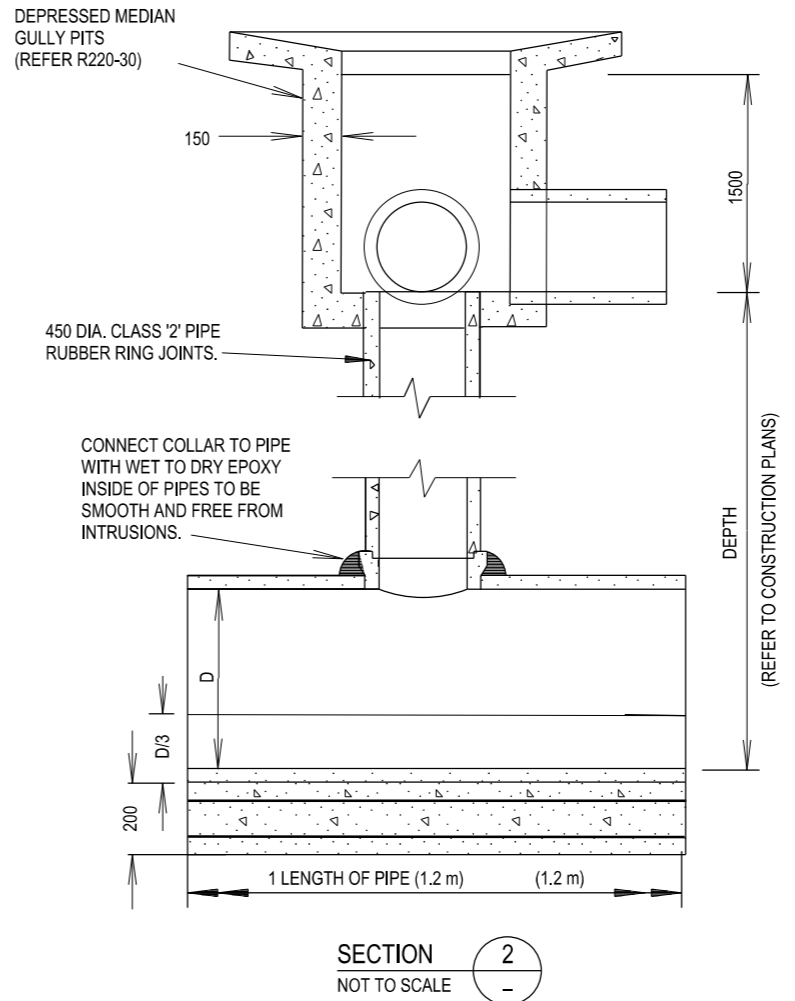
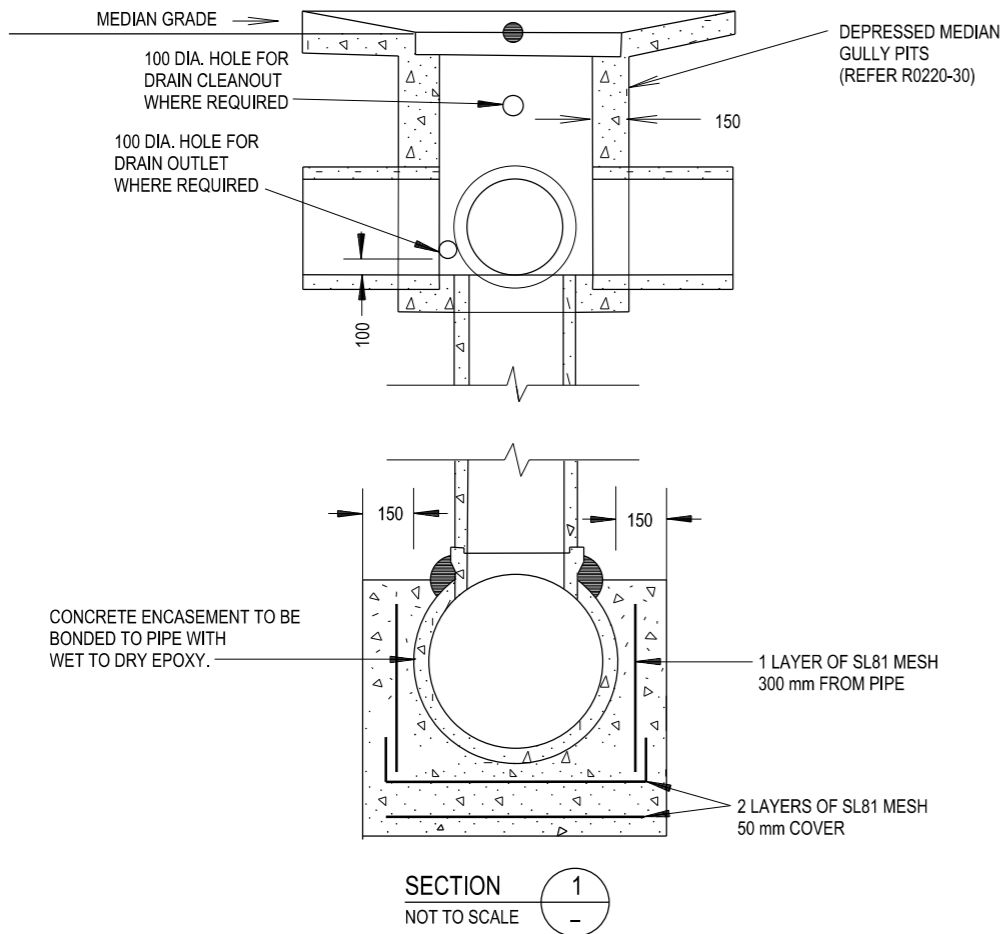


THIS DRAWING MAY BE PREPARED IN COLOUR AND MAY BE INCOMPLETE IF COPIED



- NOTES**
1. CONCRETE GRADE N25.
 2. LOCATION AND LEVEL OF GULLY PIT SHOWN IN THE DRAWINGS REFER TO THIS POINT: ●
 3. FOR DETAILS OF GRATE AND FRAME SEE R0220-33
 4. SUITABLE FOR SINGLE, DOUBLE, TRIPLE AND QUAD PITS (R0220-30).

QR CODE			SCAN TO CHECK DOCUMENT VER.			ALL DIMENSIONS ARE IN MILLIMETRES UNLESS OTHERWISE SHOWN			ISSUED			STANDARD DRAWING			A3		
REV			DATE			SCALES ON A3 SIZE DRAWING			SFR			ROAD DESIGN ENGINEERING			-		
AMENDMENT / REVISION DESCRIPTION			WVR No.			CONTACT DETAILS			MANAGER ROAD POLICY, SPECIFICATIONS & TECHNOLOGY			R0220 STORMWATER DRAINAGE SERIES - GULLY PITS			REV.		
						SEND FEEDBACK ON THIS STANDARD DRAWING TO : technologystandards@rms.nsw.gov.au			DATE 20.01.17			DMG PIT TO PIPE CONNECTION			SHEET 1 OF 1		
									NSW GOVERNMENT			Transport Roads & Maritime Services			STANDARD DRAWING No. R0220-32		
									PREPARED BY ENGINEERING SERVICES ROAD POLICY, SPECIFICATIONS AND AND TECHNOLOGY			EDMS No. DS2014/005852			ORIGINAL ISSUE DATE JANUARY 2017		
												ISSUED			© Roads and Maritime Services		