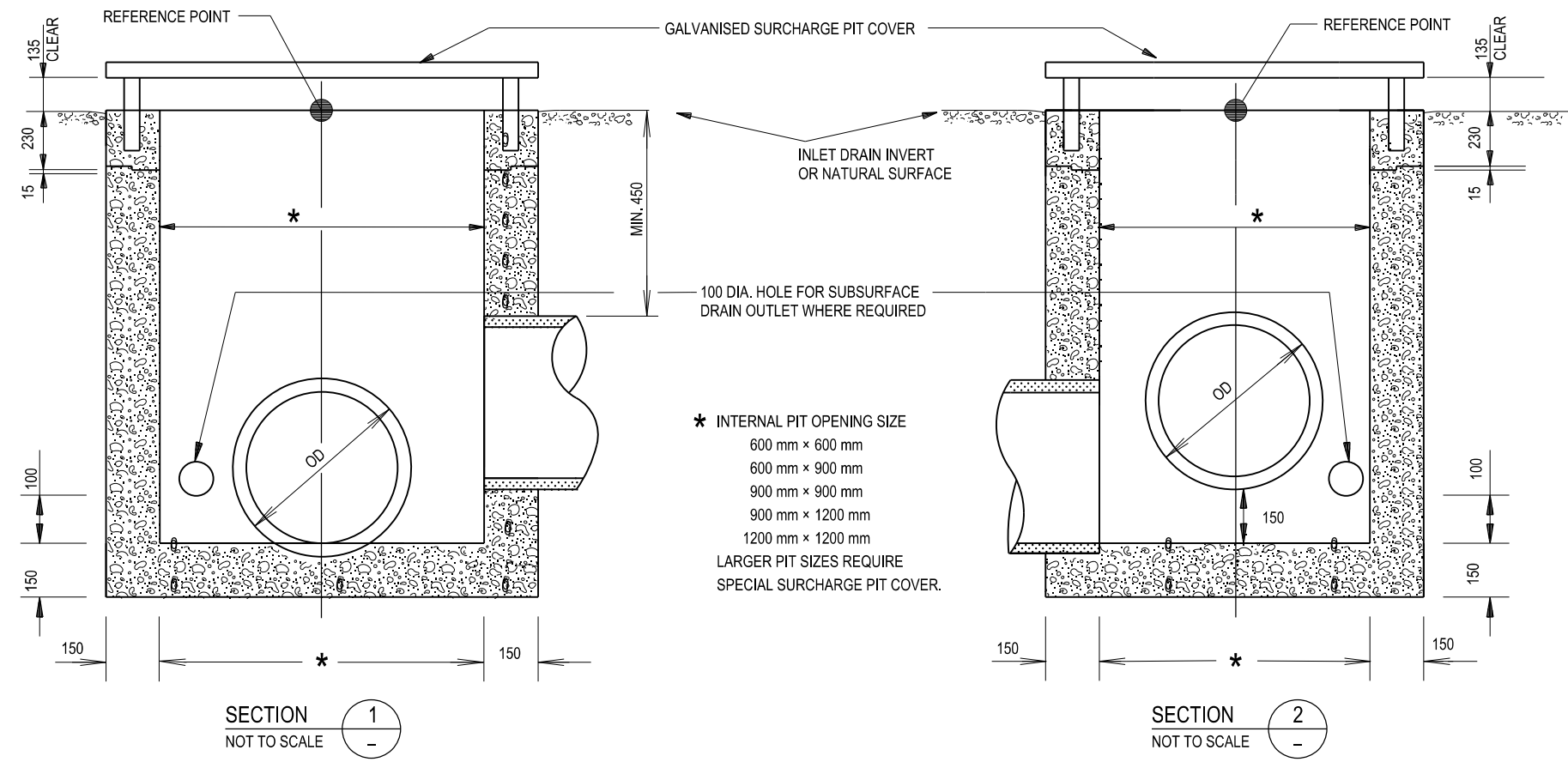
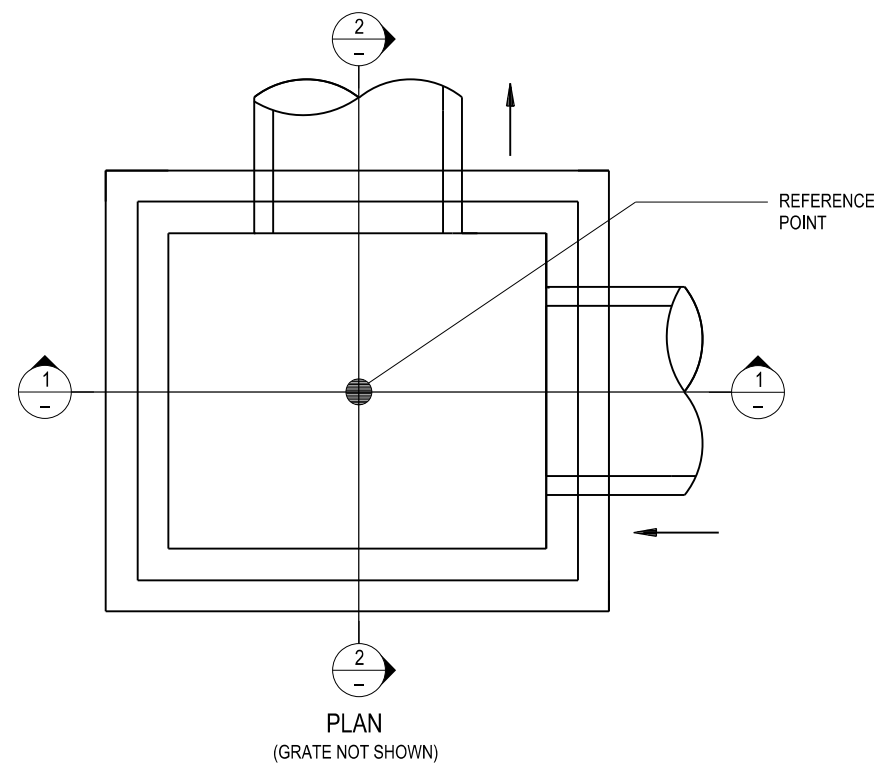


THIS DRAWING MAY BE PREPARED IN COLOUR AND MAY BE INCOMPLETE IF COPIED
50mm ON A3 SIZE ORIGINAL



ELEVATION



PLAN
(GRATE NOT SHOWN)

NOTES

1. CONCRETE GRADE N25.
2. LOCATION AND LEVEL OF INLET SUMP SHOWN IN THE DRAWINGS REFER TO THIS POINT: ●
3. SIDE WALLS OF ALL PITS DEEPER THAN 1500 TO BE REINFORCED WITH ONE LAYER OF SL82 MESH RETURNED 300 INTO BASE.
4. AT RIGHT ANGLE CHANGE IN PIPE DIRECTION OUTLET INVERT TO BE 150 BELOW INLET INVERT.
5. DEPTH OF JUNCTION BOX NOT TO EXCEED 3500.
6. MINIMUM COVER OF REINFORCEMENT SHALL BE 50 UNLESS SHOWN OTHERWISE.

QR CODE				REV	DATE	AMENDMENT / REVISION DESCRIPTION	WVR No.	APPROVAL	SCALES ON A3 SIZE DRAWING	CONTACT DETAILS	ISSUED	Transport Roads & Maritime Services	STANDARD DRAWING ROAD DESIGN ENGINEERING R0220 STORMWATER DRAINAGE SERIES - GULLY PITS INLET SUMP WITH RAISED STEEL GRATE SHEET 1 OF 1	STANDARD DRAWING No. R0220-36 REV. - STATUS ISSUED ORIGINAL ISSUE DATE JANUARY 2017
									ALL DIMENSIONS ARE IN MILLIMETRES UNLESS OTHERWISE SHOWN	SEND FEEDBACK ON THIS STANDARD DRAWING TO : technologystandards@rms.nsw.gov.au	SFR MANAGER ROAD POLICY, SPECIFICATIONS & TECHNOLOGY DATE 20.01.17			