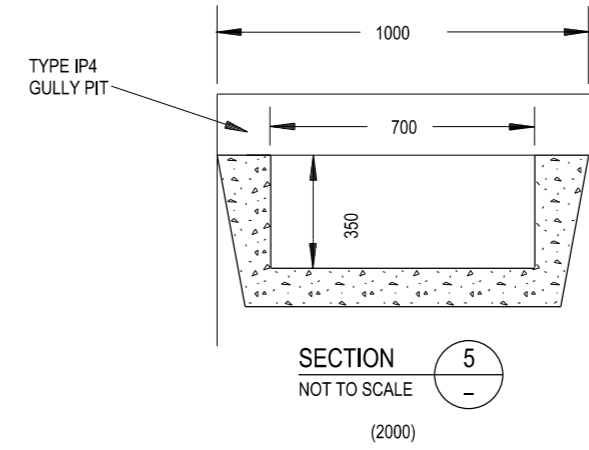
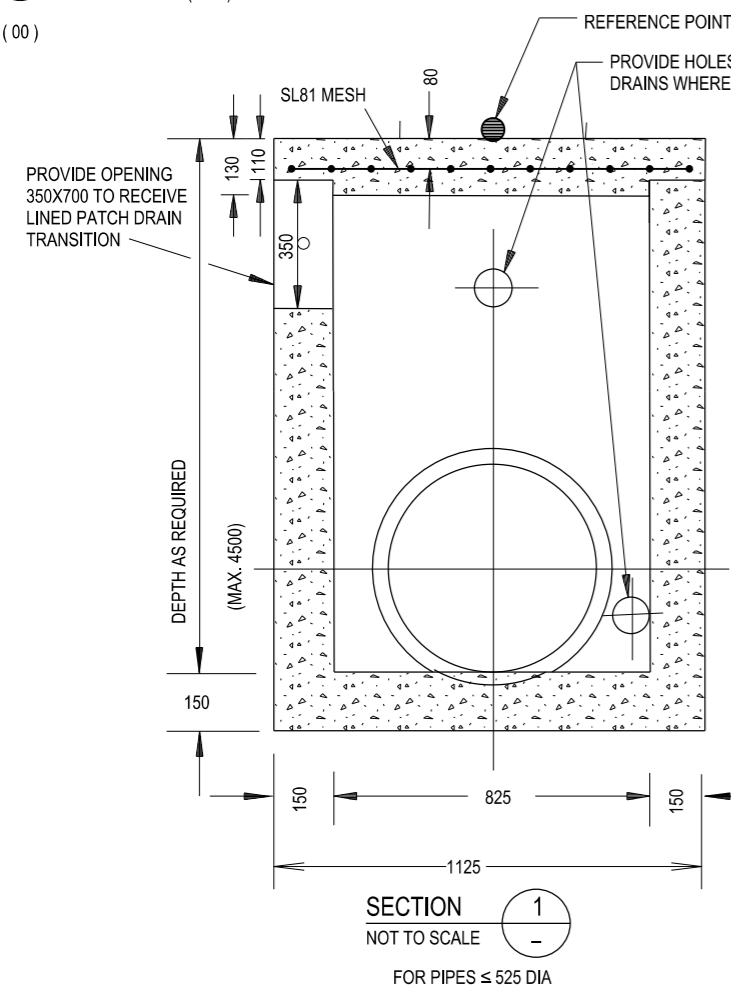


SECTION 3
NOT TO SCALE
(00)
TRANSITION
FROM LINED CATCH DRAINS (TYPE A & B)
TO SIDE OPENING PIT (LENGTH = 2000)

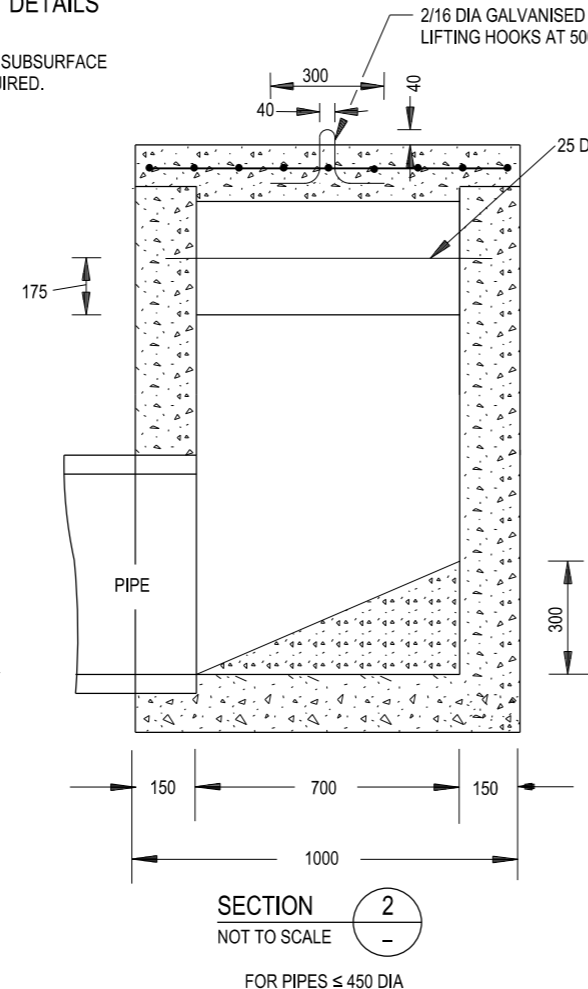


SECTION 5
NOT TO SCALE
(2000)

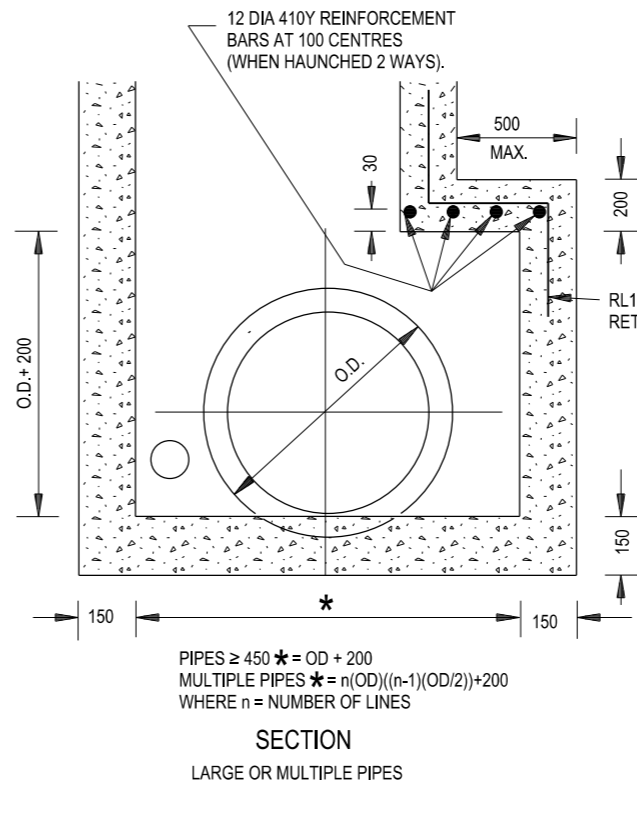
PLAN
PIT DETAILS



SECTION 1
NOT TO SCALE
FOR PIPES ≤ 525 DIA



SECTION 2
NOT TO SCALE
FOR PIPES ≤ 450 DIA



SECTION
LARGE OR MULTIPLE PIPES

- NOTES**
1. CONCRETE GRADE N25.
 2. LOCATION AND LEVEL OF INSPECTION PIT SHOWN IN DRAWINGS REFER TO THIS POINT: ●
 3. SIDE WALLS OF PITS BETWEEN 1500 AND 3500 ARE TO BE REINFORCED WITH ONE LAYER OF SL82 MESH RETURNED 300 INTO BASE.
 4. SIDE WALLS OF PITS BETWEEN 3500 AND 4500 ARE TO BE REINFORCED WITH ONE LAYER OF SL81 MESH RETURNED 300 INTO BASE.
 5. DEPTH OF PIT NOT TO EXCEED 4500.
 6. PITS DEEPER THAN 1200 TO BE FITTED WITH GALVANISED STEP IRONS.
 7. ALL EXPOSED EDGES TO BE ROUNDED WITH 20 RADIUS.
 8. ALL STEEL TO HAVE MIN. 50 COVER.

THIS DRAWING MAY BE PREPARED IN COLOUR AND MAY BE INCOMPLETE IF COPIED

50mm ON A3 SIZE ORIGINAL

QR CODE		REV		AMENDMENT / REVISION DESCRIPTION		WVR No.		APPROVAL		ALL DIMENSIONS ARE IN MILLIMETRES UNLESS OTHERWISE SHOWN		ISSUED		STANDARD DRAWING		A3	
SCAN TO CHECK DOCUMENT VER.										SCALES ON A3 SIZE DRAWING		SFR		ROAD DESIGN ENGINEERING			
[QR CODE]										CONTACT DETAILS		MANAGER ROAD POLICY, SPECIFICATIONS & TECHNOLOGY		R0220 STORMWATER DRAINAGE SERIES - GULLY PITS			
										SEND FEEDBACK ON THIS STANDARD DRAWING TO : technologystandards@rms.nsw.gov.au		DATE 20.01.17		INSPECTION PIT (IP 4) WITH LINED TYPE (A & B)		SHEET 1 OF 1	
												PREPARED BY ENGINEERING SERVICES ROAD POLICY, SPECIFICATIONS AND AND TECHNOLOGY		CATCH DRAIN INLET		REV. -	
												NSW GOVERNMENT Transport Roads & Maritime Services		STANDARD DRAWING No. R0220-38		ORIGINAL ISSUE DATE JANUARY 2017	
												EDMS No. DS2014/005858		STATUS ISSUED		© Roads and Maritime Services	