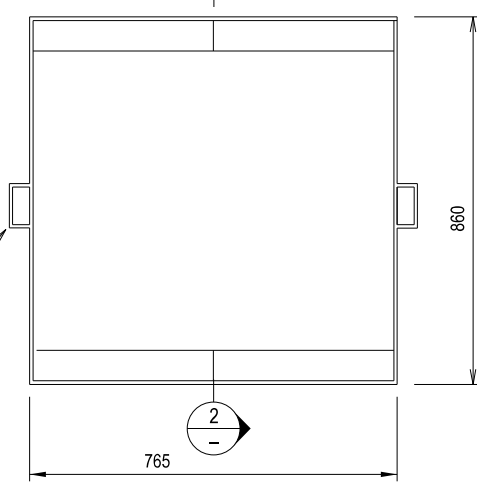
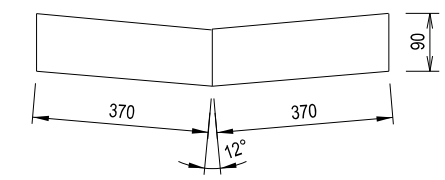


ELEVATION

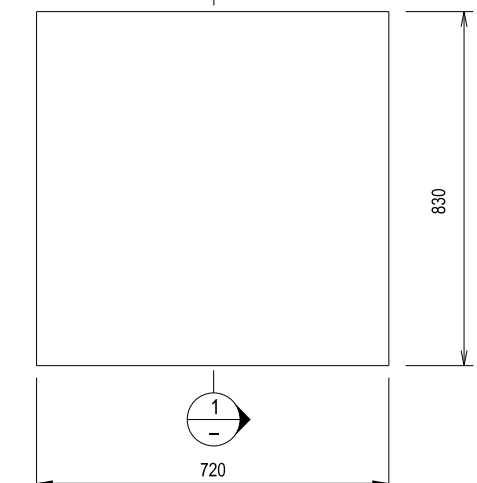


PLAN

FRAME

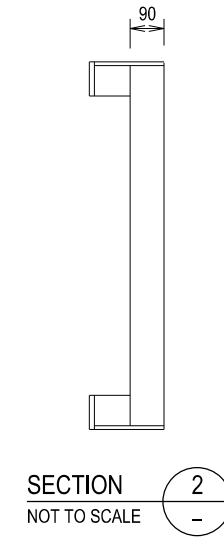


ELEVATION

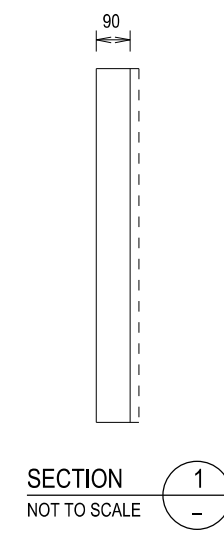


PLAN

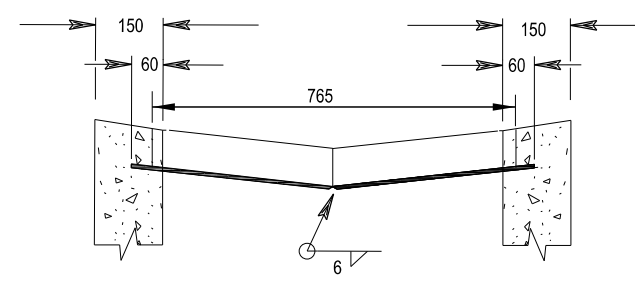
GRATE



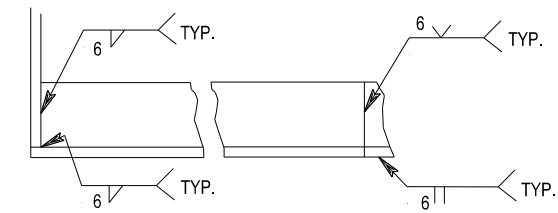
SECTION 2-2
NOT TO SCALE



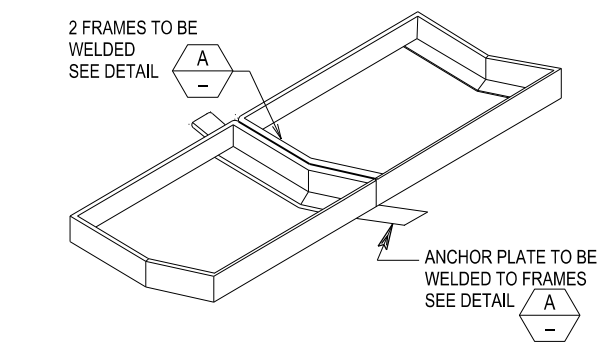
SECTION 1-1
NOT TO SCALE



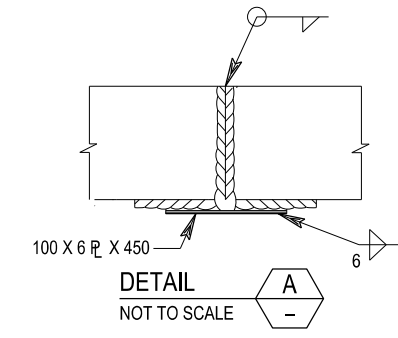
JOINT DETAIL



FRAME WELDING DETAILS



FRAME ASSEMBLY
SHOWING METHOD OF JOINING FRAMES TO ANCHOR PLATE.



DETAIL A
NOT TO SCALE

THIS DRAWING MAY BE PREPARED IN COLOUR AND MAY BE INCOMPLETE IF COPIED



REV	DATE	AMENDMENT / REVISION DESCRIPTION	WVR No.	APPROVAL

ALL DIMENSIONS ARE IN MILLIMETRES UNLESS OTHERWISE SHOWN	
SCALES ON A3 SIZE DRAWING	CONTACT DETAILS
	SEND FEEDBACK ON THIS STANDARD DRAWING TO : technologystandards@rms.nsw.gov.au
	DATE 20.01.17

ISSUED	
SFR	
MANAGER ROAD POLICY, SPECIFICATIONS & TECHNOLOGY	


Transport Roads & Maritime Services
 PREPARED BY
 ENGINEERING SERVICES
 ROAD POLICY, SPECIFICATIONS AND
 AND TECHNOLOGY

STANDARD DRAWING		A3
ROAD DESIGN ENGINEERING		
R0220 STORMWATER DRAINAGE SERIES - GULLY PITS		
STANDARD GULLY PIT TYPE SB		
GRATINGS AND FRAMES		SHEET 1 OF 1
STANDARD DRAWING No. R0220-51		
STATUS	EDMS No.	ORIGINAL ISSUE DATE
ISSUED	DS2014/005872	JANUARY 2017

- NOTES**
1. STEEL GRATES AND FRAMES ARE TO BE FABRICATED FROM MILD STEEL AND HOT DIP GALVANISED.
 2. GRATING PATTERN AND BAR SIZES MAY VARY BUT SHALL BE CLASS D AND BICYCLE SAFE IN ACCORDANCE WITH AS 3996 UNLESS OTHERWISE STATED.