

# Appendix C – Example TGS

## INFORMATIONAL APPENDIX

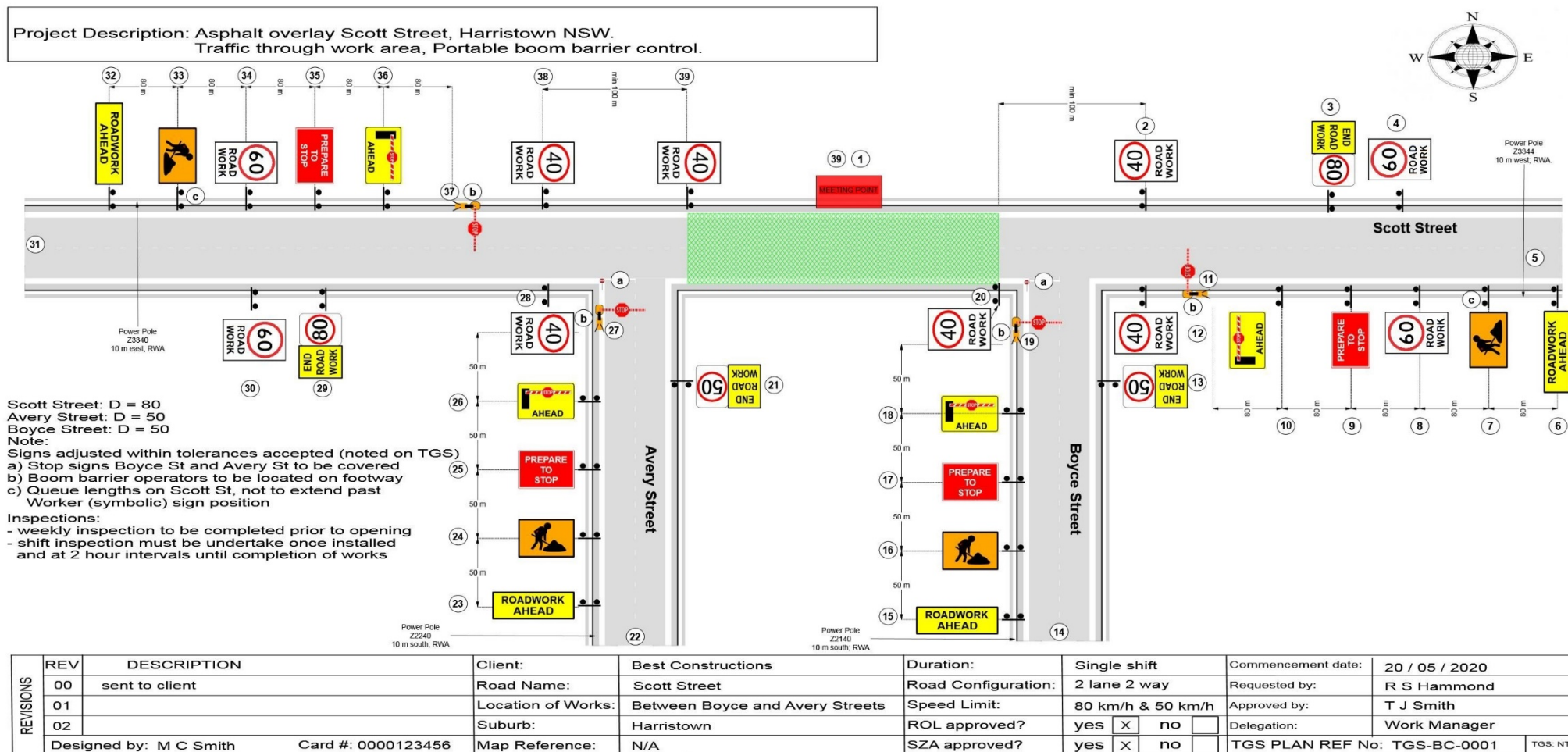


Figure E-1. Completed TGS

THIS PAGE LEFT INTENTIONALLY BLANK

**REAR OF TGS:**

The following must be applied when installing the attached TGS for Asphalt works to be completed on Dews Street; McGilvray NSW (see *Figure E-1.*)

STEP	ACTION
1	Depart the meeting point
2/3/4	Install R4-212 (40), 'End Road Work/speed reinstatement' and install R4-212 (60) as the first sign when initially leaving work area.
5	Use the existing road network to turn where safe to do so
6/7/8/9/10/11	Then place approach signage signs, including the portable boom barrier in upright position (TC (b) to remain with boom barrier).
12/13	Then install R4-212 (40) turn left into Boyce Street, install 'End Road Work/speed reinstatement'
14	Use the existing road network to turn where safe to do so
15/16/17/18/19	Then place approach signage signs, including the portable boom barrier in upright position (TC (b) to remain with boom barrier).
20/21	Then turn left Dews St install R4-212 (40), then turn left Avery Street, install 'End Road Work/speed reinstatement'
22	Use the existing road network to turn where safe to do so
23/24/25/26/27	Then place approach signage signs, including the portable boom barrier in upright position (TC (b) to remain with boom barrier).
28/29/30	Then turn left Twice Road, install 'End Road Work/speed reinstatement' and install R4-212 (60)
31	Use the existing road network to turn where safe to do so
32/33/34/35/36/37	Then place approach signage signs, including the portable boom barrier in upright position (TC (b) to remain with boom barrier).
38/39	Then install both R4-212 (40).
40	Return to meeting point and confirm readiness with TCs