

Night work at Empire Bay Drive and The Scenic Road intersection, Kincumber from Sunday 14 April

The NSW Government is investing \$20 million to upgrade the Empire Bay Drive and The Scenic Road intersection to improve traffic flow and safety for road users.

Roads and Maritime Services is upgrading the existing roundabout at Empire Bay Drive, The Scenic Road and Cochrone Street at Kincumber to reduce congestion and improve safety for road users.

Upcoming work activities

Work is continuing to be carried out between **7am** and **6pm** on **weekdays** and between **8am** and **1pm** on **Saturdays**, weather permitting.

Night work will be carried out from **Sunday 14 April**, weather permitting. We will be working between **6pm** and **5am** and expect to complete this work in **three nights**.

Work will include building a pedestrian refuge on Empire Bay Drive between Kerta Road and Bridge Street and saw cutting of the asphalt road at the intersection of Empire Bay Drive and The Scenic Road.

Night work will also be carried out from **Sunday 28 April**, between **6pm** and **5am** to resurface Empire Bay Drive between The Scenic Road and Bridge Street.

We will be working between **Sunday and Thursday** nights and expect to complete the resurfacing work in **10 shifts**, weather permitting.

How will work affect you?

The night work will involve the use of machinery which generates some noise. We will make every effort to minimise noise by completing noisier activities earlier in the shift and turning off machinery and vehicles when not in use.

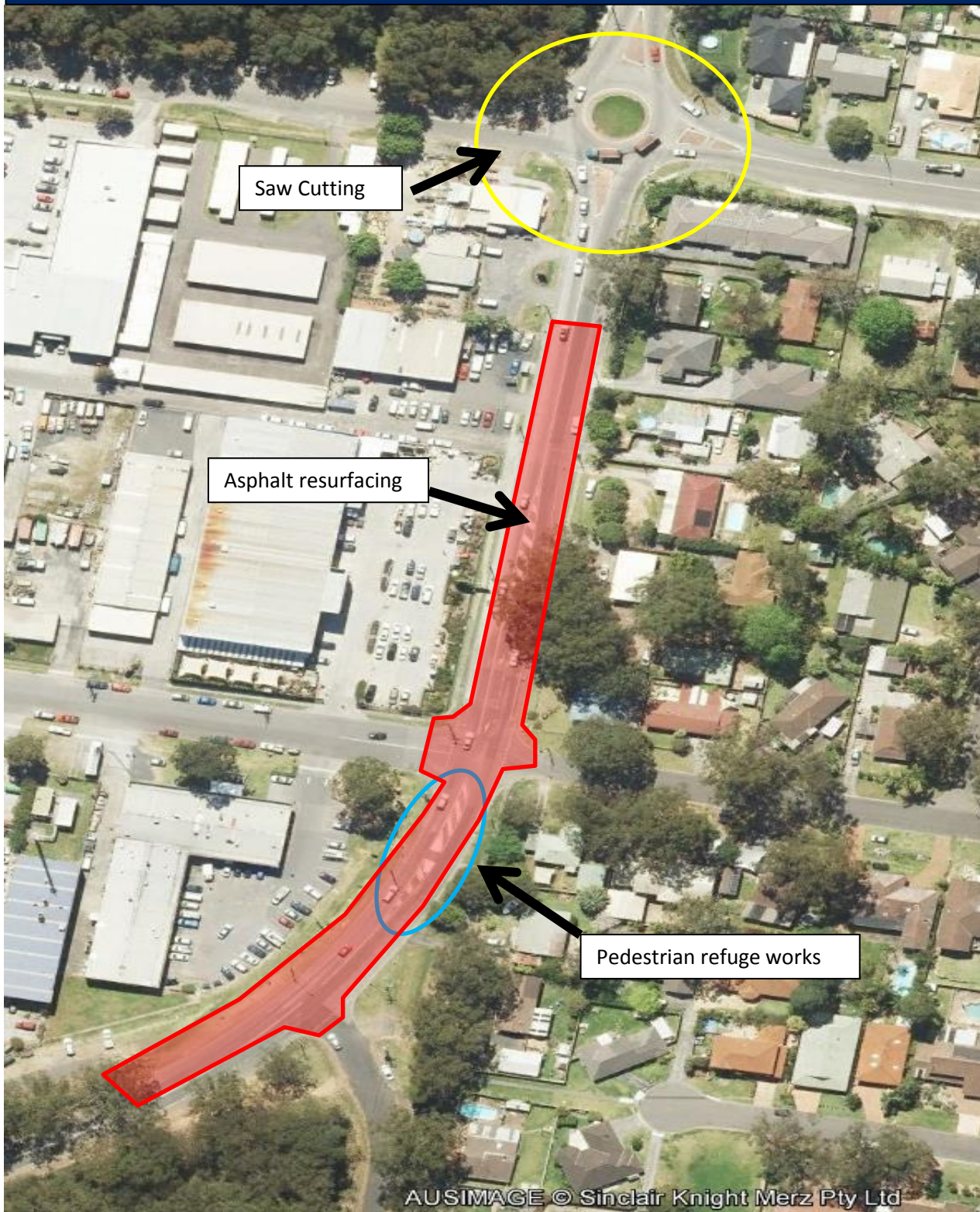
Traffic changes

Lane closures and traffic control will be in place during work hours which may affect travel times.

Detours will be in place in some shifts with motorists diverted via Cochrone Street, Hawke Street and Kerta Road. Signs and traffic control will help direct motorists.

A permanent 40 km/h reduced speed limit remains in place through the work zone for the safety of motorists and workers. Please keep to speed limits and follow the direction of traffic controllers and signs. For the latest traffic updates, you can call 132 701, visit livetraffic.com or download the Live Traffic NSW App.

Night work on Empire Bay Drive at Kincumber



Contact

If you have any questions, please contact the project information line on 1800 670 016. For more information on this project, visit rms.nsw.gov.au/empirebaydrive.



If you need help understanding this information, please contact the Translating and Interpreting Service on 131 450 and ask them to call us on 1800 670 616.