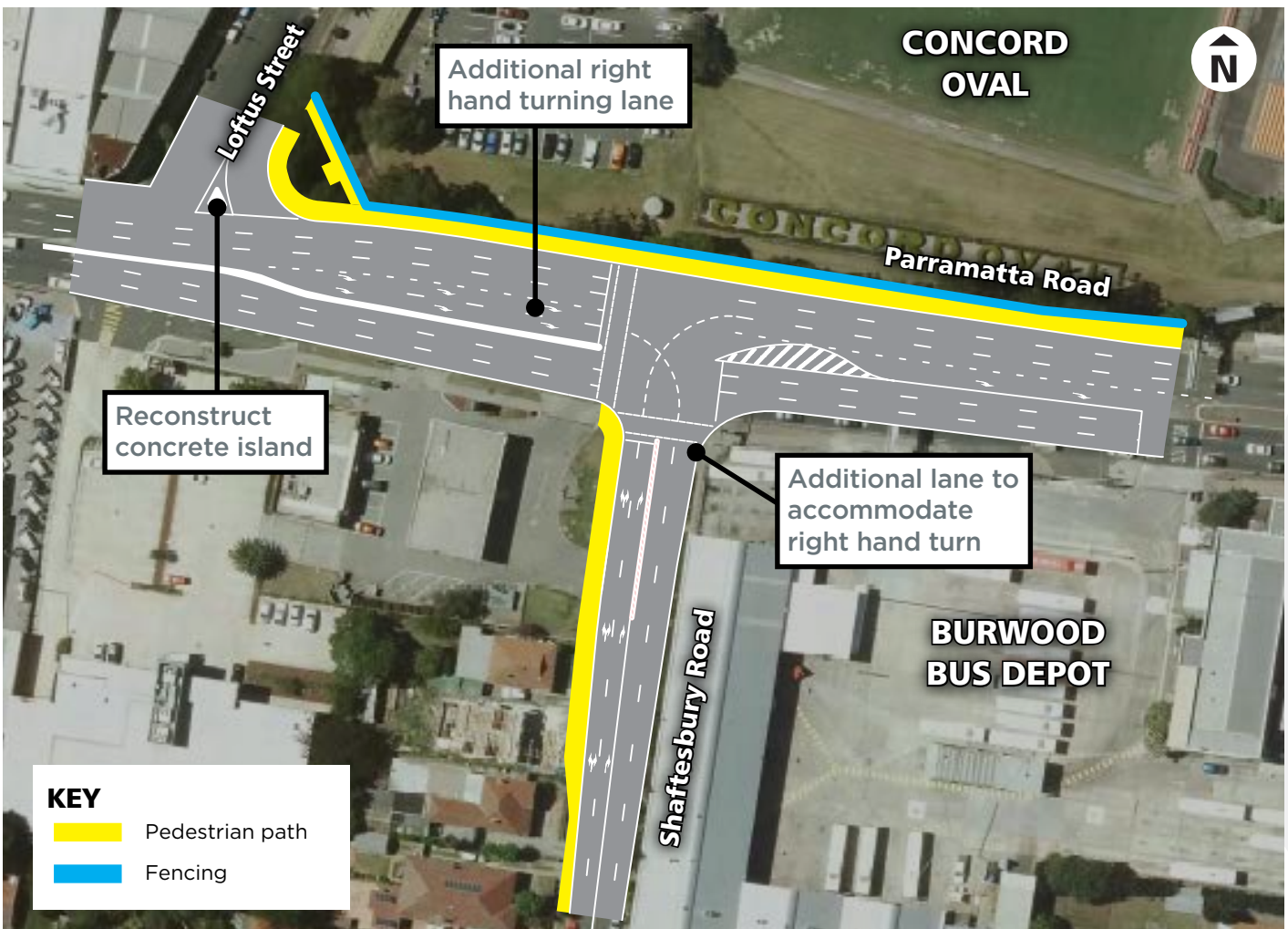


Upgrades on Parramatta Road at Concord

Project update

Roads and Maritime Services | December 2018



Location of work at the intersection of Parramatta Road and Shaftesbury Road, Five Dock

The NSW Government is investing in this work to ease congestion and improve travel time on Sydney's key corridors.

Roads and Maritime Services will be carrying out improvements at the intersection of Parramatta Road and Shaftesbury Road, Concord.

We will provide an additional right turn lane from Parramatta Road into Shaftesbury Road and rebuild the pedestrian paths and fencing at the widened intersection.

This upgrade will allow more vehicles to queue in the right turn bays without overflowing into through lanes, reducing congestion and improving travel times.

Key benefits

- Improve traffic flow at the intersection
- Improve road safety and help reduce the number of crashes
- Ease congestion and improve travel time reliability.

What will the work include?

The main project work will include:

- Providing an additional eastbound right turn lane on Parramatta Road into Shaftesbury Road
- Widening Parramatta Road on the northern side and Shaftesbury Road on the western side for the additional right turn lane
- Realigning the footpath on Parramatta Road and Shaftesbury Road
- Removing about 27 trees along the front of Concord Oval with replacement landscaping and replanting
- Removing about 40 metres of southbound parking on the eastern side of Shaftesbury Road to allow traffic to merge into one lane after turning right from Parramatta Road
- Installing a stop sign and stop line at the corner of Loftus Street and Parramatta Road
- Upgrading traffic lights and drainage, relocating services and replacing asphalt and lane markings.

Our planned work schedule

We plan to be on site for up to **five nights a week** and up to **six days a week**, between **February 2019** and **March 2020**, weather permitting.

Our day work hours will be between **7am** and **6pm** from **Monday to Friday** and **8am** to **1pm** on **Saturday**. Our night work hours will be between **8pm** and **5am** from **Sunday to Friday**.

We will not be working on public holidays.

Comment on the work schedule

We are seeking feedback on our proposal to complete construction on these improvements by working up to five nights a week and six days a week.

The proposed schedule will allow us to complete the work as quickly as possible to minimise disruption for residents, business and road users.

We welcome your comments on the proposed schedule by **Monday 17 December 2018** at **5pm**.

You can provide your comments by:

- **Calling** our Project Manager, Henry Mi, on 1800 572 004 during business hours
- **Emailing** pinchpoint@rms.nsw.gov.au
- **Writing** to Pinchpoints Team, Roads and Maritime Services, PO Box 973, Parramatta, NSW, 2124.

How will the work affect you?

Our work may be noisy at times but we will do everything we can to minimise its impact, including completing noisier tasks by **midnight**.

Traffic changes

There will be temporary traffic changes during our work hours to ensure the work zone is safe.

Lane closures may be in place and may affect travel times. Please keep to speed limits and follow signs and traffic controllers' directions.

For the latest traffic updates, you can call **132 701**, visit livetraffic.com or download the **Live Traffic NSW App**.

Contact us

If you have any questions, please contact our project manager, Henry Mi, on:

 1800 572 004 (during business hours)

 pinchpoint@rms.nsw.gov.au

 rms.nsw.gov.au



Translating and Interpreting Service

If you need an interpreter, please call the Translating and Interpreting Service (TIS National) on **131 450** and ask them to telephone Roads and Maritime Services on 1800 572 004

Arabic

إذا كنتم بحاجة إلى مترجم، الرجاء الاتصال بخدمة الترجمة الخطية والشفهية (TIS National) على الرقم 1800 572 004، والطلب منهم الاتصال بوكالتكم Roads and Maritime Services على الرقم 1800 572 004

Cantonese

若你需要口譯員，請致電 **131 450** 聯絡翻譯和口譯服務署 (TIS National)，要求他們致電 1800 572 004 聯絡 Roads and Maritime Services。

Mandarin

如果你需要口译员，请致电 **131 450** 联系翻译和口译服务署 (TIS National)，要求他们致电 1800 572 004 联系 Roads and Maritime Services。

Greek

Αν χρειάζεστε διερμηνέα, παρακαλείστε να τηλεφωνήσετε στην Υπηρεσία Μετάφρασης και Διερμηνείας (Εθνική Υπηρεσία ΤΙΣ) στο **131 450** και ζητήστε να τηλεφωνήσουν Roads and Maritime Services στο 1800 572 004

Italian

Se desiderate l'assistenza di un interprete, prego telefonare al Servizio Interpreti e Traduttori (TIS National) al **131 450** chiedendo di contattare Roads and Maritime Services al 1800 572 004

Korean

통역사가 필요하시면 번역통역서비스 (TIS National) 에 **131 450** 으로 연락하여 이들에게 1800 572 004 번으로 Roads and Maritime Services 에 전화하도록 요청하십시오.

Vietnamese

Nếu cần thông ngôn viên, xin quý vị gọi cho Dịch Vụ Thông Phiên Dịch (TIS Toàn Quốc) qua số **131 450** và nhờ họ gọi cho Roads and Maritime Services qua số 1800 572 004



December 2018

Privacy Roads and Maritime Services ("RMS") is subject to the Privacy and Personal Information Protection Act 1998 ("PPIP Act") which requires that we comply with the Information Privacy Principles set out in the PPIP Act. All information in correspondence is collected for the sole purpose of assisting in the delivery this project. The information received, including names and addresses of respondents, may be published in subsequent documents unless a clear indication is given in the correspondence that all or part of that information is not to be published. Otherwise RMS will only disclose your personal information, without your consent, if authorised by the law. Your personal information will be held by RMS at 266 King St Newcastle NSW 2300. You have the right to access and correct the information if you believe that it is incorrect.