

## Investigation work near Heathcote Road, Holsworthy, from Saturday 17 February

**The NSW Government is proposing to upgrade a two-kilometre section of Heathcote Road to reduce traffic congestion, improve safety, meet future traffic volumes and improve pedestrian and cyclist connectivity.**

Roads and Maritime Services will carry out investigation work as part of the detailed design for the Heathcote Road proposal. This investigation work will include testing the existing ground conditions and identifying the location of utilities, such as water, gas, electricity and telecommunications infrastructure.

The work requires four boreholes to be drilled near the Heathcote Road bridge over the railway line, and potholing to the east and west of the railway line. Specialist field staff will carry identification at all times and take necessary safety precautions. Roads and Maritime will carry out this work during the scheduled rail shutdown on **Saturday 17 February** and **Sunday 18 February**.

A map is included below to show the work area. Information gathered from this investigation will help Roads and Maritime to develop the detailed design for the proposed Heathcote Road upgrade.

### Works schedule

Our work hours will be from **7am** on **Saturday 17 February** to **6pm** on **Sunday 18 February** continuously, weather permitting, with work to coincide with the scheduled rail maintenance shutdown.

This is the first stage of investigations needed for the detailed design. Further investigation work will be required along the two-kilometre corridor during 2018. Roads and Maritime will notify the community of further work once work schedules are determined.

### How will the work affect you?

Our work may be noisy at times but we will do everything we can to minimise its impact, including completing the noisier activities before 11pm and providing respite gaps between drilling work.

### Traffic changes

This work is not expected to affect traffic movements or require any changes to traffic conditions. For the latest traffic updates, you can call 132 701, visit [livetraffic.com](http://livetraffic.com) or download the Live Traffic NSW App.

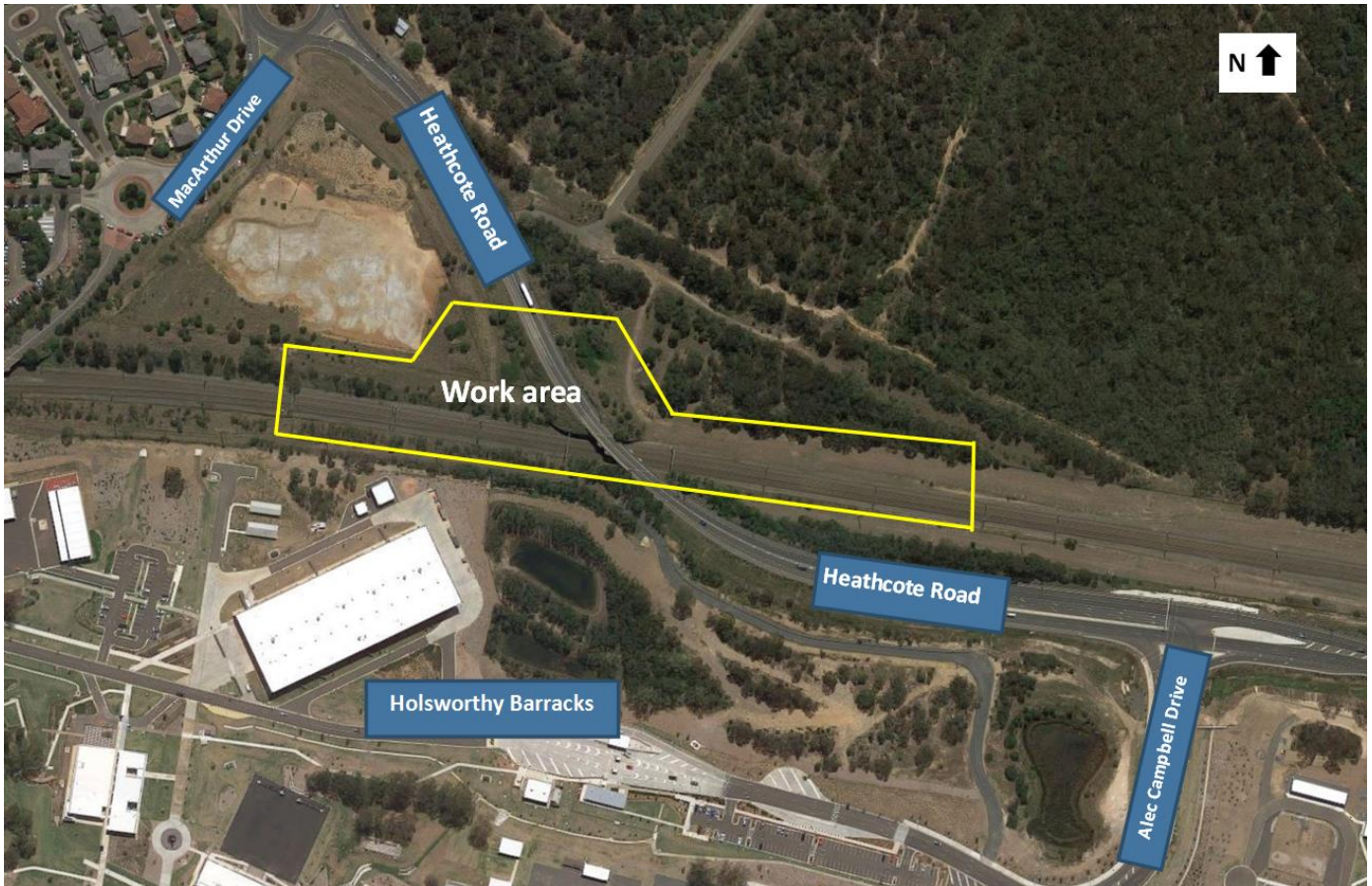
### Contact

If you have any questions, please contact our delivery partner SMEC Australia on 1800 749 119 or email [HeathcoteRoadUpgrade@rms.nsw.gov.au](mailto:HeathcoteRoadUpgrade@rms.nsw.gov.au). For more information on our projects, visit [rms.nsw.gov.au](http://rms.nsw.gov.au).

Thank you for your patience during this important work.

---

## Location of work area



### Translating and Interpreting Service

If you need an interpreter, please call the Translating and Interpreting Service (TIS National) on **131 450** and ask them to telephone Roads and Maritime Services on 1800 749 119

#### Arabic

إذا كنتم بحاجة إلى مترجم، الرجاء الاتصال بخدمة الترجمة الخطية والشفهية (TIS National) على الرقم **131 450**، والطلب منهم الاتصال بوكالتكم Roads and Maritime Services على الرقم 1800 749 119

#### Cantonese

若你需要口譯員，請致電 **131 450** 聯絡翻譯和口譯服務署 (TIS National)，要求他們致電 1800 749 119 聯絡 Roads and Maritime Services。

#### Mandarin

如果你需要口译员，请致电 **131 450** 联系翻译和口译服务署 (TIS National)，要求他们致电 1800 749 119 联系 Roads and Maritime Services。

#### Greek

Αν χρειάζεστε διερμηνέα, παρακαλείστε να τηλεφωνήσετε στην Υπηρεσία Μετάφρασης και Διερμηνείας (Εθνική Υπηρεσία TIS) στο **131 450** και ζητήστε να τηλεφωνήσουν Roads and Maritime Services στο 1800 749 119

#### Italian

Se desiderate l'assistenza di un interprete, prego telefonare al Servizio Interpreti e Traduttori (TIS National) al **131 450** chiedendo di contattare Roads and Maritime Services al 1800 749 119

#### Korean

통역사가 필요하시면 번역통역서비스 (TIS National) 에 **131 450** 으로 연락하여 이들에게 1800 749 119 번으로 Roads and Maritime Services 에 전화하도록 요청하십시오.

#### Vietnamese

Nếu cần thông ngôn viên, xin quý vị gọi cho Dịch Vụ Thông Phiên Dịch (TIS Toàn Quốc) qua số **131 450** và nhờ họ gọi cho Roads and Maritime Services qua số 1800 749 119

