

# Windsor Bridge replacement project

## Temporary traffic changes from Monday 25 March

As part of the Windsor Bridge replacement project, Roads and Maritime Services will implement some temporary traffic changes in the area around George Street and Bridge Street, Windsor, from **Monday 25 March**.

The work will include:

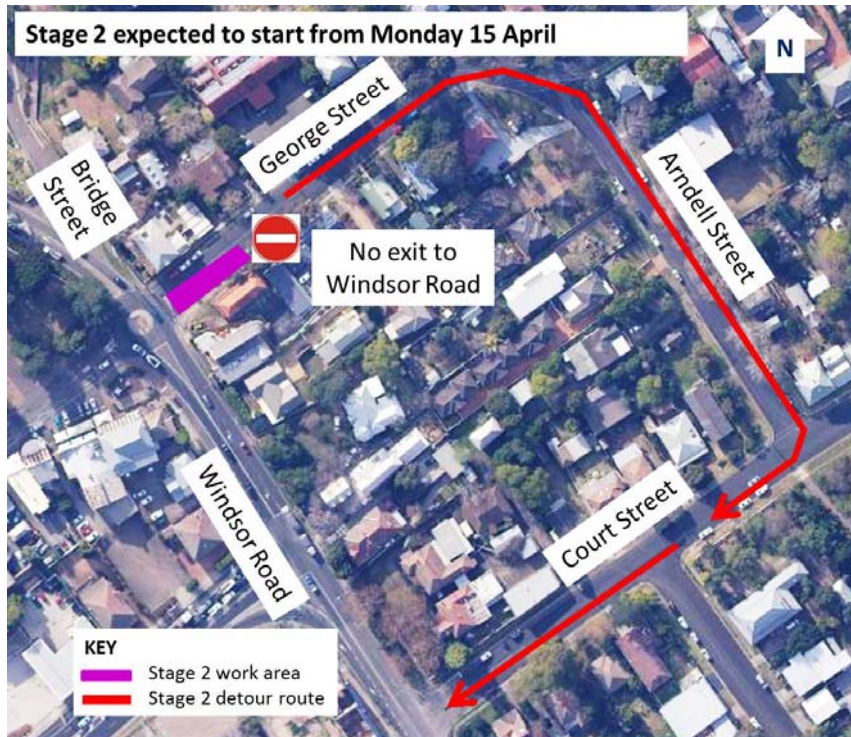
- closing a lane on George Street
- installing concrete barriers
- detouring traffic
- line marking
- archaeological investigations
- installing traffic lights
- constructing new kerb and gutter
- paving and asphaltting.

The traffic changes are required to allow us to safely carry out early preparation work for changes to the George and Bridge Streets intersection as part of the project. We will carry out this work in two stages.

**Stage 1** will involve closing the eastbound lane on George Street, to the east of the roundabout. Detours will be in place via Court Street and Arndell Street. During this work the **No Left Turn between 4pm and 6pm** from Windsor Road into Court Street will not be in place. Stage 1 will start on **Monday 25 March** for up to **3 weeks**, weather permitting and dependent on any archaeological findings.



**Stage 2** will involve closing the westbound lane on George Street. There will be no exit from George Street to Windsor Road, and detours will be in place via Arndell Street and Court Street. This is expected to start on **Monday 15 April** for up to **4 weeks**, weather permitting and dependent on any archaeological findings.



## Our work schedule

This work will start on **Monday 25 March** and take approximately **7 weeks** to complete, weather permitting. We will install concrete barriers and carry out line marking at night between **6pm and 5am Monday to Friday**, for the safety of motorists and workers and to limit the impact to the road network.

All other work will be during standard construction hours, between **7am and 6pm Monday to Friday**, and between **8am and 1pm on Saturday**. There will be no work on Sundays or public holidays.

## How will the work affect you?

There may be some impact to residents during this work, including noise and lighting. We will make every effort to minimise the impact by turning machinery and vehicles off when not in use, directing noisy equipment and lights away from properties, where possible, and limiting the amount of night work.

## Traffic changes

There will be some temporary traffic changes and reduced speed limits in place to ensure the work zone is safe. Traffic controllers will be in place to provide access for local residents and businesses. Please keep to speed limits and follow the direction of signs and traffic controllers. For the latest traffic updates, you can call 132 701, visit [livetraffic.com](http://livetraffic.com) or download the Live Traffic NSW App.

## Contact

If you have any questions about construction, please contact the Windsor Bridge Project Team on 1800 983 657 during business hours or email [windsorbridge@georgiou.com.au](mailto:windsorbridge@georgiou.com.au).

For more information on the project, visit [rms.nsw.gov.au/windsorbridge](http://rms.nsw.gov.au/windsorbridge). Thank you for your patience during this important work.