

Major traffic changes to the Brushwood Drive on-ramp, Alfords Point from 9pm on Monday 7 November

The NSW Government is funding this \$40 million project to improve safety and traffic flow on Alfords Point Road between Georges River and Brushwood Drive.

Roads and Maritime Services is continuing to deliver this important project. As part of this work, we need to permanently change traffic arrangements at the Brushwood Drive on-ramp from **9pm on Monday 7 November**.

Changes to the Brushwood Drive on-ramp

Traffic arrangements at the Brushwood Drive on-ramp will change starting from **9pm on Monday 7 November**, weather permitting. This will be a permanent change.

Currently, the existing intersection at the Brushwood Drive on-ramp requires motorists travelling straight from the western end of Brushwood Drive over the bridge to give way to motorists turning right onto Brushwood Drive on-ramp to merge onto the Alfords Point Road. This creates heavy congestion along Brushwood Drive. Please refer to Image A.

Traffic conditions will be changed to allow right of way for motorists travelling from the western end of Brushwood Drive. Traffic travelling from the eastern end of Brushwood Drive and turning right onto the on-ramp will now give way to traffic travelling straight ahead from the western end of Brushwood Drive. Please refer to Image B.

Vehicles joining Alfords Point Road from the Brushwood Drive on-ramp will still be required to merge around 60 metres down the on-ramp.

To prepare for the switch, we will carry out **three shifts of night work** to install new give way signage and line marking between **Monday 24 October** and **Friday 28 October**, weather permitting. Our working hours will be from **7pm to 5am**.

Electronic message signs and yellow, road work advisory signs will be placed in the vicinity of the work site to notify motorists of the upcoming changes to the Brushwood Drive on-ramp before the permanent change.

New heavy vehicle inspection bay

Roads and Maritime will carry out asphaltting as part of building the new heavy vehicle inspection bay, on the southbound carriageway of Alfords Point Road, beneath the Old Illawarra Road Bridge. The work will take up to **three shifts of night work** to complete between **Monday 24 October** and **Friday 28 October**, weather permitting. Our working hours will be from **7pm to 5am**.

How will the work affect you?

There will be some noise associated with this work. We will make every effort to minimise noise by arranging the work in stages at different locations across this period. Every effort will also be made to focus the light only on the working area, however there is likely to be some spill-over of light into some nearby residences.

Traffic changes

There will be some temporary traffic changes to make sure the work zone is safe and may affect travel times. Please keep to speed limits and follow the direction of traffic controllers and signs. For the latest traffic updates, you can call 132 701, visit livetraffic.com or download the Live Traffic NSW App.

Contact

If you have any questions, please call our Project Manager Ken Vo on 0407 900 287 or email alfordspoint@rms.nsw.gov.au For more information on our projects, visit rms.nsw.gov.au. Thank you for your patience during this important work.

Image A: Current traffic conditions at the Brushwood Drive on-ramp

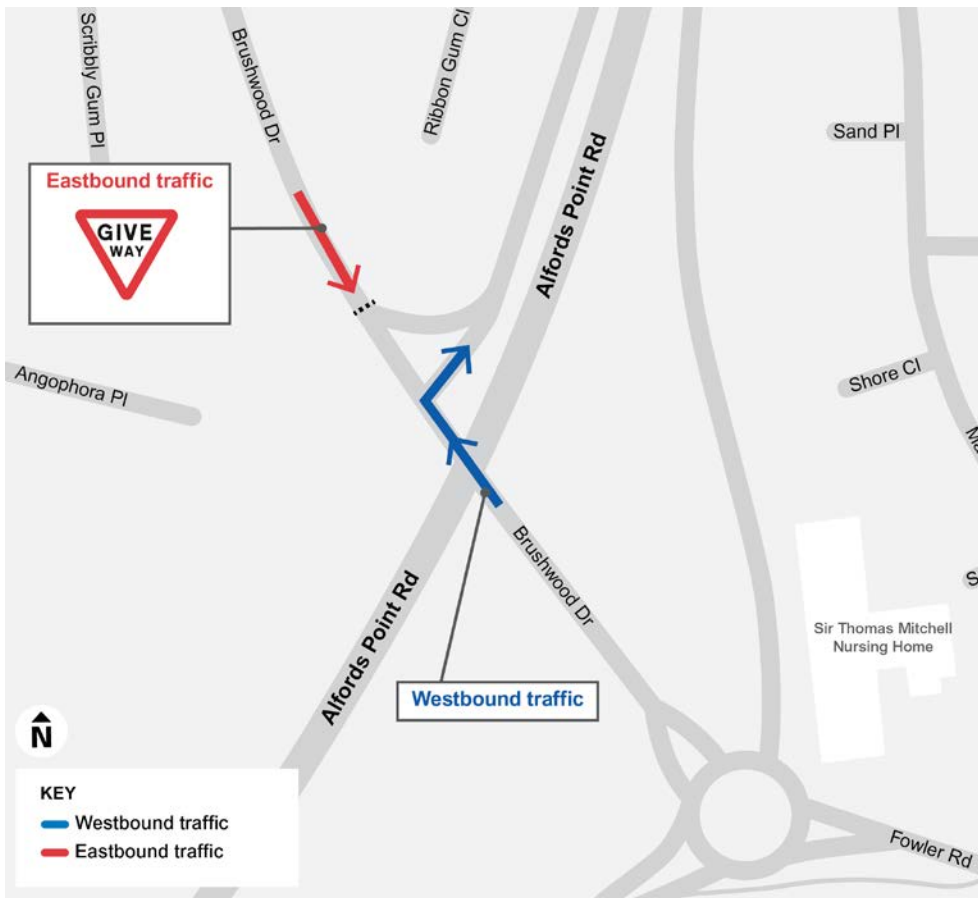


Image B: New traffic conditions at the Brushwood Drive on-ramp from 9pm Monday 7 November

