

Traffic changes to the Brushwood Drive on-ramp, Alfords Point from Tuesday 10 October

The NSW Government is funding this \$40 million project to improve safety and traffic flow on Alfords Point Road between Georges River and Brushwood Drive

Roads and Maritime Services is continuing to deliver this important project. As part of this work, we implement changed traffic arrangements at the Brushwood Drive on-ramp from **Tuesday 10 October**.

Changes to Brushwood Drive on-ramp

Traffic arrangements at the Brushwood Drive on-ramp will change starting from **Tuesday 10 October**, weather permitting.

Currently, the existing intersection at the Brushwood Drive on-ramp requires motorists travelling straight from the western end of Brushwood Drive over the bridge to give way to motorists turning right onto Brushwood Drive on-ramp to merge onto the Alfords Point Road. This creates heavy congestion along Brushwood Drive. *Please refer to Image A.*

Traffic conditions will be changed to allow **right-of-way for motorists travelling from the western end of Brushwood Drive**. Traffic travelling from the eastern end of Brushwood Drive and turning right onto the on-ramp will now give way to traffic travelling straight ahead from the western end of Brushwood Drive. *Please refer to Image B.*

Vehicles joining Alfords Point Road from the Brushwood Drive on-ramp will use the new third lane of Alfords Point Road. The new three lanes run from Brushwood Drive all the way to the George's River Bridge.

Night work

To prepare for the switch, we will carry out **one shift of night work** to change the give way signage and line marking on **Monday 9 October**, weather permitting. Our working hours will be from **7pm to 5am**.

Electronic message signs and yellow, road work advisory signs will be placed in the vicinity of the work site to notify motorists of the upcoming changes to the Brushwood Drive on-ramp before the change.

How will the work affect you?

There will be some noise associated with this work. We will make every effort to minimise noise where appropriate and ensure equipment and vehicles are turned off when not in use. Every effort will also be made to focus the light only on the working area, however there may be some spill-over of light into nearby residences.

Traffic changes

Temporary traffic changes and land closures will be in place to ensure the work zone is safe for motorists and workers. The on-ramp onto Brushwood Drive will be closed during the night work, with the detour via Menai in place.

We have provided a map to show the location of the work and the Brushwood Drive on-ramp detour.

Please keep to speed limits and follow the direction of traffic controllers and signs. Please plan your journeys to allow for possible delays. For the latest traffic updates, you can call 132 701, visit livetraffic.com or download the Live Traffic NSW App.

Image A: Current traffic conditions at the Brushwood Drive on-ramp

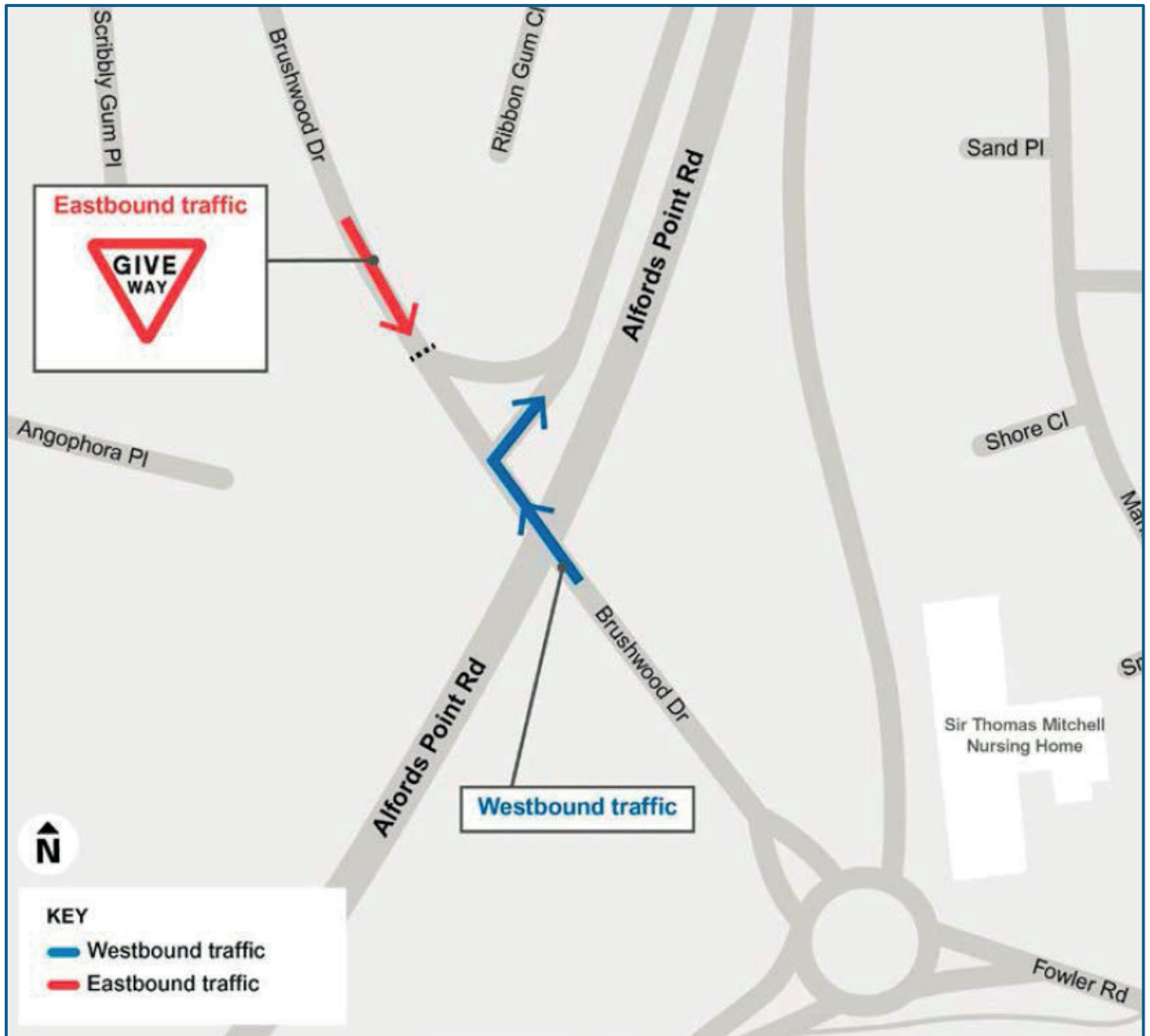
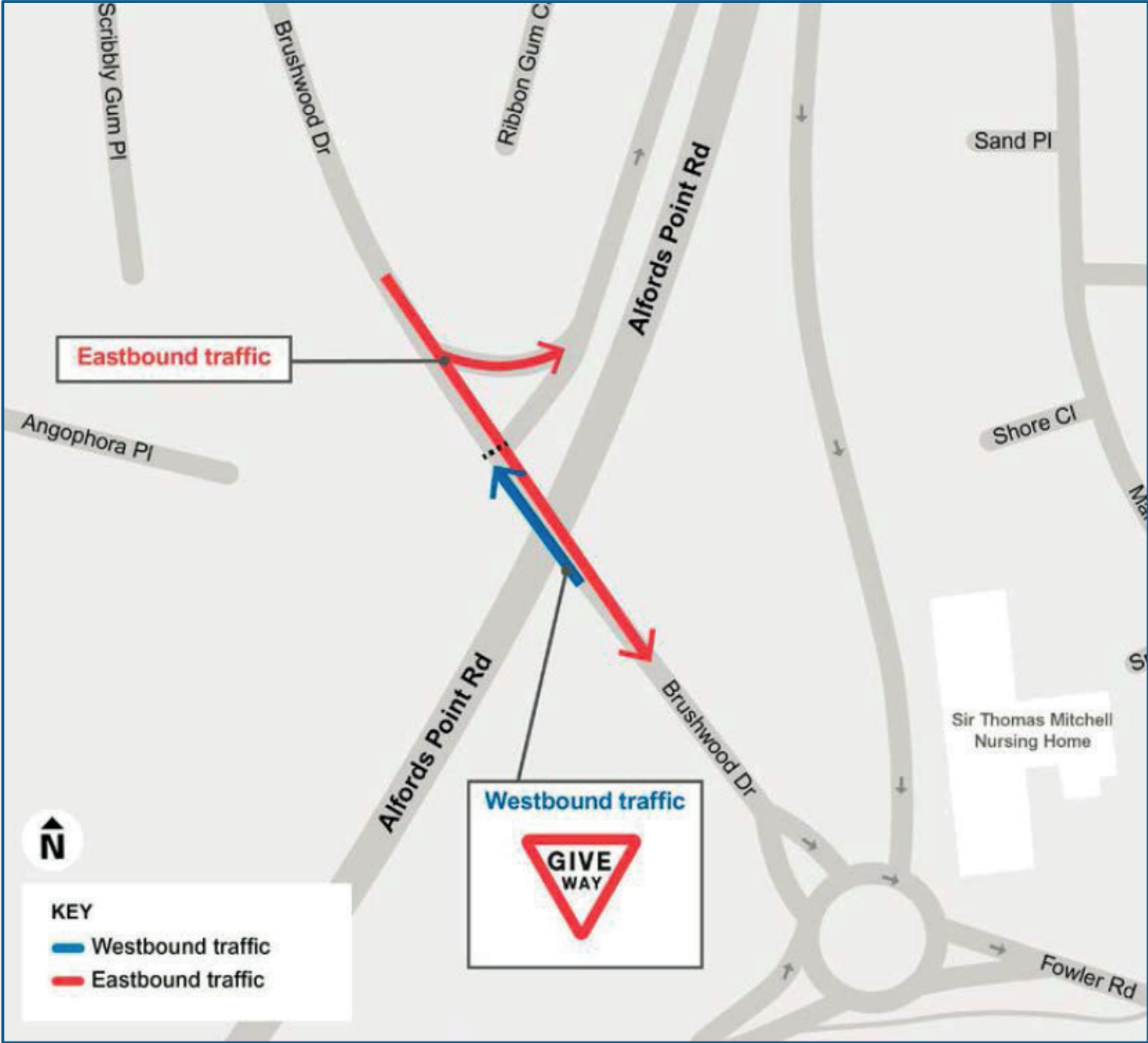


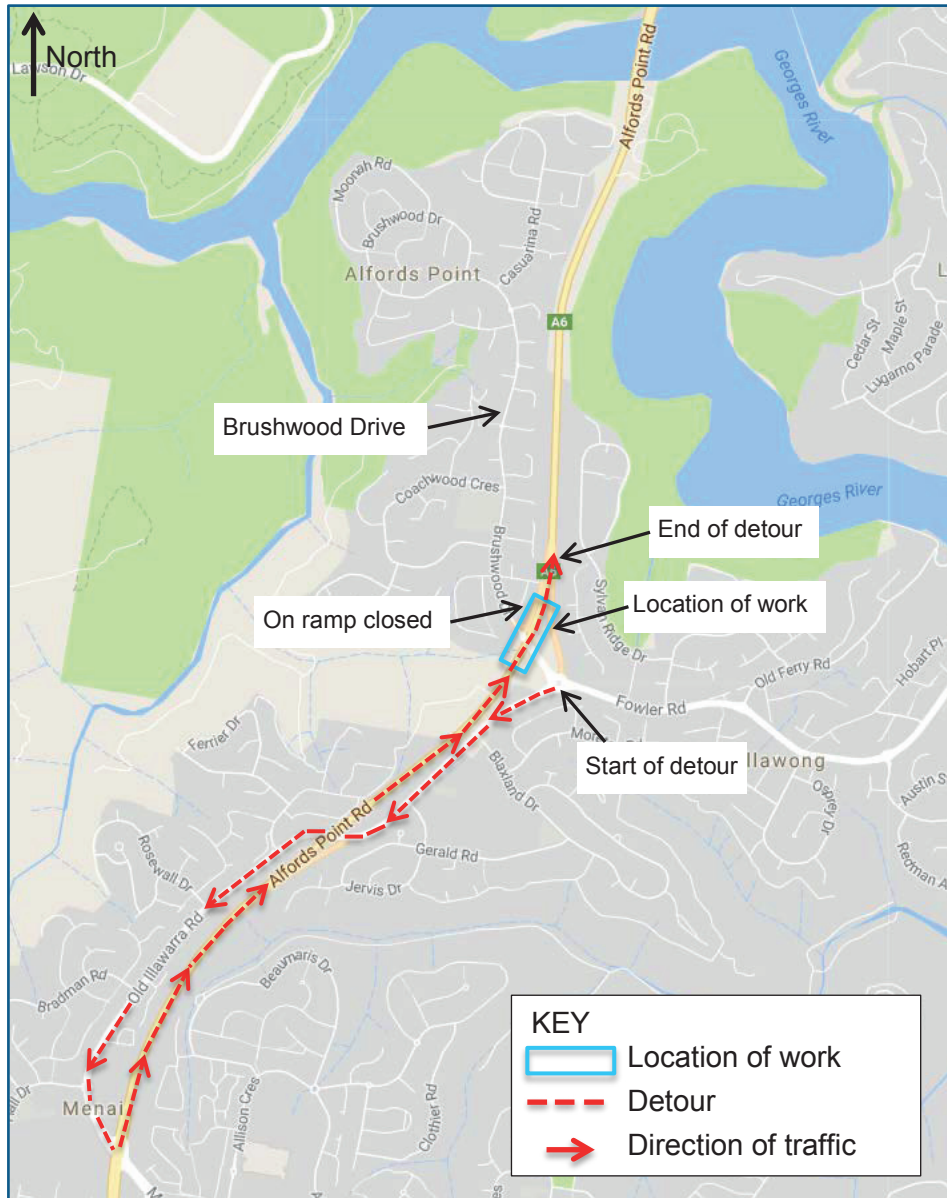
Image B: New traffic conditions at the Brushwood Drive on-ramp from Tuesday 10 October



Contact

If you have any questions, please call our Project Manager Ken Vo on 0407 900 287 or email alfordspoint@rms.nsw.gov.au. For more information on our projects, visit rms.nsw.gov.au.

Thank you for your patience during this important work



Translating and Interpreting Service

If you need an interpreter, please call the Translating and Interpreting Service (TIS National) on **131 450** and ask them to telephone Roads and Maritime Services on 0407 900 287

Arabic

إذا كنتم بحاجة إلى مترجم، الرجاء الاتصال بخدمة الترجمة الخطية والشفهية (TIS National) على الرقم 0407 900 287، والطلب منهم الاتصال بوكالتكم **131 450** على الرقم 0407 900 287

Cantonese

若你需要口譯員，請致電 **131 450** 聯絡翻譯和口譯服務署 (TIS National)，要求他們致電 0407 900 287 聯絡 Roads and Maritime Services。

Mandarin

如果您需要口译员，请致电 **131 450** 联系翻译和口译服务署 (TIS National)，要求他们致电 0407 900 287 联系 Roads and Maritime Services。

Greek

Αν χρειάζεστε διερμηνέα, παρακαλείστε να τηλεφωνήσετε στην Υπηρεσία Μετάφρασης και Διερμηνείας (Εθνική Υπηρεσία ΤΙΣ) στο **131 450** και ζητήστε να τηλεφωνήσουν Roads and Maritime Services στο 0407 900 287

Italian

Se desiderate l'assistenza di un interprete, prego telefonare al Servizio Interpreti e Traduttori (TIS National) al **131 450** chiedendo di contattare Roads and Maritime Services al 0407 900 287

Korean

통역사가 필요하시면 번역통역서비스 (TIS National) 에 **131 450** 으로 연락하여 이들에게 0407 900 287 번으로 Roads and Maritime Services 에 전화하도록 요청하십시오.

Vietnamese

Nếu cần thông ngôn viên, xin quý vị gọi cho Dịch Vụ Thông Phiên Dịch (TIS Toàn Quốc) qua số **131 450** và nhờ họ gọi cho Roads and Maritime Services qua số 0407 900 287