

Proposed out of hours concrete bridge segment production from 18 May 2020 to late 2020

Transport for NSW is continuing concrete segment production for construction of the Batemans Bay Bridge replacement.

What are we doing?

We are pouring concrete bridge segments at an existing pre-cast facility south of Mogo for the construction of the Batemans Bay Bridge replacement.

We are extending out of hours production at the pre-cast facility to **24 hours per day from Mondays to Saturdays (inclusive) from 18 May 2020 to late 2020**, weather permitting.

Work for each bridge segment includes preparing steel moulds before concrete is poured. Concrete pouring is carried out using a vibration method. Bridge segments are then removed from moulds the following day. Each pour includes concrete truck movements to and from the facility, as well as forklifts, cranes and light vehicle movements within the facility.

Out of hours work

Standard construction work hours have been extended under the Environmental Planning and Assessment Order 2020 to **Mondays to Sundays (including public holidays) from 7am to 6pm** to support the construction industry during the COVID-19 pandemic. All construction hours are weather permitting.

In order to complete segment production sooner, we are planning for out of hours work to be extended for segment production **24 hours per day from 12-midnight Sunday nights to 12-midnight Saturday nights**. Bushfire impacts on the pre-cast facility site earlier this year together with the implementation of social distancing rules and other safety measures during the COVID 19 pandemic, have slowed segment production progress.

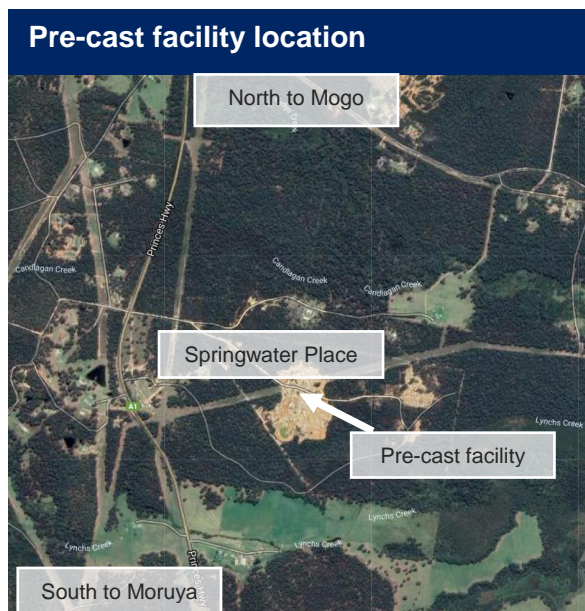
Operating hours and production activities during the day on **Sunday** will remain within extended standard construction hours of **7am to 6pm**, with no concrete pouring taking place before 9am on Sundays.

The planned works will generate noise and may result in residents being able to hear the operations in the evening and sometimes at night. We do not expect noise levels to be overly intrusive on your amenity.

If you require more information or if you wish to register a complaint during this work, you can contact us via phone on **1800 870 119** which will be staffed during all construction hours.

A breakdown of activities planned during out of hours work is available below.

Day	Time	Activity
Monday to Saturday	24 hours per day	<ul style="list-style-type: none"> Concrete pours, which includes vibration of the poured concrete - the concrete mix has been designed to include a special additive to minimise the amount of vibration required. Stripping of previously poured segments which consists of surveying and removal of various elements of the segment mould. Finishing the poured concrete, applying curing compound, covering the segments with tarps and cleaning up after the pour. Handling and storage of completed segments. Loading trucks with pre-cast segments for transport via the Princes Highway into Batemans Bay during approved transport periods.
Sunday	7am to 6pm	<ul style="list-style-type: none"> From 7am - stripping of previously poured segments which consists of surveying and removal of various elements of the segment mould. From 9am - a new segment may be poured which includes vibration of the poured concrete. Finishing the poured concrete, applying curing compound, covering the segments with tarps and cleaning up after the pour. Handling and laydown of completed segments. Loading trucks with pre-cast segments for transport via road during approved transport periods.



For more information on the project or if you have any questions or complaints, please contact our project team

 1800 870 119
 BatemansBayBridge@JHG.com.au
 rms.nsw.gov.au/BatemansBayBridge


 If you need help understanding this information, please contact the Translating and Interpreting Service on 131 450 and ask them to call us on 1800 870 119.