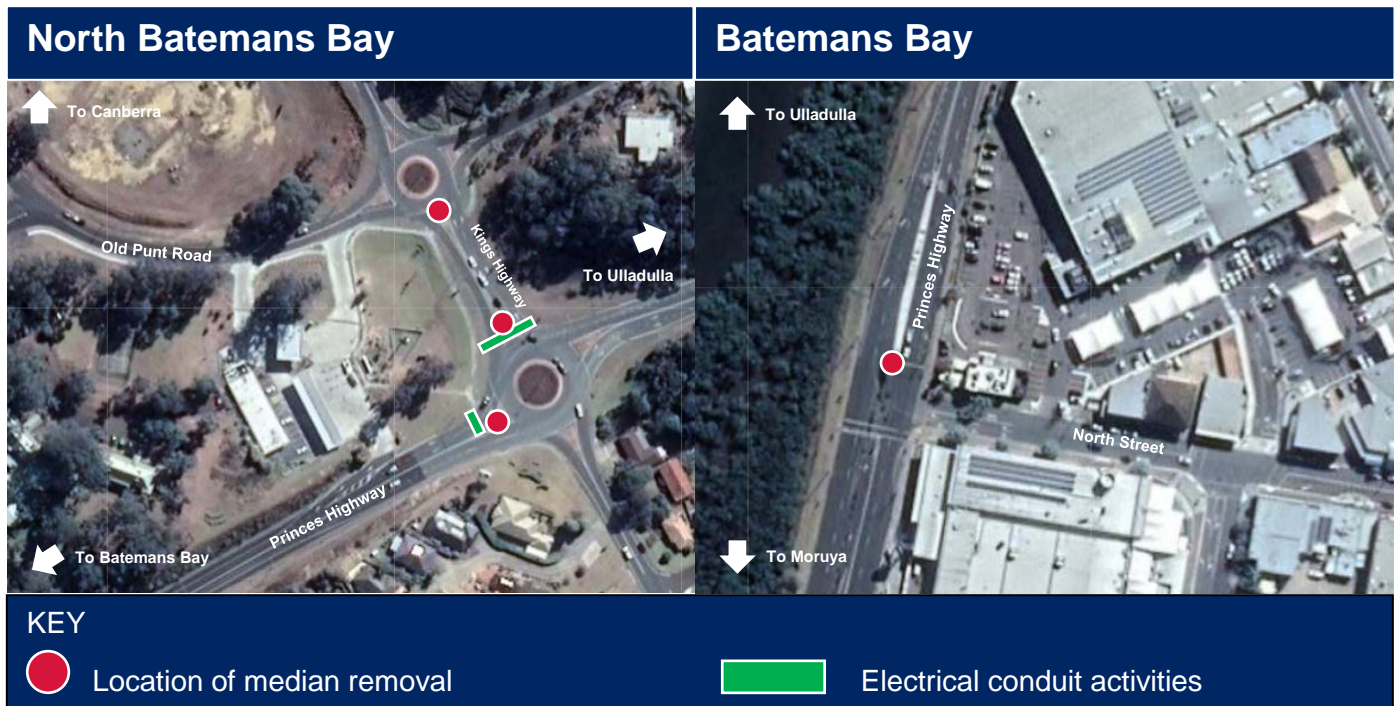


Night work planned to remove medians and carry out electrical work on Princes and Kings Highways at Batemans Bay

Roads and Maritime Services will carry out night work on 20 and 21 November to remove medians as part of the Batemans Bay Bridge replacement project.



We will be working on the Princes and Kings Highways for **two nights** on **Wednesday 20 November** and **Thursday 21 November 2019** between **7pm** and **7am**, weather permitting.

What are we doing?

We are removing medians at three different locations:

- the Kings Highway near the Princes Highway intersection in North Batemans Bay
- the Princes Highway just south of the Kings Highway intersection in North Batemans Bay
- the Princes Highway just north of the North Street intersection in Batemans Bay

This will involve digging and removal of material and include use of equipment such as excavators, trucks, hand tools and light vehicles.

We will also be carrying out electrical conduit activities for the proposed traffic signals at the Kings Highway and Princes Highway roundabout and traffic signal modifications at the Princes Hwy and North Street Intersection.

We are undertaking this work out of hours to reduce impacts to motorists and the community.

Standard construction work hours are between 7am and 6pm Monday to Friday, and between 8am and 1pm on Saturday.

What you need to know

There will be noise, lighting and traffic impacts associated with this work. Some households will be highly impacted and we will be contacting those people in person. To reduce the impact to the broader community and where possible we will complete noisier activities before **11pm** and work further away from residences and businesses after midnight to reduce the impact. We will also switch off machinery and vehicles when not in use.

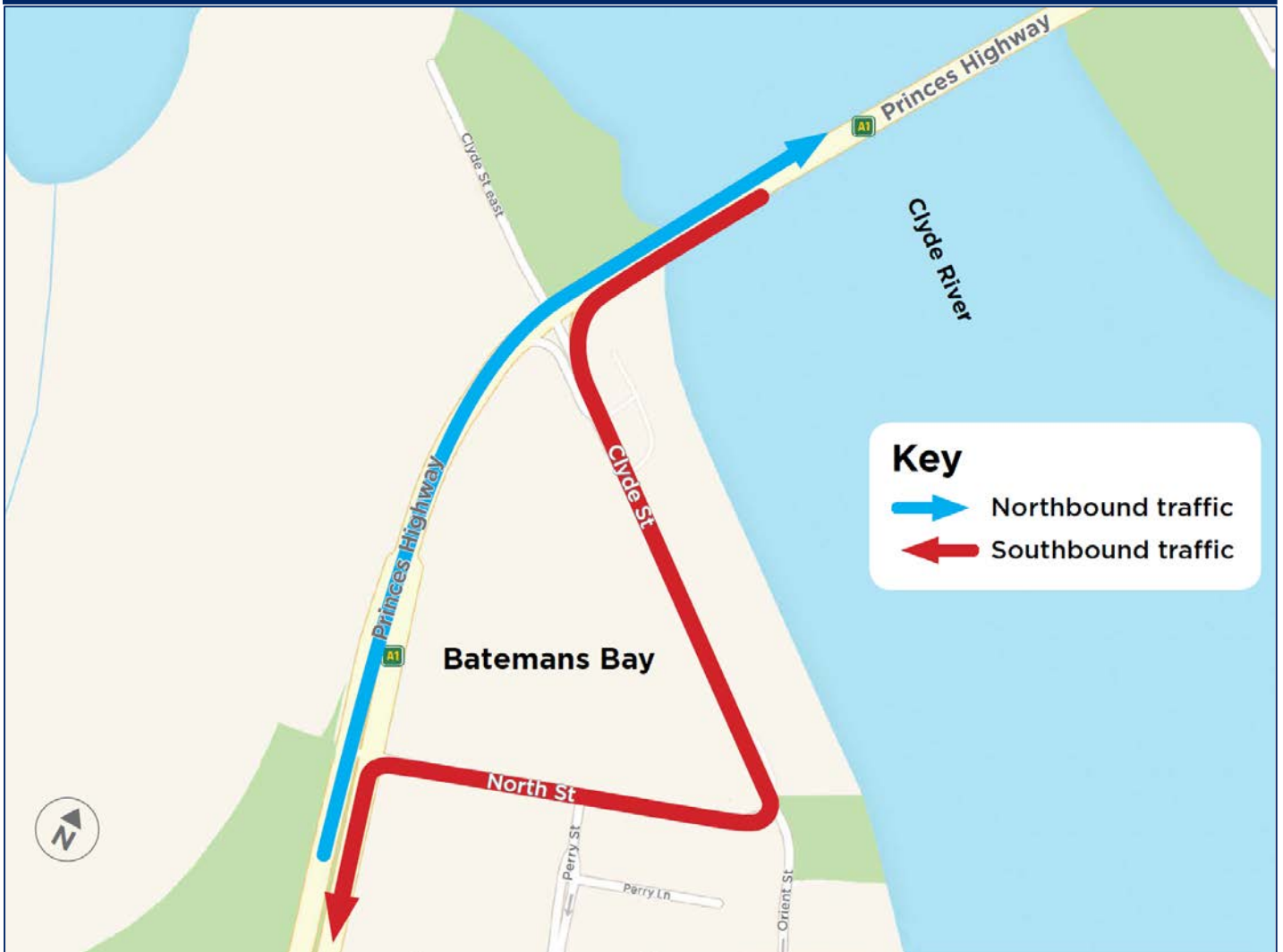
Motorists are advised that traffic delays will impact motorists using the Kings Highway from the Old Punt Road intersection to the Princes Highway, and the Princes Highway from the Kings Highway intersection to North Street.

On the night of the 21 November from 7pm, southbound detours will be in place for light vehicles via Clyde Street and North Street, and northbound traffic will remain on the Princes Highway under traffic control.

Traffic control will be in place and motorists are advised to follow the direction of signs and traffic control.

For the latest traffic updates download the Live Traffic NSW App, visit livetraffic.com or call 132 701.

Detour map via Clyde Street, Batemans Bay



For more information

For more information on the project or if you have any questions, please contact our project team



1800 870 119



BatemansBayBridge@JHG.com.au



rms.nsw.gov.au/BatemansBayBridge



If you need help understanding this information, please contact the Translating and Interpreting Service on 131 450 and ask them to call us on 1800 870 119.