

September 2017

## Project update – Overtaking lane Site 6 on Bells Line of Road, Bilpin

### The NSW Government is funding this work to improve road safety and traffic efficiency on Bells Line of Road between Lithgow and Kurrajong Heights.

Roads and Maritime is building a 700 metre eastbound overtaking lane at Site 6 on Bells Line of Road, approximately 100 metres west of Mount Tootie Road and east of Horsfield Road. The benefits include improving traffic flow, reducing traffic delays and improving road safety for all road users.

#### Progress so far and the next stage

We have finished relocating utilities, removing vegetation, setting up a site compound, installing temporary traffic controls and adjusting the westbound lane shoulder.

The next stage of work includes:

- building the 700 metre eastbound overtaking lane and a retaining wall
- drainage improvements.

We expect to finish work in late 2017, weather permitting.

We have included a map to show the location of the work and new bus stop locations.

#### Our work schedule

We will continue to be on site between **Thursday 28 September** and **Friday 22 December**, excluding public holidays, weather permitting. Our work hours will be between **7am** and **6pm** from **Monday to Friday** and between **8am** and **1pm** on **Saturday**.

To minimise disruption to residents, businesses and road users, we will not work more than two nights in any week.

#### How will the work affect you?

Our work may be noisy at times but we will do everything we can to minimise its impact, including staging work in different locations and completing the noisier tasks by **11pm**.

#### Traffic changes

There will again be temporary traffic changes to ensure the work zone is safe.

Lane closures will be in place and may affect travel times. Please keep to speed limits and follow signs and traffic controllers' directions. For the latest traffic updates, you can call 132 701, visit [livetraffic.com](http://livetraffic.com) or download the Live Traffic NSW App.

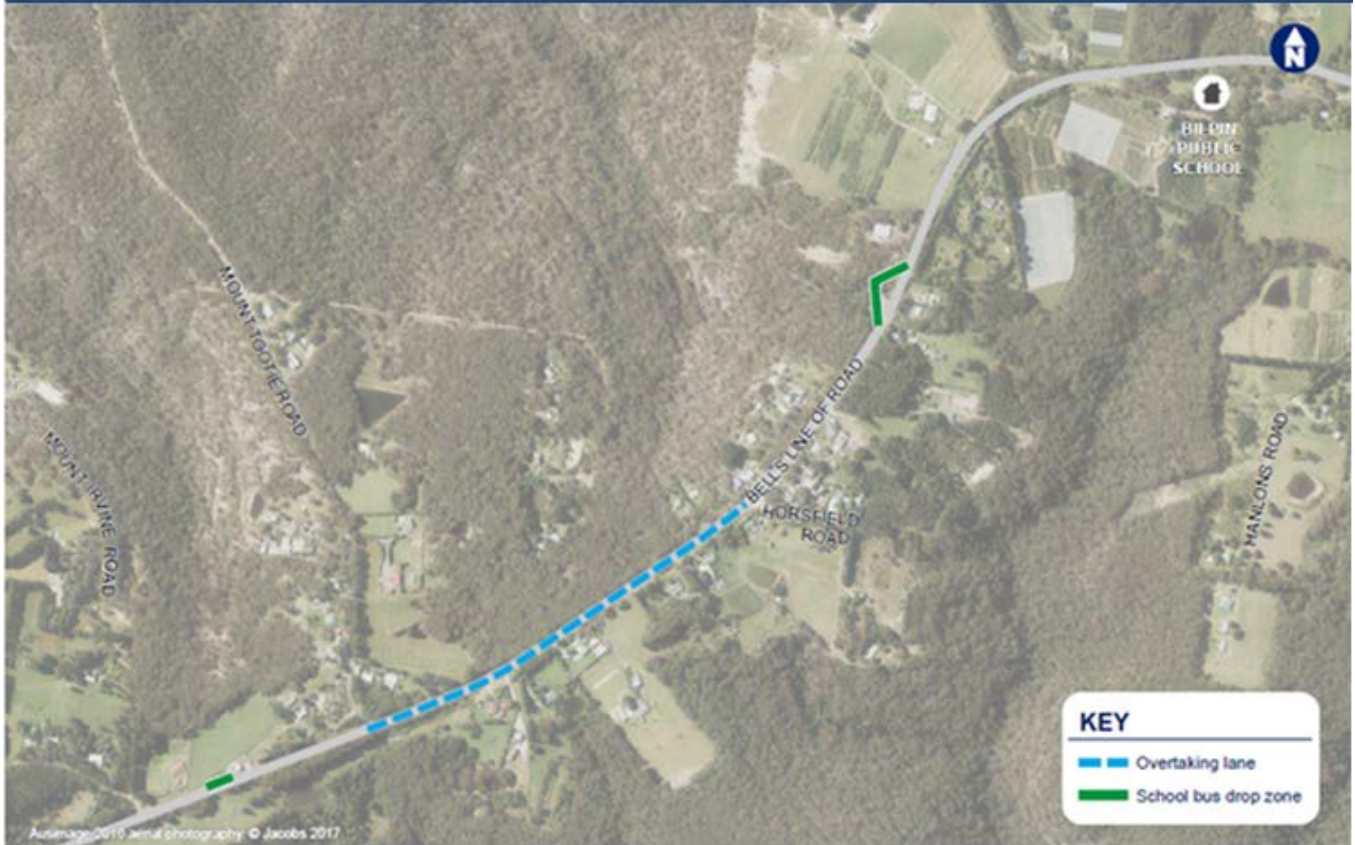
---

## Contact

If you have any questions, please contact our delivery partner, DM Roads, on 1800 332 660 or [enquiries\\_nsw@dmroads.com.au](mailto:enquiries_nsw@dmroads.com.au).

For more information on our projects, visit [rms.nsw.gov.au](http://rms.nsw.gov.au) and search for Bells Line of Road improvement program. Thank you for your patience during this important work.

Location of work on overtaking lane Site 6 and school bus drop off zones, Bells Line of Road, Bilpin.



If you need help understanding this information, please contact the Translating and Interpreting Service on 131 450 and ask them to call us on 1800 332 660.