

## Traffic changes on Princes Highway at Bomaderry

The NSW Government is upgrading the Princes Highway between Berry and Bomaderry to improve safety, increase road capacity and improve traffic flow on the Princes Highway.

### What are we doing?

The next stage of work on the Princes Highway southbound carriageway, from Abernethys Lane to Cambewarra Road, will start in September 2020.

This work will involve:

- constructing kerb and gutters
- laying asphalt
- completing the new highway median
- completing the shared path, driveways and landscaping
- installing street lights.

During the work there will be a number of minor traffic changes along the current temporary service road. Access will be maintained to businesses and properties at all times. A map of the travel path drivers will need to take is provided on the following page.

### How will the work affect you?

The work will start in September and involve both day and night work. Where night work is required, you will be notified in advance.

This stage of work will be complete by December 2020, weather permitting.

There will be temporary traffic changes during our work hours to ensure the work zone is safe. Please keep to speed limits and follow signs and traffic controllers' directions.

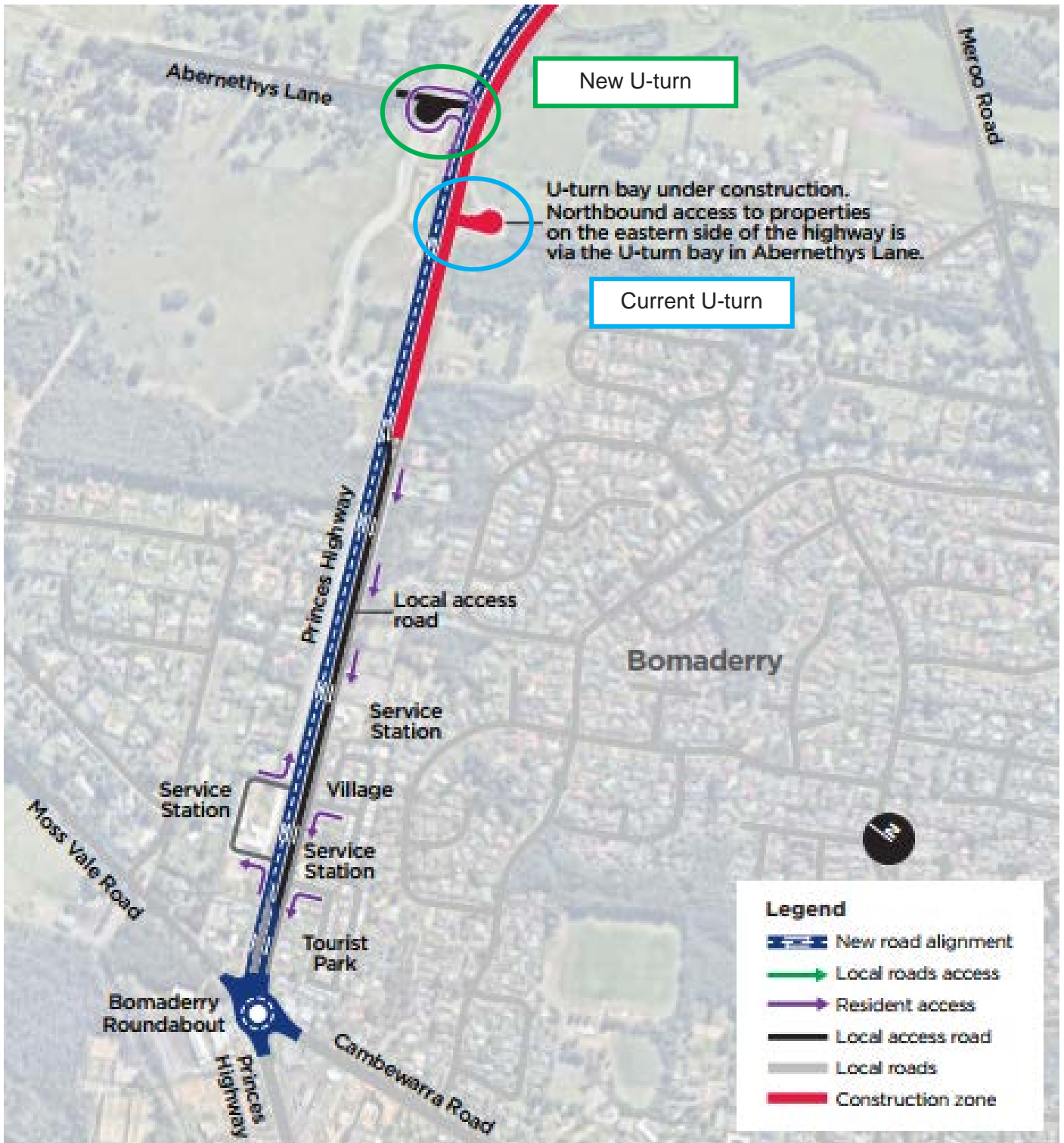
For the latest updates, you can call 132 701, visit [livetraffic.com](http://livetraffic.com) or download the Live Traffic NSW App.

### Contact

If you have any questions, please contact the project team on 1800 506 976 or [BerrytoBomaderryUpgrade@DSWJV.com.au](mailto:BerrytoBomaderryUpgrade@DSWJV.com.au)

For more information on our projects, visit [roads-maritime.transport.nsw.gov.au](http://roads-maritime.transport.nsw.gov.au)

Thank you for your patience during this important work.



If you need help understanding this information, please contact the Translating and Interpreting Service on 131 450 and ask them to call us on 1800 506 976