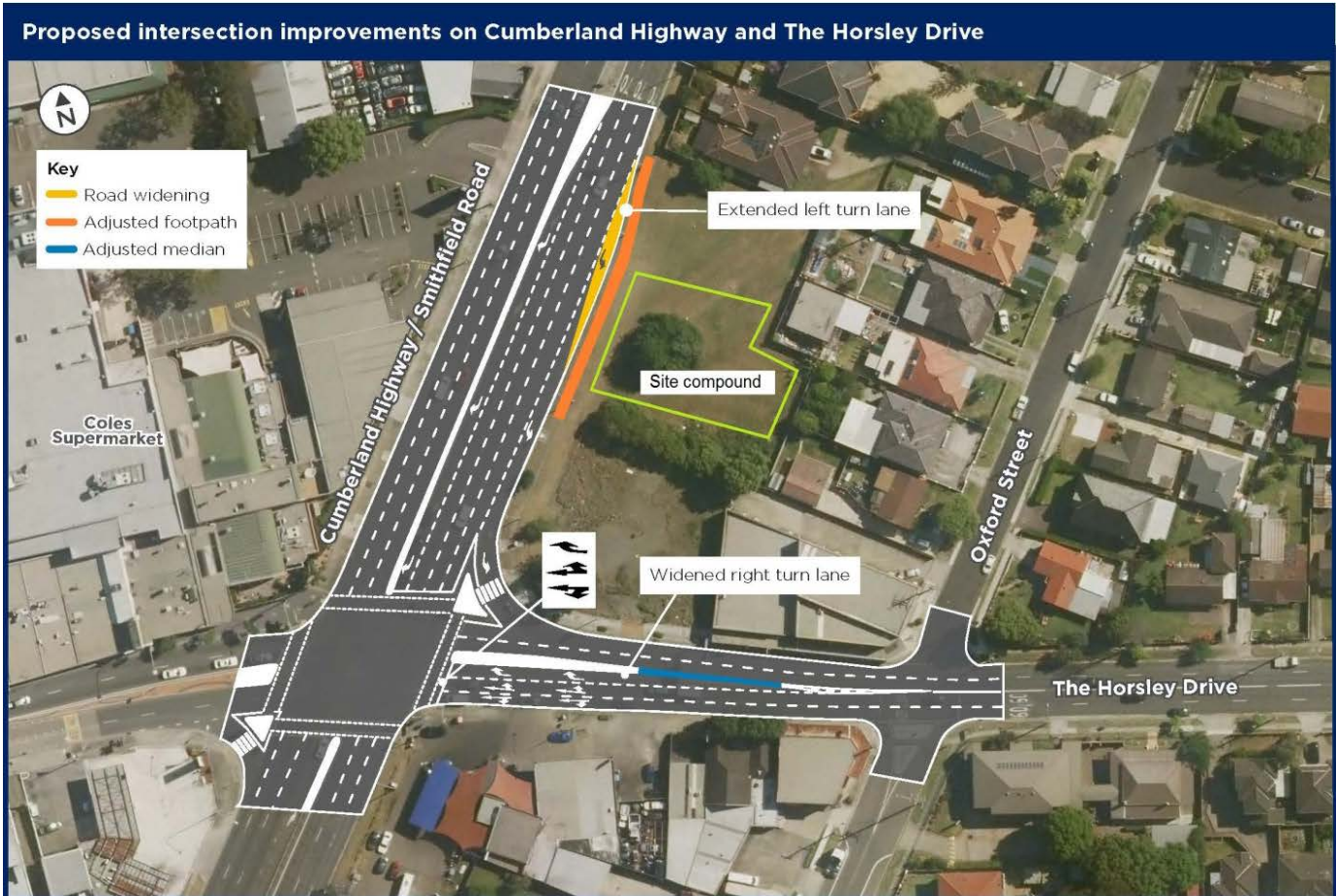


## Have Your Say – Proposed improvements at the intersection of the Cumberland Highway and The Horsley Drive, Smithfield

The NSW Government is funding this proposal as part of its program to ease congestion and improve travel times on Sydney’s busiest corridors.



Roads and Maritime Services is working to improve travel times and safety with a proposal to upgrade the intersection of the Cumberland Highway and The Horsley Drive in Smithfield.

Currently, motorists experience heavy congestion, slow travel times and delays while transferring between the Cumberland Highway and The Horsley Drive.

The aim of our proposal is to allow more road users at this intersection to queue within an extended left turn lane on the Cumberland Highway and a widened right turn lane on The Horsley Drive without restricting through traffic along the corridor. This will improve safety and increase the capacity of the intersection.



## Key benefits

The proposal will improve:

- capacity of the intersection and reduce congestion
- travel times, particularly in peak hours
- traffic flow at this intersection and approaches
- safety for pedestrians and road users.

The proposed improvements include:

- widening the existing right turn lane on The Horsley Drive by adjusting the existing median
- extending the existing left turn bay on Cumberland Highway into The Horsley Drive
- adjusting affected footpaths along the Cumberland Highway.

The proposal also includes a site compound on Roads and Maritime owned land. No vegetation is expected to be removed for this project.

## Have your say

We are seeking feedback by **Friday 5 October** on our proposed improvements. We welcome your comments on and will consider community feedback before continuing with the project.

You can provide your comments by:

<b>Calling</b>	1800 572 004 and leaving a message for the project team
<b>Emailing</b>	pinchpoint@rms.nsw.gov.au
<b>Writing</b>	Roads and Maritime Services, PO Box 973, Parramatta, NSW 2124

## Next Steps

We will carefully consider all feedback received before deciding whether or not to proceed with this proposal. A community consultation report will be prepared, summarising the matters raised and our responses.

For more information on our projects, visit <http://www.rms.nsw.gov.au/projects/sydney-west/cumberland-highway-the-horsley-drive-smithfield>.



### Translating and Interpreting Service

If you need an interpreter, please call the Translating and Interpreting Service (TIS National) on **131 450** and ask them to telephone Roads and Maritime Services on 1800 572 004

#### Arabic

إذا كنتم بحاجة إلى مترجم، الرجاء الاتصال بخدمة الترجمة الخطية والشفهية (TIS National) على الرقم **131 450** والطلب منهم الاتصال بوكالتكم Roads and Maritime Services على الرقم 1800 572 004

#### Cantonese

若你需要口譯員，請致電 **131 450** 聯絡翻譯和口譯服務署 (TIS National) 要求他們致電 1800 572 004 聯絡 Roads and Maritime Services。

#### Mandarin

如果你需要口譯員，請致電 **131 450** 联系翻译和口译服务署 (TIS National)，要求他们致电 1800 572 004 联系 Roads and Maritime Services。

#### Greek

Αν χρειάζεστε διερμηνέα, παρακαλείσθε να τηλεφωνήσετε στην Υπηρεσία Μετάφρασης και Διερμηνείας (Εθνική Υπηρεσία ΤΙΣ) στο **131 450** και ζητήστε να τηλεφωνήσουν Roads and Maritime Services στο 1800 572 004

#### Italian

Se desiderate l'assistenza di un interprete, prego telefonare al Servizio Interpreti e Traduttori (TIS National) al **131 450** chiedendo di contattare Roads and Maritime Services al 1800 572 004

#### Korean

통역사가 필요하시면 번역통역서비스 (TIS National) 에 **131 450** 으로 연락하여 이들에게 반으로 1800 572 004 Roads and Maritime Services 에 전화하도록 요청하십시오.

#### Vietnamese

Nếu cần thông ngôn viên, xin quý vị gọi cho Dịch Vụ Thông Phiên Dịch (TIS Toàn Quốc) qua số **131 450** và nhờ họ gọi cho Roads and Maritime Services qua số 1800 572 004