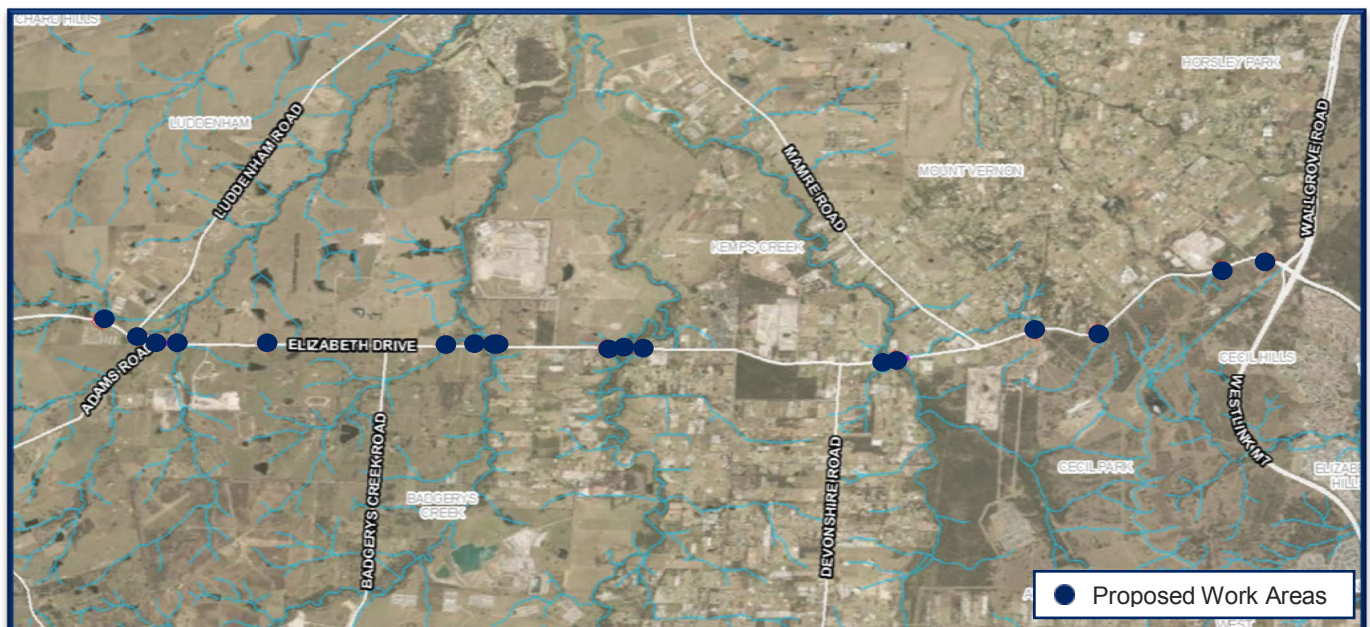


Geotechnical investigations on Elizabeth Drive from Thursday 31 October 2019

The NSW Government investigating improvements to Elizabeth Drive between the M7 Motorway at Cecil Hills and The Northern Road at Luddenham.

Roads and Maritime Services will carry out geotechnical investigations on a 12 kilometre section of Elizabeth Drive between The Northern Road in Luddenham and the M7 Motorway in Cecil Hills to inform the upgrade of Elizabeth Drive.

The work will involve digging boreholes in the ground to examine soil, sand and existing road conditions.



How will the work affect you?

Our work may be noisy at times but we will make every effort to minimise impacts on residents by:

- adapting our construction methods to reduce night work impacts as much as possible
- changing work locations to minimise continuous impact on the same groups of residents
- using equipment fitted with noise mitigation devices and monitoring noise at night.

There may be temporary traffic changes during our work hours to ensure the work zone is safe.

Lane closures may be in place and may affect travel times. Please keep to speed limits and follow signs and traffic controllers' directions. For the latest traffic updates, you can call 132 701, visit livetraffic.com or download the Live Traffic NSW App.

Our work schedule

Work will be carried out between **Thursday 31 October 2019 and Friday 22 November, weather permitting.**

Work hours are Monday to Friday between 7am and 6pm, and some nights from Monday to Friday between 8pm and 5am.

Contact

If you have any questions, please contact our Project Manager, Liam Sheridan on 0455 093 047 or via email elizabethdrive@rms.nsw.gov.au

For more information about our projects visit rms.nsw.gov.au

Thank you for your patience during this important work.



If you need help understanding this information, please contact the Translating and Interpreting Service on 131 450 and ask them to call us on 1800 865 303.