

Night work and parking changes at Empire Bay Drive and The Scenic Road intersection, Kincumber from Monday 22 October

The NSW Government is investing \$20 million to upgrade the Empire Bay Drive and The Scenic Road intersection to improve traffic flow and safety for road users.

Roads and Maritime Services is upgrading the existing roundabout at Empire Bay Drive, The Scenic Road and Cochrone Street at Kincumber to reduce congestion and improve safety for road users.

The project involves upgrading the roundabout from one lane to two lanes in each direction, building new shared pathways and footpaths, resurfacing the road and improving safety at nearby intersections.

Upcoming work activities

Work is continuing to be carried out between **7am** and **6pm** on **weekdays** and between **8am** and **1pm** on **Saturdays**, weather permitting.

Parking restrictions will be in place on Cochrone Street between Empire Bay Drive and Hawke Street from **Monday 22 October until early November** while stormwater drainage work is carried out.

We have included a map showing the work area, parking restrictions and alternative parking.

Night work will be carried out from **Sunday 28 October**, weather permitting, to locate underground utilities through the roundabout. We will be working between **6pm** and **5am** and expect to complete this work in **five nights**.

How will work affect you?

The night work will involve the use of machinery which generates some noise. We will make every effort to minimise noise by completing noisier activities earlier in the night and turning off machinery and vehicles when not in use.

Traffic changes

Lane closures and traffic control will be in place during work hours and may affect travel times.

A permanent 40 km/h reduced speed limit remains in place through the work zone for the safety of motorists and workers.

Please keep to speed limits and follow the direction of traffic controllers and signs. For the latest traffic updates, you can call 132 701, visit livetraffic.com or download the Live Traffic NSW App.

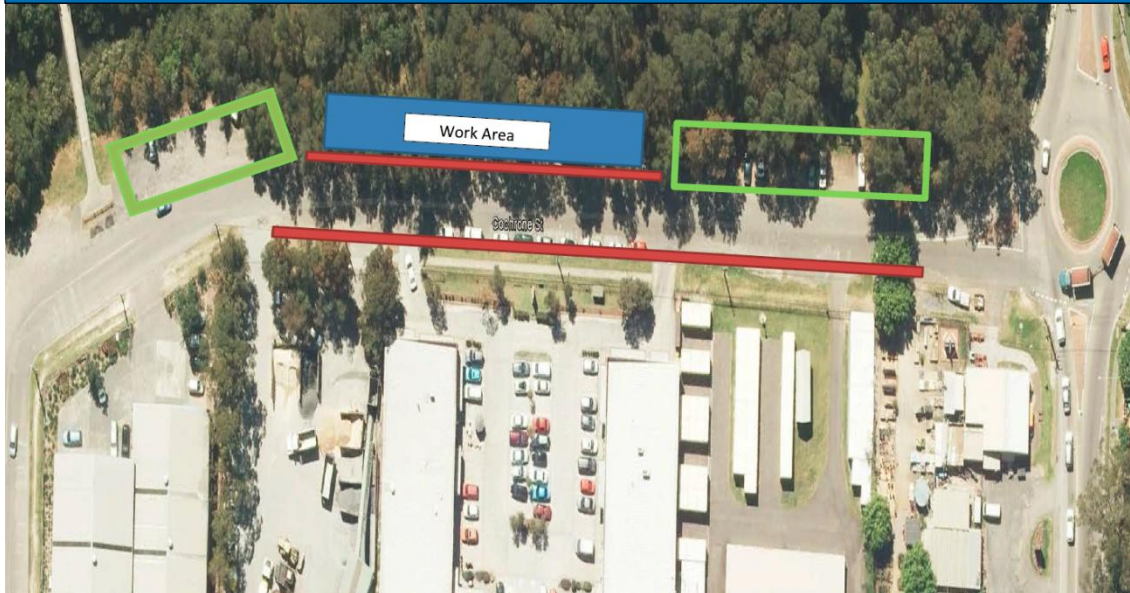
Contact

If you have any questions, please contact the project information line on 1800 670 016.

For more information on our projects, visit rms.nsw.gov.au.

We thank you for your patience while this early work is carried out.

Night work at Empire Bay Drive and The Scenic Road intersection, Kincumber



Legend:

- Work Area: 
- No parking: 
- Available Parking: 



**Intersection
improvements**



If you need help understanding this information, please contact the Translating and Interpreting Service on 131 450 and ask them to call us on 1800 670 616.