

May 2017

Investigation work for the proposed F6 Extension corridor assessment from 23 May 2017

The NSW Government is investing in further assessments to help identify the preferred corridor for the future F6 Extension.

Roads and Maritime Services is carrying out geotechnical testing to gather information about underground rock and soil conditions across a broad area. Information gathered will be used in the development of a preferred corridor for a future F6 Extension motorway.

A site identified by our geologists for test drilling is at Toyer Avenue. We have included a map to show the location of the work. The location of these tests does not indicate a possible alignment.

Work will start from 23rd May 2017 and take around seven days to complete, weather permitting. Please see the enclosed fact sheet for more information.

The work will take place between 7am and 6pm from Monday to Friday and 8am and 1pm on Saturday. There will be no work at night, on Sunday or public holidays.

How will the work affect you?

There may be some noise associated with this work, but we will make every effort to minimise its impact.

Geotechnical testing involves drilling small diameter holes (about the size of an orange) to extract rock samples used for scientific testing and analysis. Equipment will include a self-propelled drilling rig, support equipment as well as various hand tools.

A temporary work site with safety fencing will be also be established for worker and public safety.

When the work is completed, an instrument will be installed in the hole to monitor groundwater conditions and this will be covered with a steel lid for at least six month.

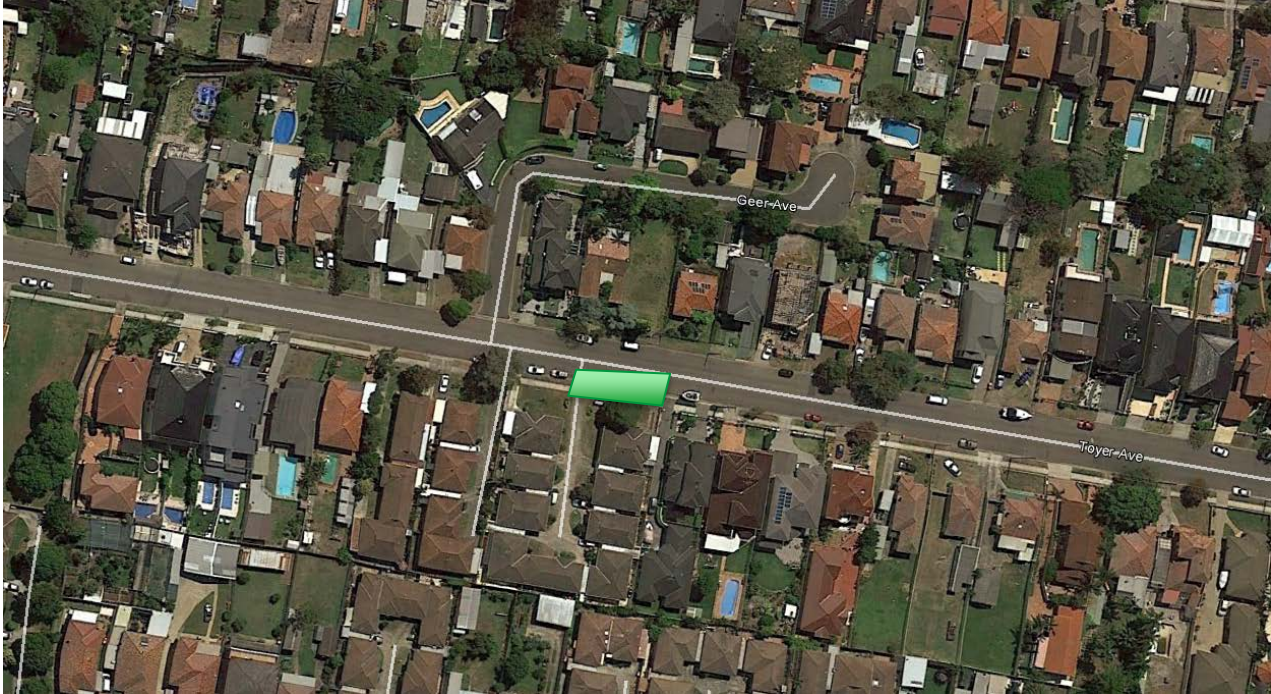
Traffic changes

There will be temporary traffic changes to ensure the work zone is safe, which may affect travel times. Some additional street parking may be required to accommodate traffic control changes.

Please keep to speed limits and follow the direction of traffic controllers and signs. For the latest traffic updates, you can call 132 701, visit livetraffic.com or download the Live Traffic NSW App.

Location map

The worksite will be located on the westbound lane of Toyer Avenue.



Contact

If you have any questions please contact our project team on 1800 789 297 during office hours (8.30am to 5pm Monday to Friday) or motorwaydevelopment@rms.nsw.gov.au. For more information visit rms.nsw.gov.au/f6corridor.

Thank you for your patience during this important work.

Translating and Interpreting Service

If you need an interpreter, please call the Translating and Interpreting Service (TIS National) on 131 450 and ask them to telephone Burtons on 1800 631 531.

