

Foxground and Berry bypass

BRIDGE AT BERRY

JULY 2014

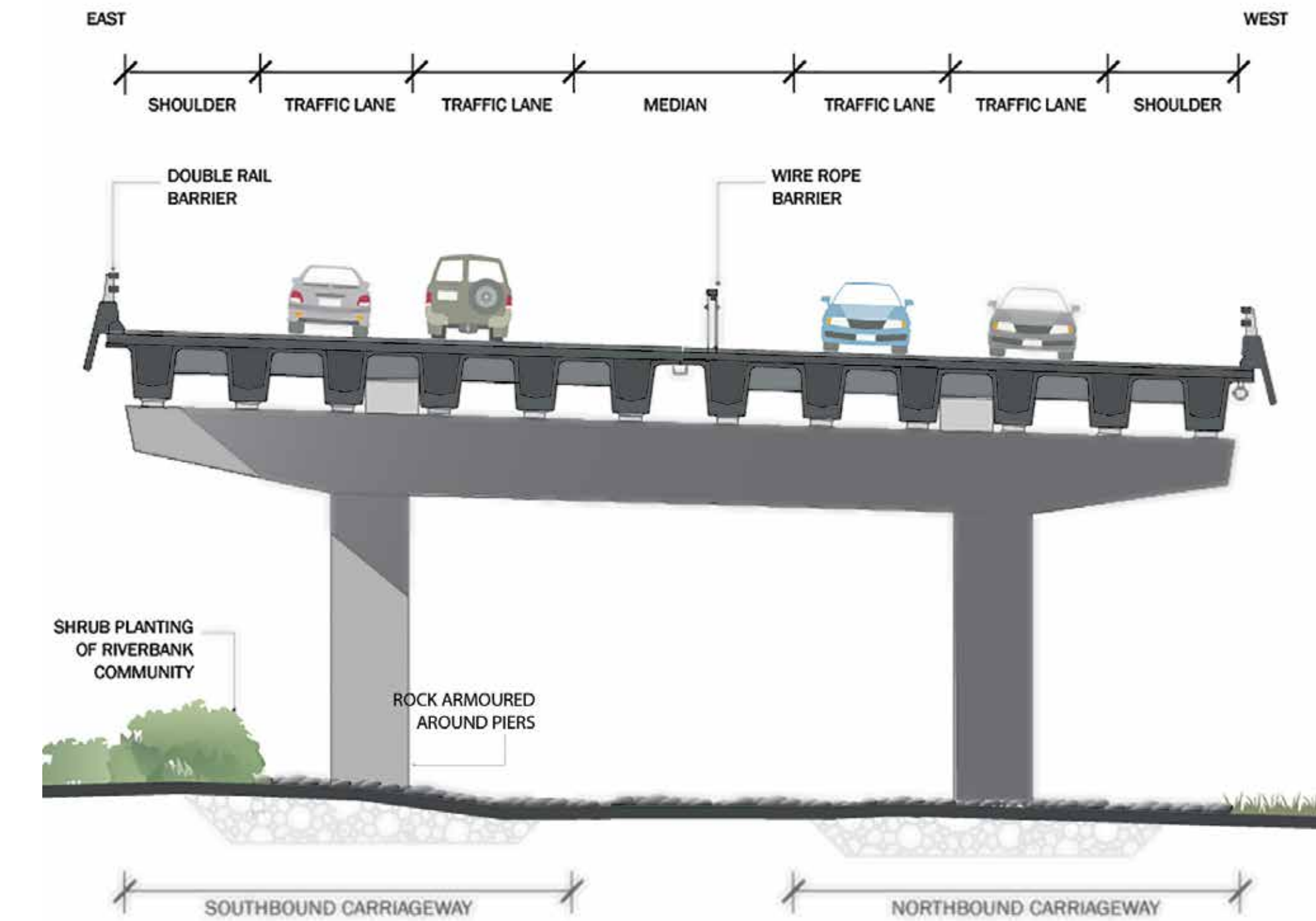
- The bridge at Berry will be built using precast concrete 'super-T' girders with the deck to be cast-in-place.
- The bridge will carry two lanes of traffic in each direction separated by a wire rope safety barrier in the median strip.
- A three metre wide shoulder will be provided on both sides of the bridge.
- The bridge will have a deck length of approximately 610 metres and will be 25 metres wide.

Changes from Approved Concept Design:

To improve visibility and safety for motorists, and to minimise the impact of construction on the environment, a number of changes have been made:

- The lower structure of the bridge will allow for a single headstock each supported by two rectangular columns.
- Piers 3 and 4 of the bridge have been located away from Broughton Mill Creek to minimise impacts on the environment.

- A small section of Bundewallah Creek has been diverted allowing piers 15 and 16 of the bridge to be located away from the creek, minimising impacts on the environment.



Typical cross section of the bridge



Artist's impression - Perspective of Berry Bridge – view from Woodhill Mountain Road looking south