



Transport for NSW

Great Western Highway Upgrade Program

Katoomba to Lithgow

Community Update | February 2020

The Program

The NSW Government is investing \$2.5 billion towards upgrading the Great Western Highway between Katoomba and Lithgow to a four lane carriageway. Once completed, the upgrade Program will reduce congestion and provide safer, more efficient and more reliable journeys along the highway and better connect the Central West with coastal and mountain communities.

Options for upgrading the highway between Katoomba and Lithgow are constrained by steep topography, the railway line, private property boundaries, existing towns and the Blue Mountains National Park and World Heritage areas.

The concept design and reserved corridor for the Mount Victoria to Lithgow section was previously adopted in 2013.

Where is the Program up to?

In November and December 2019, we sought feedback from the community and stakeholders on:

- a strategic study area in Blackheath
- a strategic corridor through other areas between Katoomba and Mount Victoria,
- the reserved corridor between Mount Victoria and Lithgow.

Feedback and information received throughout the consultation period, technical studies and environmental assessments will be used to inform the next steps of the Program.

The Program will be divided into stages to be delivered over coming years.

We will continue to consult closely with the community at all stages.

Co-Designing Blackheath with the community

Planning for options to upgrade the highway at Blackheath is in its initial phase.

We will be working with the community to co-design potential options for Blackheath. We are setting up a co-design committee which aims to include Blue Mountains City Council staff, key local stakeholders and community representatives.

The Blackheath Co-Design Committee (BCC) will consider several different options through Blackheath for community consultation. We expect this process to take about six months.

No preferred options have been endorsed for an upgrade through Blackheath.

Nominations are now open

We invite nominations from community members interested in joining the BCC. For more information please visit nswroads.work/greatwesternhighway



Blackheath looking towards the Great Western Highway

Consultation report

We thank the community and stakeholders for providing feedback during the recent consultation period.

730 people attended 11 community information sessions, including more than 320 people at the Blackheath public meeting. Information was displayed at libraries along the route and in the Central West, Blue Mountains City Council and Bathurst Regional Council. There were 2900 unique visitors to the online project portal.

We received approximately:

- 320 feedback forms
- 780 feedback pins on the interactive map
- 600 submissions via the website, email and post.

General feedback themes include:

- property impacts, in particular at Blackheath
- concerns about increased road freight and support for moving more freight to rail
- noise impacts
- concern about impact to the natural environment
- support from businesses based in Lithgow and further west, including requests for a 100km/h speed limit across the mountains
- requests for more information about timeframes, staging and the start of further work.

Most feedback was concerned with Blackheath including impact on the village and the need for the project.

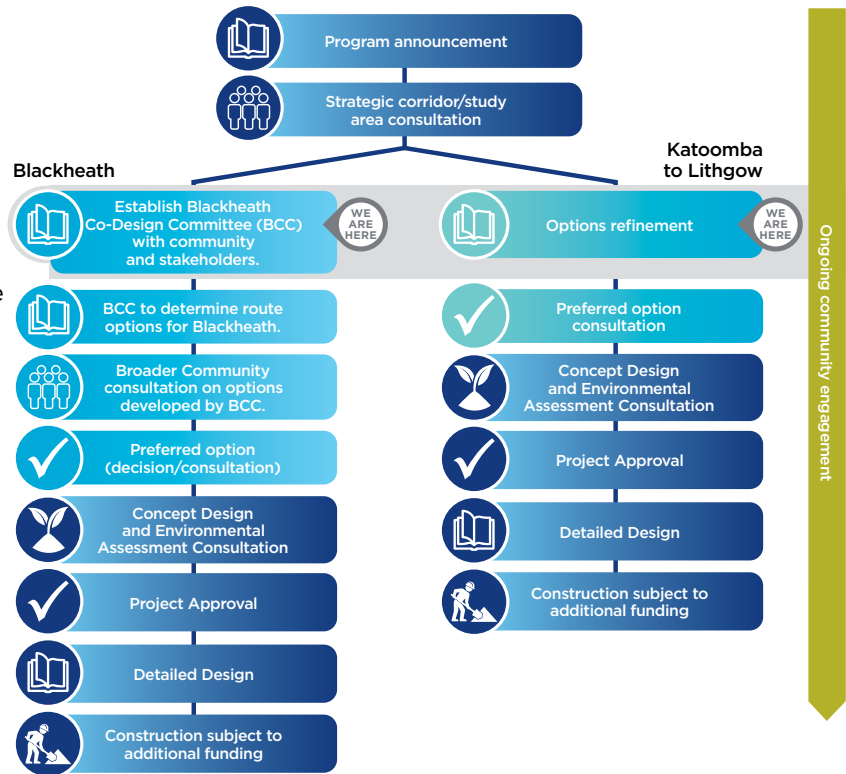
Next steps

A Consultation Summary Report, including community feedback and responses, is being prepared and will be published on our website.

We will appoint community members to the BCC and begin the co-design process.

We expect to consult the wider community on the refined options for Blackheath in mid-2020.

Existing and new reports will be published to the Program’s website as they are available.



Subscribe now

Register your interest to stay up to date with the project:

- 1800 953 777
- gwhd@rms.nsw.gov.au

For more information

If you have any questions or would like more information please contact our project team:

- 1800 953 777
- gwhd@rms.nsw.gov.au
- nswroads.work/greatwesternhighway

Great Western Highway Upgrade Program
Po Box 2332, Orange NSW 2800



This document contains important information about road projects in your area. If you require the services of an interpreter, please contact the Translating and Interpreting Service on 131 450 and ask them to call the project team on 1800 953 777. The interpreter will then assist you with translation.