

January 2018

## **Night investigation work near the intersections of Hoxton Park Road and Whitford Road, Banks Road, Joadja Road and Flowerdale Road, Liverpool, from Monday 5 February**

**The NSW Government is funding this proposal as part of its \$300 million Urban Roads Pinch Point Program, which aims to reduce congestion and improve travel times on Sydney's business corridors.**

Roads and Maritime Services is carrying out survey and investigation work near the intersections of Hoxton Park Road and Whitford Road, Banks Road, Joadja Road and Flowerdale Road, Liverpool. This will include locating utilities, drilling holes and reinstating pavements. To minimise the impact on traffic and to ensure the safety of workers and road users, most of this work will be carried out at night.

We have included a map to show the location of work.

### **Our work schedule**

The investigation work will be carried out between **Monday 5 February, 2018** and **Friday 27 April, 2018**, weather permitting. The work will be completed in **20 night shifts** over a **12 week period**. Our night working hours will be between **8pm** and **5am**. We will not be working on weekends or public holidays.

### **How will the work affect you?**

Our work may be noisy at times but we will do everything we can to minimise its impact, including completing the noisier activities by **11pm**.

### **Traffic changes**

There will be temporary traffic changes during our work hours to ensure the work zone is safe.

Lane closures will be in place and may affect travel times. Please keep to speed limits and follow signs and traffic controllers' directions. For the latest traffic updates, you can call 132 701, visit [livetraffic.com](http://livetraffic.com) or download the Live Traffic NSW App.

### **Contact**

If you have any questions, please contact our Project Engineer, Trung Huynh, during business hours, on 1800 572 004 or [pinchpoint@rms.com.au](mailto:pinchpoint@rms.com.au).

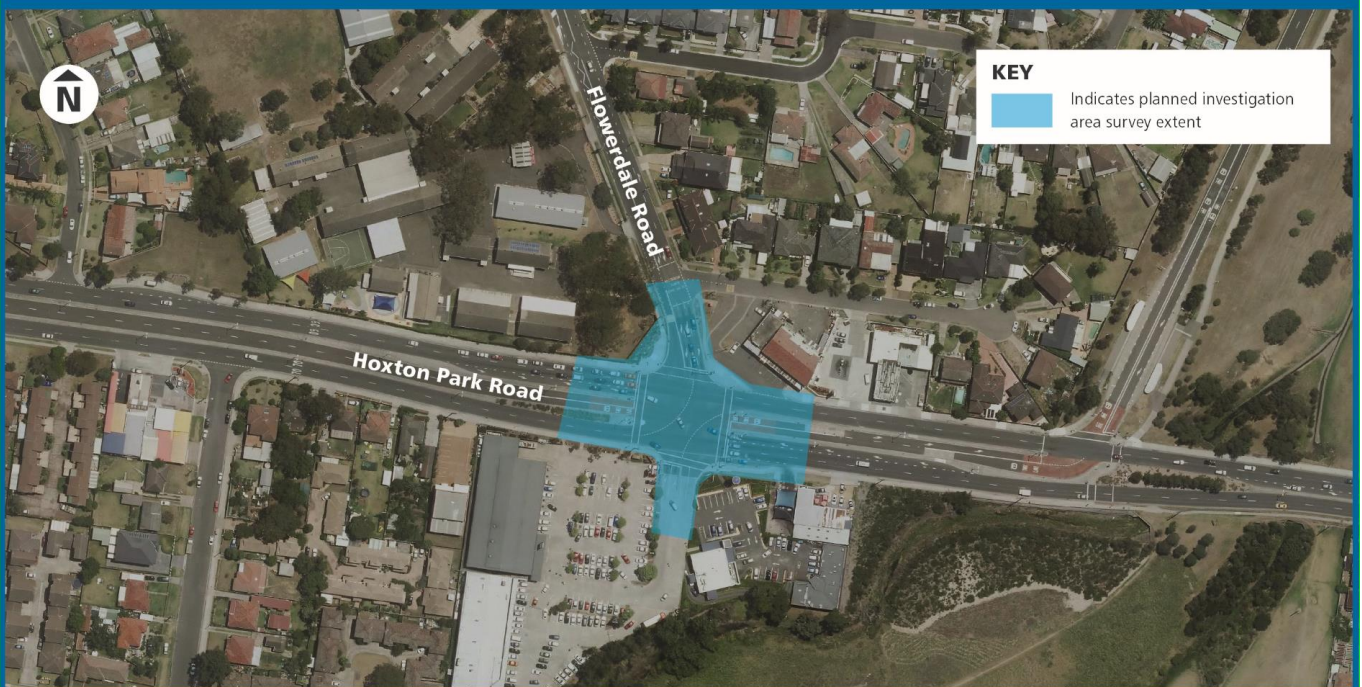
For more information on our projects, visit [rms.nsw.gov.au](http://rms.nsw.gov.au).

Thank you for your patience during this important work.

### Intersection of Hoxton Park Road and Whitford Road, Banks Road and Joadja Road



### Intersection of Flowerdale Road and Hoxton Park Road



If you need help understanding this information, please contact the Translating and Interpreting Service on 131 450 and ask them to call us on 1800 572 004.