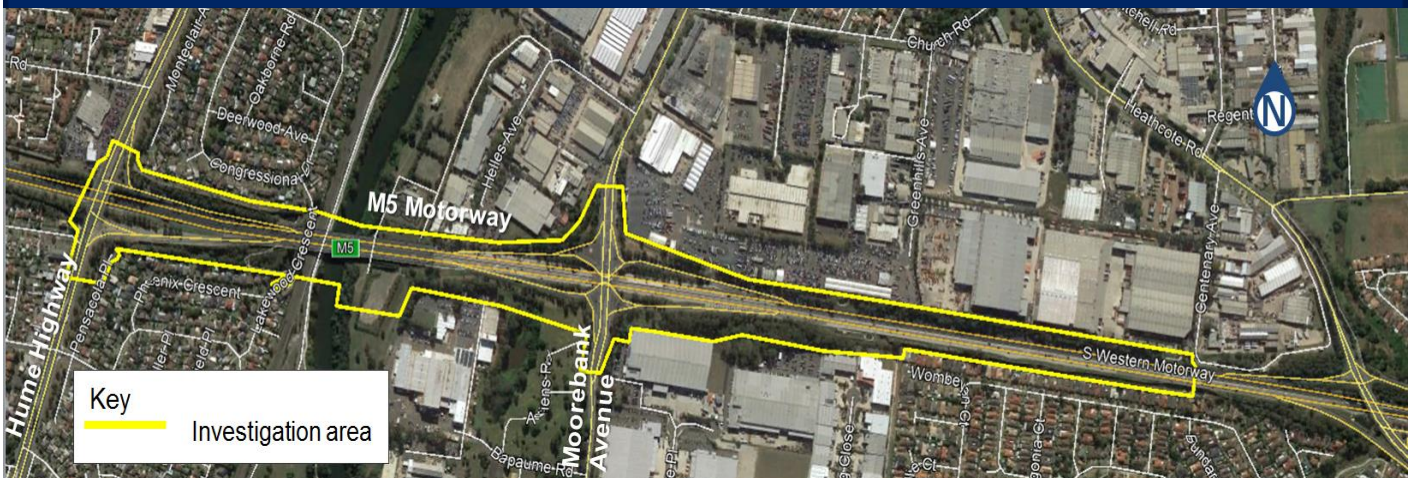


Investigation work as part of the M5 Westbound upgrade between Moorebank Avenue and Hume Highway from Monday 2 November

Transport for NSW is planning to improve the M5 Motorway westbound between Moorebank Avenue and the Hume Highway. We have identified a design to upgrade the M5 Motorway in this area to reduce congestion and improve the surrounding road network efficiency.

We will carry out investigation work from Monday 2 November to assist with planning the upgrade. The investigation work will include geotechnical, utility investigations and survey work in a number of locations.

Investigation work on M5, Moorebank Avenue and Hume Highway, Moorebank



How will the work affect you?

We will carry out some of the investigation work during the day and some activities at night. The work will occur in number of locations along the M5 Motorway, Moorebank Avenue and the Hume Highway. Our activities will include:

- Concrete saw cutting
- Vacuum excavating
- Locating utilities
- Core drilling
- Surveying
- Reinstating the surface after the work.

Our work may be noisy at times but we will do everything we can to minimise its impact.

Our work schedule

We will be on site for investigation work between **Monday 2 November 2020** and **Friday 11 December 2020**, weather permitting.

Our day work hours will be from Monday to Friday between 7am and 6pm and Saturday between 8am and 1pm. Our night work hours will be from Sunday to Thursday between 9pm and 5am.

Contact us

If you have any questions please contact the project team on 1800 519 525 or email m5moorebank@rms.nsw.gov.au.

To find out more go to:
nswroads.work/m5motorwaywestbound

Traffic changes

There will be some temporary traffic changes to ensure the work zone is safe. Lane closures may be in place and will affect travel times.

Please keep to speed limits and follow signs and traffic controllers' directions. For the latest traffic updates, you can call 132 701, visit livetraffic.com or download the Live Traffic NSW App.

Notice to Higher School Certificate students

If you or a member of your household is studying for the HSC, please contact us. This will allow us to inform you in advance of work taking place during that period near your home. Options may include scheduling work or noisy activities outside of areas and times where students will be studying.

Due to traffic changes, please allow extra time to travel to your HSC exams.



Translating and Interpreting Service

If you need an interpreter, please call the Translating and Interpreting Service (TIS National) on **131 450** and ask them to telephone Transport for NSW on 1800 519 525.

Arabic

إذا كنت بحاجة إلى مترجم، الرجاء الاتصال بخدمة الترجمة الخطية و التلوية (TIS National) على (TIS National) على الرقم 131 450. و الطلب منهم الاتصال بواكالكم 1800 519 525

Cantonese

若你需要口譯員，請致電 131 450 聯絡翻譯和口譯服務署 (TIS National)，要求他們致電 1800 519 525 聯絡 Transport for NSW。

Mandarin

如果你需要口譯員，請致電 131 450 联系翻译和口译服务署 (TIS National)，要求他们致电 1800 519 525 联系 Transport for NSW。

Greek

Αν χρειάζεστε διαμεγνών, παρακαλείσθε να τηλεφωνήσετε στην Υπηρεσία Μετάφρασης και Διαμεγνών (Εθνική Υπηρεσία TIS) στο **131 450** και ζητήστε να τηλεφωνήσουν Transport for NSW στο 1800 519 525.

Italian

Se desiderate l'assistenza di un interprete, prego telefonare al Servizio Interpreti e Traduttori (TIS National) al **131 450** chiedendo di contattare Transport for NSW al 1800 519 525.

Korean

통역사가 필요하시면 번역통역서비스 (TIS National) 에 **131 450** 으로 연락하여 이들에게 1800 519 525 번으로 Transport for NSW 에 전화하도록 요청하십시오.

Vietnamese

Nếu cần thông ngôn viên, xin quý vị gọi cho Dịch Vụ Thông Phiên Dịch (TIS Toàn Quốc) qua số **131 450** và nhờ họ gọi cho Transport for NSW qua số 1800 519 525.