

Mona Vale Road East - Out of hours work

This update includes a change to the activities we previously communicated for the week starting Monday 18 May.

Out of hours work is planned from **8pm to 5am** on the following dates, weather permitting:

- **Monday 18, Tuesday 19 and Thursday 21 May**
- **Friday 29 May**

If work is delayed due to wet weather, we will try and work a different night in the same week. We will notify highly impacted residents if there is a change of date.

Work along the eastern end of the project includes:

- removing trees on Samuel Street near the intersection with Mona Vale Road
- tree removal on Emma Street near the intersection with Mona Vale Road
- saw cutting and locating existing services. We will be using a vacuum truck and saw cutter to excavate across Mona Vale Road from Samuel Street to Ponderosa Parade
- installing power poles along Mona Vale Road, eastbound, near the Mona Vale Cemetery and the footpath at the intersection with Samuel Street
- ongoing road maintenance.

Work along the western end of the project includes:

- removing rock material from the top of the existing rock cuttings near our site compound (opposite 120 Mona Vale Road), near Ingleside Road, near Laurel Road and near the eastern end of Lane Cove Road
- installing screens and relocating concrete barriers on Mona Vale Road near Laurel Road and the eastern end of Lane Cove Road
- ongoing road maintenance.

We will use excavators with rock hammers, backhoes, tipper trucks, small cranes, hammer drills, a roller, street sweepers, chainsaws, light vehicles and light towers. A stop/slow arrangement will be in place with traffic controllers and signage directing traffic.

Enquiries and registering for work updates

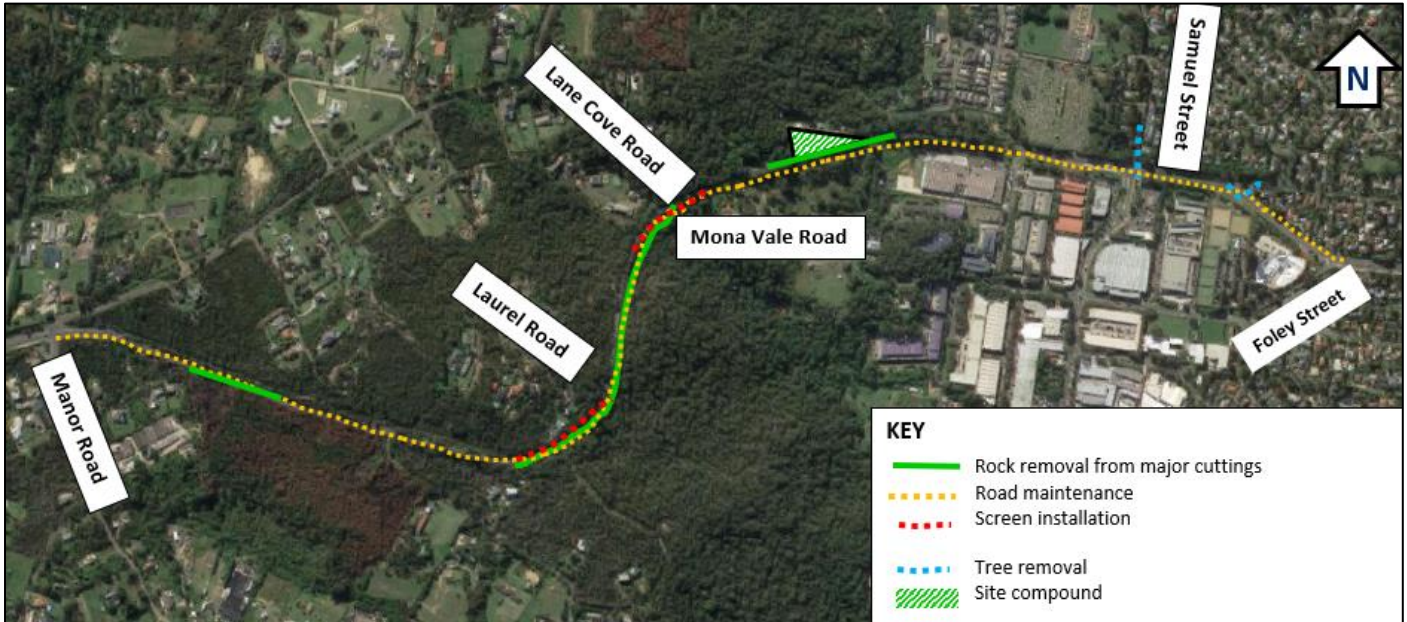
Call: 1800 413 640 (24 hour number).

Email: monavaleroad@georgiou.com.au

For more information: rms.work/mvrest

If you need help understanding this information, please contact the Translating and Interpreting Service on 131 450 and ask them to call us on 1800 413 640.

Map showing location of out of hours work in Mona Vale Road East



Note: Shaded areas are approximations for general information and illustrative purposes only

Use of drone

A drone will be used during the last week of each month to take progress photos and assist with surveying the project. The drone will remain within the project area.