

Mona Vale Road East - Out of hours work

May 2020

We recently made changes to our night work program so more work could be done during the day. However, the activities described below must be completed at night due to daytime traffic volumes and for safety reasons.

Out of hours work is planned from **8pm to 5am** on the following dates, weather permitting:

- **Monday 11, Tuesday 12 and Thursday 14 May**
- **Monday 18, Tuesday 19 and Thursday 21 May**

If work is delayed due to wet weather, we will try and work a different night within the same week. We will notify highly impacted residents if there is a change of date.

Work along the eastern end of the project includes:

- removing vegetation on Samuel Street near the intersection with Mona Vale Road (to make way for new utilities and the future road widening and footpath)
- ongoing road maintenance.

Work along the western end of the project includes:

- removing rock material from the top of the existing rock cuttings near our site compound (opposite 120 Mona Vale Road) and near Laurel Road
- installing screens and relocating concrete barriers on Mona Vale Road near Laurel Road and the eastern end of Lane Cove Road
- ongoing road maintenance.

We will use excavators with rock hammers, backhoes, tipper trucks, small cranes, hammer drills, a roller, street sweepers, chainsaws, light vehicles and light towers. A stop/slow arrangement will be in place with traffic controllers and signage directing traffic.

Enquiries and registering for work updates

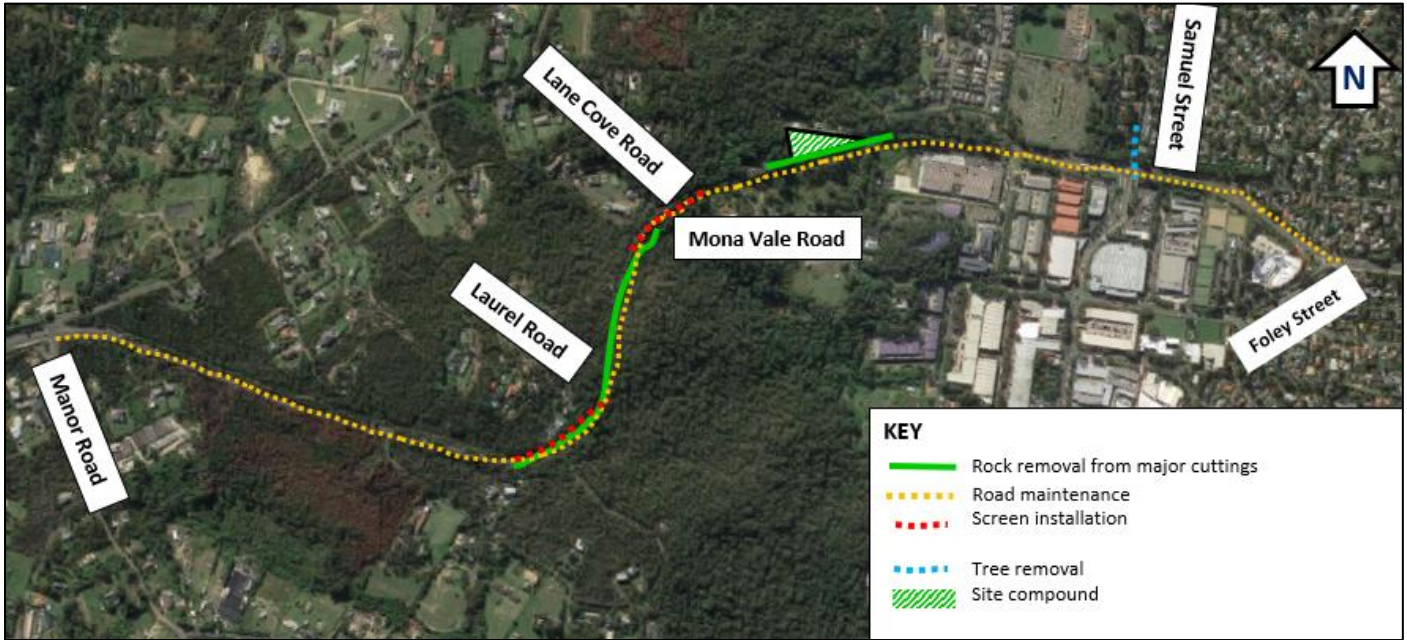
Call: 1800 413 640 (24 hour number).

Email: monavaleroad@georgiou.com.au

For more information: [rms.work/mvreast](https://www.rms.nsw.gov.au/work/mvreast)

If you need help understanding this information, please contact the Translating and Interpreting Service on 131 450 and ask them to call us on 1800 413 640.

Map showing location of out of hours work in Mona Vale Road East



Note: Shaded areas are approximations for general information and illustrative purposes only

Use of drone

A drone will be used during the last week of each month to take progress photos and assist with surveying the project. The drone will remain within the project area.