

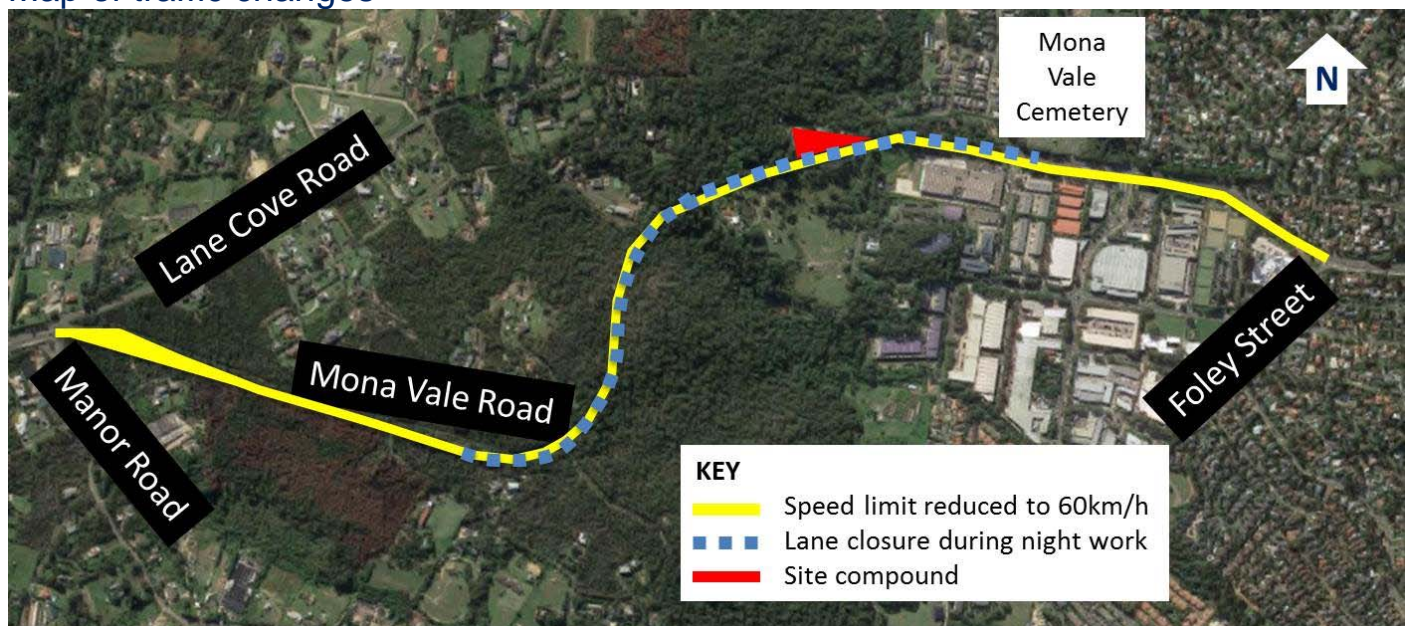
Traffic changes on Mona Vale Road between Ingleside and Mona Vale from Monday 4 March

The NSW Government is investing \$140 million to upgrade Mona Vale Road between Manor Road, Ingleside, and Foley Street to improve safety and traffic flow.

Roads and Maritime Services is upgrading Mona Vale Road between Ingleside and Mona Vale from two to four lanes. As part of this work, we will be implementing a number of traffic changes along Mona Vale Road. These will include:

- reduced speed limit on Mona Vale Road between Manor Road and Foley Street
- lane closure on Mona Vale Road during night work.

Map of traffic changes



Note: Shaded areas are not to scale. Map is for general information and illustrative purposes only

Reduced speed limit

Roads and Maritime will reduce the speed limit from **70km/h** to **60km/h** along Mona Vale Road, between Manor Road, Ingleside, and Foley Street, Mona Vale.

The speed limit reduction is necessary as the road shoulders along this section of Mona Vale Road will be narrowed with road barriers in place. These changed road conditions are not suitable for the existing 70km/h speed limit. The speed reduction will ensure the work zone is safe for motorists and workers.

The reduced speed limit will take effect from **1am** on **Monday morning 4 March** and will remain in place until the end of the project which is expected to be 2022, weather permitting. Signage will be in place and speed limits will be enforced.

Night work lane closure

During **night work** we will be closing one lane on Mona Vale Road for around 1.5 kilometres from east of Manor Road to Mona Vale Cemetery, Mona Vale.

The lane closure will be in place during night work, from **Monday 4 March**, between **8.30pm** and **5am** on **weekdays**, weather permitting.

A contra-flow arrangement will be in place, with signage and traffic controllers to direct traffic. During the lane closure, the speed limit will be reduced to **40km/h** to ensure the safety of motorists and workers.

Speed limits may vary from time to time and will be enforced. We will let the community know in advance when further changes are planned.

How will the work affect you?

We will make every effort to minimise noise during work by using dampening shields where possible, and ensuring equipment and vehicles are turned off when not in use.

During night work, we will focus lights only on the working area. However, there may be some light spill-over into some nearby residences. We will schedule the work in stages at different locations so residents will not be affected for more than two consecutive nights per week.

More information about the traffic changes

Please use caution when travelling through the work zone and follow the directions of traffic controllers.

Motorists are encouraged to plan ahead, allow up to 10 minutes extra time and travel outside the peaks where possible.

Please keep to speed limits and follow the direction of traffic controllers and signs. For the latest traffic updates, you can call 132 701, visit livetraffic.com or download the Live Traffic NSW app.

Contact

We are committed to minimising the impact of construction on the community and will continue to keep you informed as the project progresses. If you have any questions, or would like to sign up for our emailing list, please contact our delivery partner, Georgiou Group.

Call: 1800 413 640 (during business hours)
Email: monavaleroad@georgiou.com.au
Website: rms.work/mvreast

Thank you for your patience during this important work.



If you need help understanding this information, please contact the Translating and Interpreting Service on 131 450 and ask them to call us on 1800 413 640