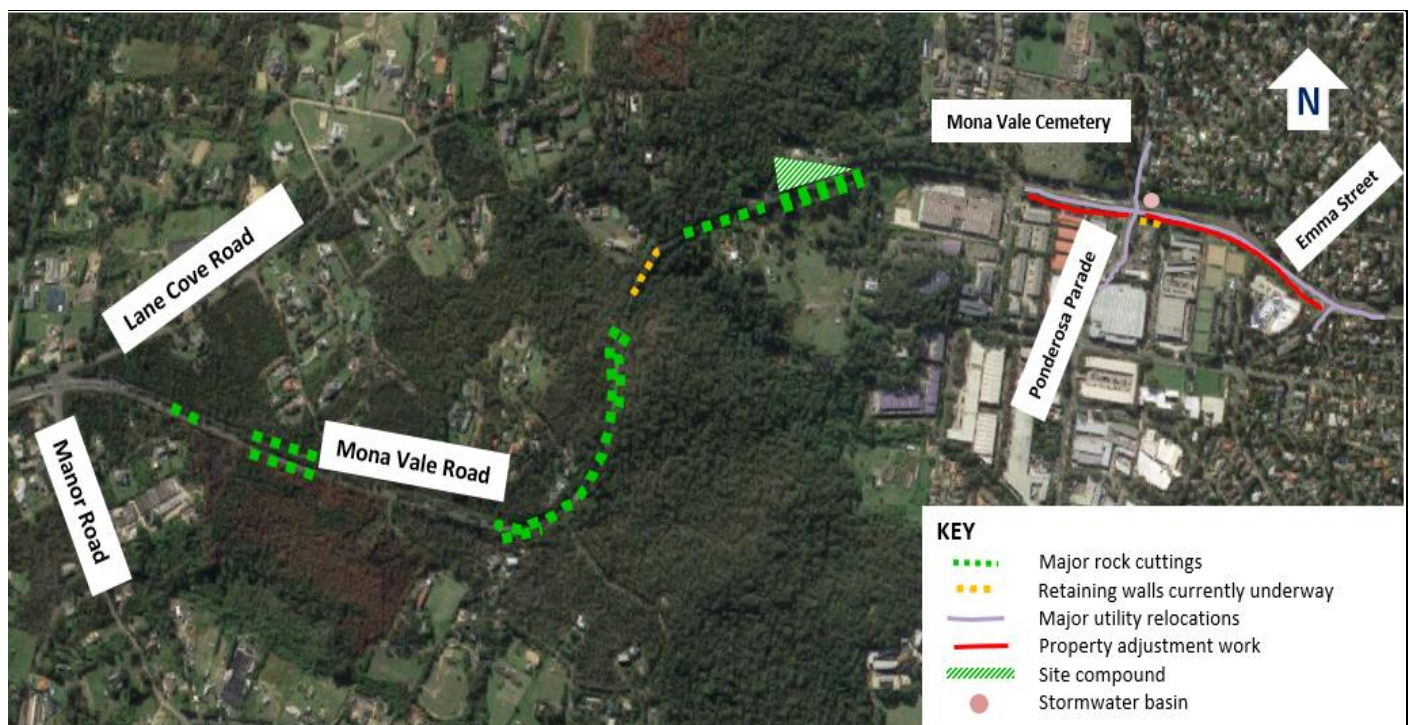


# Mona Vale Road East upgrade project

## Construction update – May 2020

The NSW Government is investing \$140 million to upgrade Mona Vale Road between Manor Road, Ingleside, and Foley Street, Mona Vale, from two lanes to four lanes to improve safety and traffic efficiency. Work is well underway across the full 3.2 kilometre length of the project. This update outlines our work from May to July 2020, weather permitting.

### Map of main work activities on Mona Vale Road



Note: Diagram not to scale and for general information and illustrative purposes only

### Manor Road to Mona Vale Cemetery

Earthworks are continuing along Mona Vale Road between Manor Road and Mona Vale Cemetery and we expect the work to be completed in late 2020, weather permitting.

The earthworks include removing top soil, scaling and breaking rock. To widen the road corridor, we need to cut the rock faces and fill the gullies along the side of the corridor and use excavated material from the rock faces to build up the ground levels to meet the existing roadway.

We are relocating utilities and installing new stormwater drains. This work is mostly completed during the day but for safety reasons, at times it will need to take place at night when the work involves crossing over Mona Vale

Road. When we do this work, partial lane closures of Mona Vale Road will take place to safely complete the work.

Activities to mid-2020 include:

- rock breaking along Mona Vale Road
- stabilisation work along the rock cuttings
- crushing rock during the day at the Western Early Works which will be used as roadbase and backfill material - this material will also need to be temporarily stockpiled until needed for other work on the project
- finishing the retaining wall over Narrabeen Creek to the west of Lane Cove Road

- continuing construction of supporting structure for the fauna bridge between Laurel Road and Lane Cove Road.
- stormwater drainage crossing Mona Vale Road between Manor Road and Samuel Street
- landscaping of the rock batters
- installation of the permanent fauna fencing along Mona Vale Road to protect fauna crossing the road.

## Mona Vale Cemetery to Foley Street

Since September 2019, we have done a lot of work between Mona Vale Cemetery and Foley Street. In this area, in the coming months we will:

- clear and do minor earthworks for new lanes in the project area
- remove two trees near Emma Street intersection with Mona Vale Road
- remove asbestos contaminated soil near the intersection of Samuel Street and Mona Vale Road
- relocate underground and overhead utilities along Samuel Street, Ponderosa Parade, Foley Street and Mona Vale Road
- finalise property boundary work for some commercial and residential properties
- start construction of the stormwater detention basin and drainage along the shoulder of Mona Vale Road from Samuel Street to west of Emma Street and stormwater drainage westbound along Mona Vale Road including a crossing of Ponderosa Parade
- build retaining walls on Mona Vale Road near Ponderosa Parade
- realign the sewer and build new road surfaces westbound along Mona Vale Road
- temporarily relocate the footpath on Mona Vale Road eastbound at the corner of Mona Vale Road and Samuel Street
- temporarily relocate the existing bus stop near the Mona Vale Cemetery.

## Frequently asked questions

### Are there planned power outages?

There may be power outages during utility relocations. Ausgrid is responsible for notifying residents of any planned power outages. Specific resident requirements should be negotiated with Ausgrid as part of their planning.

## For more information

If you have any enquiries, feedback or concerns, or would like to sign up for our emailing list, please:

- Call:** 1800 413 640 (24 hour number)  
**Email:** [monavaleroad@georgiou.com.au](mailto:monavaleroad@georgiou.com.au)  
**Website:** [www.rms.work/mvreast](http://www.rms.work/mvreast)

## What are you doing about dust?

We are minimising the impacts of dust from construction as much as possible. We have put in place a range of measures such as increasing the number of water trucks onsite from three to four, stopping or altering work activities to reduce or eliminate dust during high wind periods, managing stockpiles by using soil binders and mulching.

We also do regular monitoring and inspections of construction at work sites. We have placed dust monitors throughout the project which are regularly tested to ensure we stay within allowable EPA guidelines.

## What are the major steps to this road upgrade?

- clearing of debris and vegetation
- cutting rock and filling to construct new lanes
- stabilising the cuts and compacting the soil
- constructing stormwater drainage, utilities relocations and property adjustment works
- building retaining walls and other road structures
- layering asphalt and other road construction work
- landscaping, road signage and guard rails installation.

We are here

## Extension of working hours

To support industry and continue the delivery of critical infrastructure, the NSW Government introduced new rules allowing construction sites, including public infrastructure projects to operate on weekends and public holidays.

Under the **new rules**, in effect from Monday 4 May 2020, the working hours include all days of the week plus Saturdays/ Sundays/ Public Holidays from 7am to 6pm

No high noise generating work is allowed after 1pm on Saturday, Sunday or Public Holidays unless approved by the Environment Protection License.

**Out of hours work** is now on Monday, Tuesday and Thursday nights from 7pm to 7am with up to three shifts per week, weather permitting from mid-May. The out of hours work will not be carried out for more than two consecutive nights in the same area. We will advise you before we start night work near your property.

We are also seeking extension of out of hours work to four nights a week and have recently completed the community consultation about this matter. A decision by the Environment Protection Authority based on the results from this consultation will be made soon and the community will be advised of the outcome.



Translating and Interpreting Service

If you need an interpreter, please call the Translating and Interpreting Service (TIS National) on **131 450** and ask them to telephone Roads and Maritime Services on 1800 413 640