

Mona Vale Road East upgrade – Temporary closure of Foley Street at Mona Vale Road from Monday 19 October

The NSW Government is investing \$140 million to upgrade Mona Vale Road between Manor Road, Ingleside, and Foley Street, Mona Vale, from two to four lanes to improve safety and traffic efficiency.

Work is progressing on the eastern end of the Mona Vale Road East upgrade between the Mona Vale Cemetery and Foley Street. To continue this work, **Foley Street will be closed at Mona Vale Road from Monday 19 October to Thursday 29 October from 9am to 4pm Monday to Friday**, weather permitting.

We will close Foley Street at Mona Vale Road each day during this period while we dig across Foley Street to install underground electrical cables and install new overhead power cables.

Traffic changes

Traffic detours via Ponderosa Parade will be in place as per the map overleaf. Access for Foley Street residents will be via Jubilee Avenue, Warriewood Road or Vineyard Street. Traffic controllers will be on site to direct motorists and pedestrians safely past our work zone and assist residents in and out of their driveways. Access to Pittwater RSL will be from Jubilee Avenue.

Please allow extra travel time, follow displayed speed limits and the direction of traffic controllers and signs.

How will the work affect you?

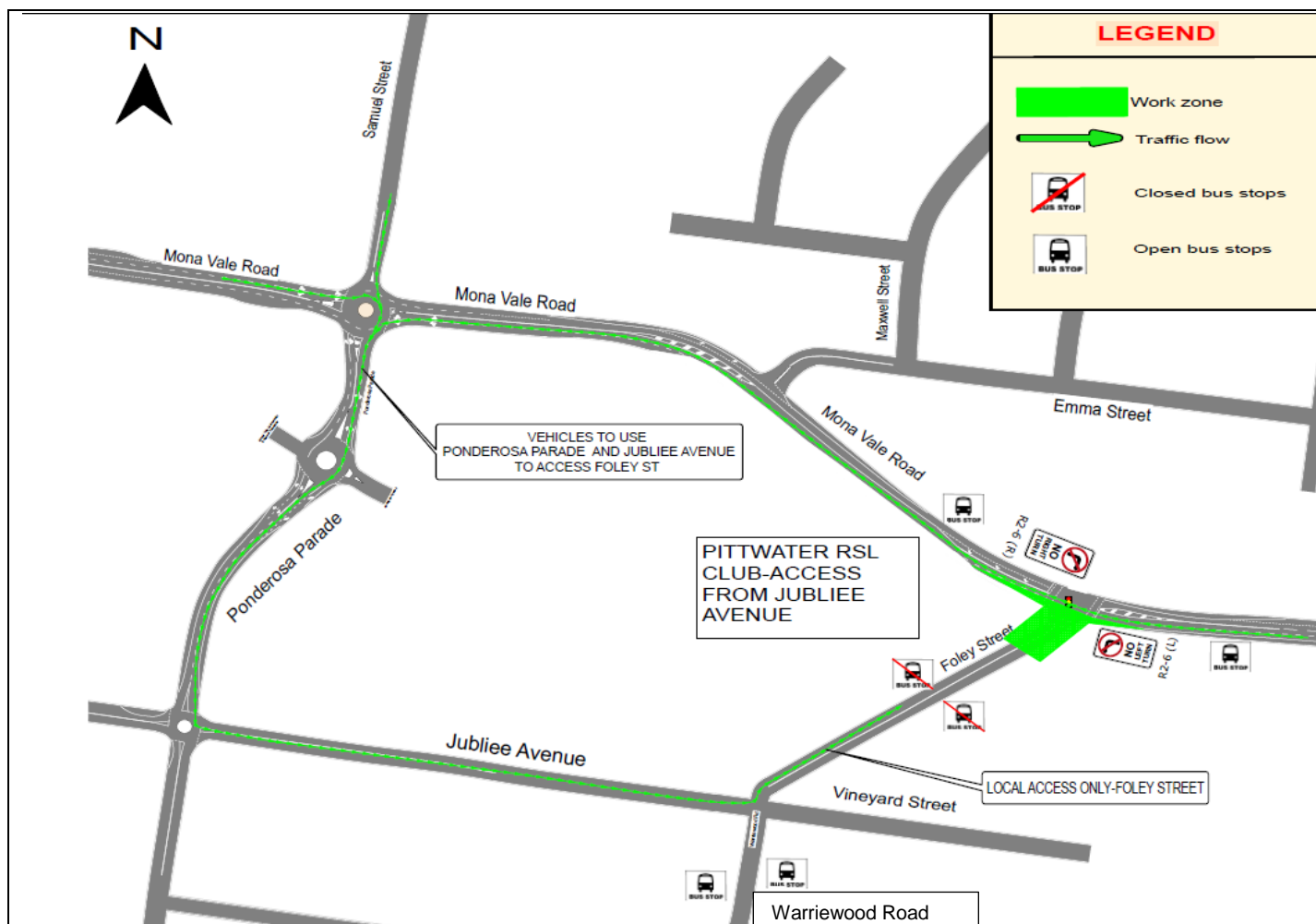
There may be some increased noise each day however we will minimise noise where possible and ensure we turn off equipment and vehicles when not in use.

The upgrade of the Foley Street and Mona Vale Road intersection will occur in stages. The first stage includes widening the intersection and building a new footpath. We will write to you again before starting the next stage of work.

Pedestrians and bus passengers

The affected bus stops on Foley Street (shown below) will be closed during the work from 9am to 4pm. Alternative bus stops are located further to the south on Warriewood Road or on Mona Vale Road. Signs will be in place to direct bus passengers and other pedestrians.

Map of affected area



Note: Plan is not to scale and is for general information and illustrative purposes only

Contact

We are committed to minimising the impact of construction on the community and will continue to keep you informed. If you have any questions, please contact our delivery contractor Georgiou Group.

Call: 1800 413 640 (during business hours)

Email: monavaleroad@georgiou.com.au

Website: rms.work/mvreast

Thank you for your patience during this important work

	If you need help understanding this information, please contact the Translating and Interpreting Service on 131 450 and ask them to call us on 1800 413 640.
131 450	