

Mona Vale Road East - Out of hours work

March 2020

Out of hours work will continue along Mona Vale Road and at the Samuel Street, Ponderosa Parade and Mona Vale Road roundabout. We will work between **8pm** and **5am** on the following dates, weather permitting:

Tuesday 3, Wednesday 4 and Friday 6 March

Tuesday 10, Thursday 12 and Friday 13 March

If work is delayed due to wet weather, we will try and work a different night within the same week. We will notify residents living closest to the work if the dates change from the above.

At the Samuel Street, Ponderosa Parade and Mona Vale Road roundabout we will:

- excavate for new utilities along Mona Vale Road between Ponderosa Road roundabout and Mona Vale Cemetery
- Pot hole along Samuel Street and Ponderosa Parade to investigate the road condition and locate utilities

Between Manor Road and Mona Vale Cemetery we will:

- remove rock material from the top of the existing rock cuttings
- install concrete barriers and screening along roadway
- continue ongoing road maintenance.

We will use excavators with buckets and hammers, tipper trucks, coring machine, road saws, street sweepers, light towers, rollers and light vehicles. A stop/slow arrangement will be in place with traffic controllers and signage directing traffic.

To minimise the impact of night work on residents, we do not work for more than two consecutive nights in the same area and will work only 10 days within the same month. If you are eligible for Alternative Accommodation you will be advised within 24 hours of the work.

Enquiries and registering for work updates

Please contact the community team for enquiries, feedback or any concerns you may have about the work.

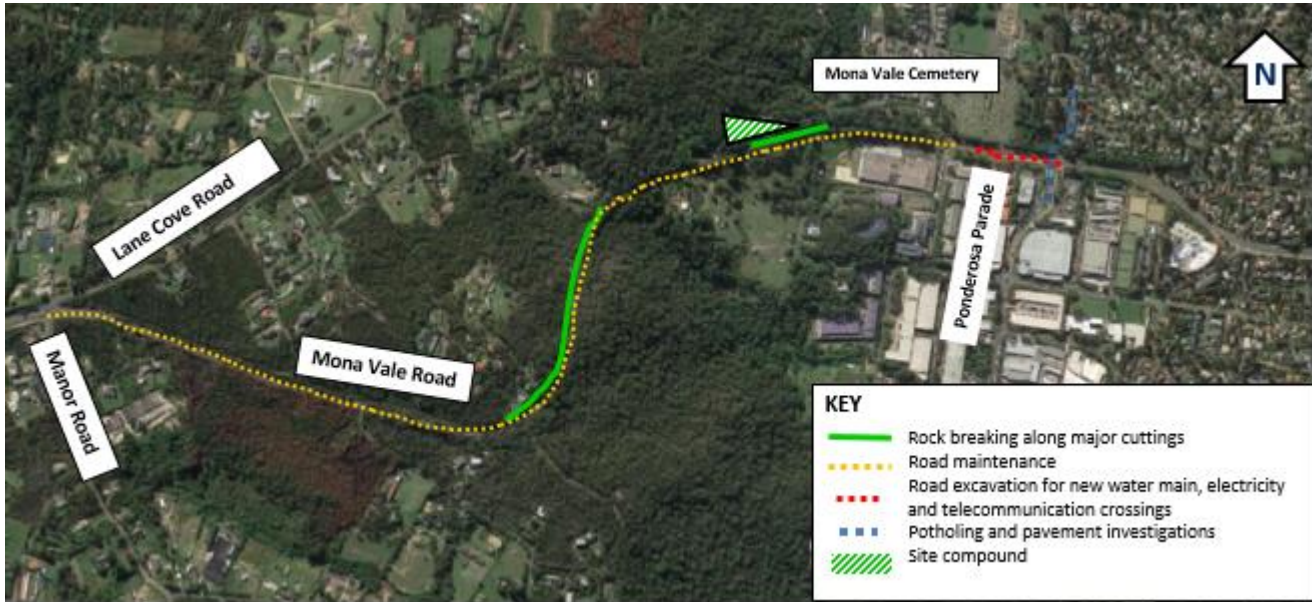
Call: 1800 413 640 (24 hour number).

Email: monavaleroad@georgiou.com.au

For more information: [rms.work/mvreast](https://www.rms.nsw.gov.au/work/mvreast)

If you need help understanding this information, please contact the Translating and Interpreting Service on 131 450 and ask them to call us on 1800 413 640.

Map showing location of out of hours work in Mona Vale Road East



Note: Shaded areas are approximations for general information and illustrative purposes only

Use of drone

A drone will be used during the last week of each month to take progress photos and assist with surveying the project. The drone will remain within the project area.