

## Mona Vale Road East - Out of hours work

April 2020

We recently made changes to our night work program so more work could be done during the day. However, the activities described below must be completed at night due to daytime traffic volumes and for safety reasons.

Out of hours work is planned from **8pm to 5am** on the following dates, weather permitting:

- **Tuesday 28, Wednesday 29 April and Friday 1 May**
- **Tuesday 5, Wednesday 6 and Friday 8 May**

If work is delayed due to wet weather, we will try and work a different night within the same week. We will notify highly impacted residents if there is a change of date.

Work along the eastern end of the project includes:

- road sawing to install drainage on Mona Vale Road near Walana Crescent, Narrabeen Creek, our main site office and near Daydream Street
- potholing investigations with a vacuum truck to identify underground services on Mona Vale Road near Daydream Street
- ongoing road maintenance.

Work along the western end of the project includes:

- removing rock material from the top of the existing rock cuttings near our site compound (opposite 120 Mona Vale Road), Ingleside Road and Laurel Road
- road sawing on Mona Vale Road near Manor Road and Lane Cove Road
- ongoing road maintenance.

We will use excavators with rock hammers, tipper trucks, vacuum trucks, road saws, a roller, street sweepers, light vehicles and light towers. A stop/slow arrangement will be in place with traffic controllers and signage directing traffic.

### Enquiries and registering for work updates

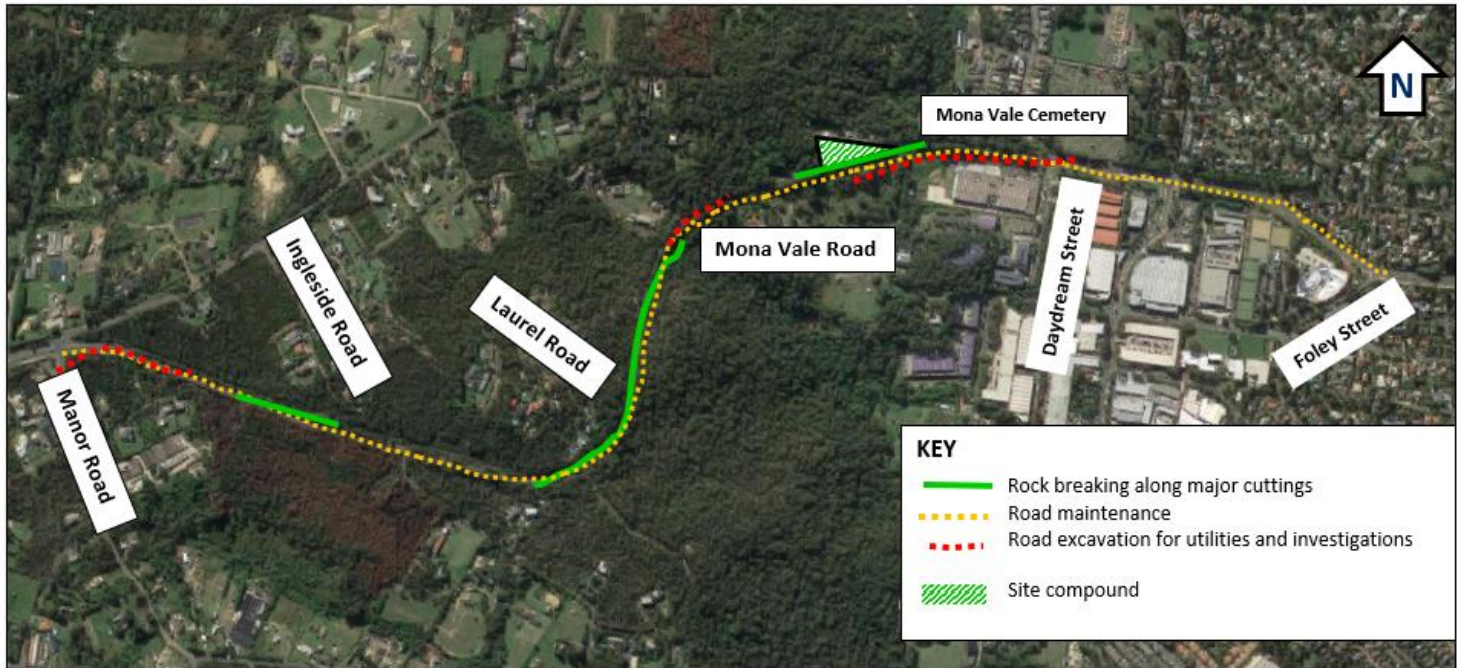
**Call:** 1800 413 640 (24 hour number).

**Email:** [monavaleroad@georgiou.com.au](mailto:monavaleroad@georgiou.com.au)

**For more information:** rms.work/mvreast

*If you need help understanding this information, please contact the Translating and Interpreting Service on 131 450 and ask them to call us on 1800 413 640.*

## Map showing location of out of hours work in Mona Vale Road East



Note: Shaded areas are approximations for general information and illustrative purposes only

### Extended working hours

You will soon receive a notification about extended working hours. From Monday 4 May 2020 we will be able to work Saturdays, Sundays and public holidays from 7am to 6pm. No high noise activities like rock breaking or pile driving will be done outside our standards hours (8am to 1pm on Saturdays).