

Mona Vale Road East - Out of hours work

Out of hours work is planned from **8pm to 5am** on the following dates, weather permitting:

- **Tuesday 16, Wednesday 17 and Friday 19 June**
- **Tuesday 23, Wednesday 24 and Friday 26 June**

If work is delayed due to wet weather, we will try and work a different night within seven days. We will notify highly impacted residents if there is a change of date.

To minimise the impact of night work on residents, we do not work for more than two consecutive nights in the same area and will work only 10 days within the same month. If you are eligible for Alternative Accommodation you will be advised within 24 hours of the work.

Work along the eastern end of the project includes:

- using a vacuum truck and an excavator to trench and install utilities under the Mona Vale Road, Samuel Street and Ponderosa Parade roundabout
- saw cutting to remove the concrete footpath from the eastern side of Samuel Street and replace it with a temporary footpath (for future utility relocation work)
- a vacuum truck and backhoe to excavate and confirm the location of services under Samuel Street
- ongoing road maintenance.

Work along the western end of the project includes:

- removing rock from the top of the existing rock cuttings near our site compound (opposite 120 Mona Vale Road), the eastern end of Lane Cove Road and near Laurel Road
- installing screens and relocating concrete barriers on Mona Vale Road near Laurel Road and the eastern end of Lane Cove Road
- ongoing road maintenance.

We will use excavators with rock hammers, backhoes, tipper trucks, elevated work platforms, hammer drills, a roller, saw cutters, street sweepers, a concrete truck, vacuum trucks, wacker packers, light vehicles and lighting towers. A stop/slow arrangement will be in place with traffic controllers and signage directing traffic.

Enquiries and registering for work updates

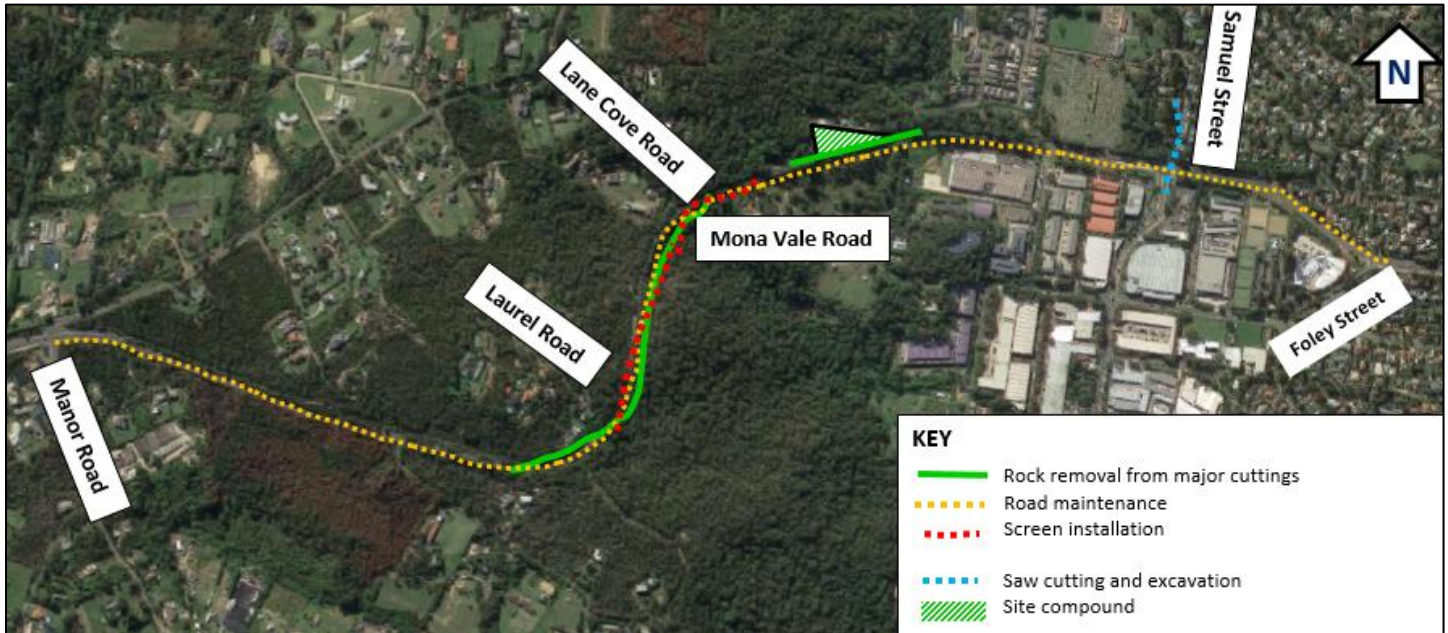
Call: 1800 413 640 (24 hour number).

Email: monavaleroad@georgiou.com.au

For more information: rms.work/mvreast

If you need help understanding this information, please contact the Translating and Interpreting Service on 131 450 and ask them to call us on 1800 413 640.

Map showing location of out of hours work on the Mona Vale Road East upgrade



Note: Shaded areas are approximations for general information and illustrative purposes only

Use of drone

A drone will be used during the last week of each month to take progress photos and assist with surveying the project. The drone will remain within the project area.