

Mona Vale Road East - Out of hours work

Out of hours work is planned from **8pm** to **5am** on the following dates, weather permitting:

- **Monday 1, Tuesday 2 and Thursday 4 June**
- **Tuesday 9, Wednesday 10 and Friday 12 June**

If work is delayed due to wet weather, we will try and work a different night within seven days. We will notify highly impacted residents if there is a change of date.

Work along the eastern end of the project includes:

- saw cutting, locating existing services using a vacuum truck for excavation and installing conduits across Mona Vale Road from Samuel Street to near the Hungry Jack's restaurant
- installing power poles eastbound along Mona Vale Road, from the Mona Vale Cemetery to the Mona Vale Road, Samuel Street and Ponderosa Parade roundabout
- ongoing road maintenance.

Work along the western end of the project includes:

- removing rock material from the top of the existing rock cuttings near our site compound (opposite 120 Mona Vale Road), Lane Cove Road and near Laurel Road

- installing screens and relocating concrete barriers on Mona Vale Road near Laurel Road and the eastern end of Lane Cove Road
- ongoing road maintenance.

We will use excavators with rock hammers, backhoes, tipper trucks, small cranes, hammer drills, a roller, street sweepers, concrete truck, wacker packer, light vehicles and light towers. A stop/slow arrangement will be in place with traffic controllers and signage directing traffic.

To minimise the impact of night work on residents, we do not work for more than two consecutive nights in the same area and will work only 10 days within the same month. If you are eligible for Alternative Accommodation you will be advised within 24 hours of the work.

Enquiries and registering for work updates

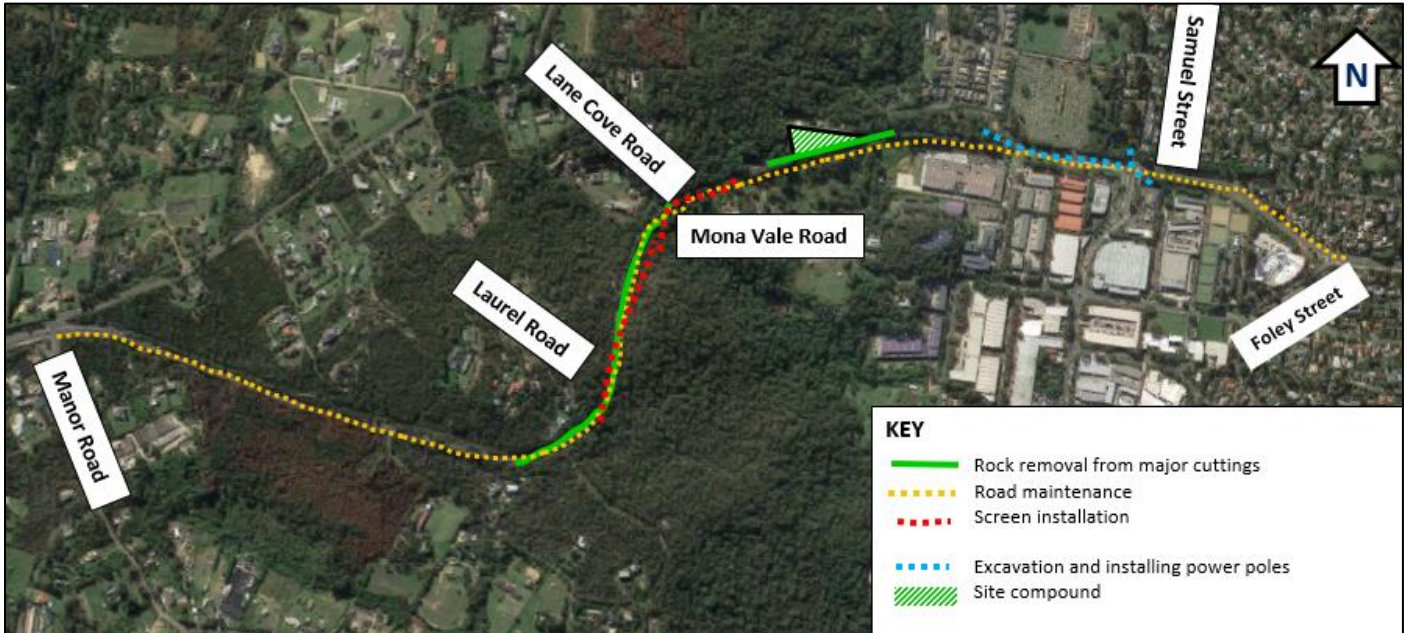
Call: 1800 413 640 (24 hour number).

Email: monavaleroad@georgiou.com.au

For more information: [rms.work/mvreast](https://www.rms.nsw.gov.au/work/mvreast)

If you need help understanding this information, please contact the Translating and Interpreting Service on 131 450 and ask them to call us on 1800 413 640.

Map showing location of out of hours work in Mona Vale Road East



Note: Shaded areas are approximations for general information and illustrative purposes only

Use of drone

A drone will be used during the last week of each month to take progress photos and assist with surveying the project. The drone will remain within the project area.