

Mona Vale Road East - Out of hours work

Out of hours work is planned from **8pm to 6am** on the following dates, weather permitting:

- **Monday 13, Tuesday 14, Thursday 16 and Friday 17 July**
- **Monday 20, Tuesday 21, Thursday 23 and Friday 24 July**

If work is delayed due to wet weather, we will try and work a different night within seven days. We will notify highly impacted residents if there is a change of date.

Work along the eastern end of the project will occur over three nights a week and includes:

- using a vacuum truck, road saw and an excavator to trench and install utilities under the Mona Vale Road, Samuel Street and Ponderosa Parade roundabout and about 40 metres up Samuel Street
- line marking, installing barriers, removing power poles and working on the traffic lights from the intersection of Mona Vale Road and Foley Street to about 80 metres to the east of that intersection
- trenching to install a sewer main at the intersection of Mona Vale Road and Foley Street
- ongoing road maintenance.

Work along the western end of the project (excluding near Tumburra Street) will occur over four nights a week and includes:

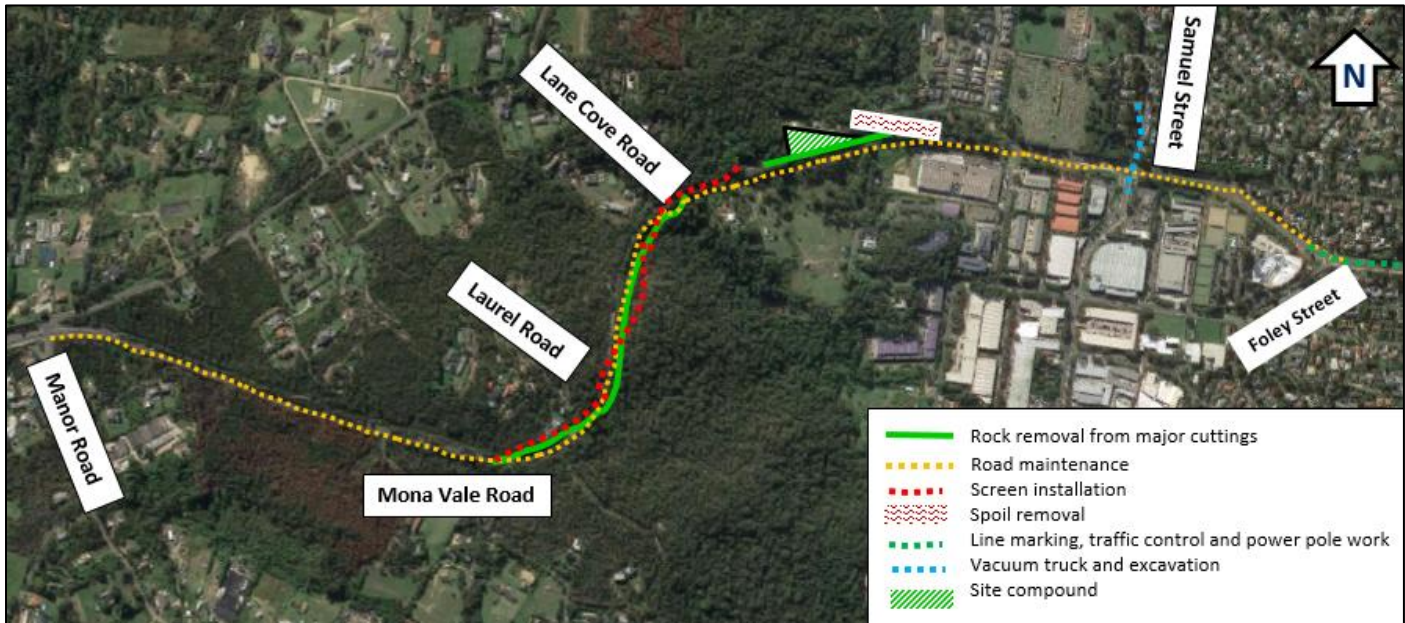
- removing rock from the top of the existing rock cuttings near our site compound (opposite 120 Mona Vale Road), the eastern end of Lane Cove Road, near the end of Laurel Road and near Tumburra Street
- installing screens and relocating concrete barriers on Mona Vale Road near the end of Laurel Road and the eastern end of Lane Cove Road
- removing spoil from our work area near Walana Crescent and Wallaby Circuit and near the eastern end Lane Cove Road
- ongoing road maintenance.

We will use excavators with rock hammers, backhoes, tipper trucks, elevated work platforms, a roller, saws, a crane, hammer drills, street sweepers, vacuum trucks, concrete trucks, line marking equipment, light vehicles and lighting towers.

A stop/slow arrangement will be in place traffic controllers and signage directing traffic.

If you are eligible for Alternative Accommodation you will be advised within 24 hours of the work.

Map showing location of out of hours work on the Mona Vale Road East upgrade



Note: Shaded areas are approximations for general information and illustrative purposes only

Use of drone

A drone will be used to take progress photos and assist with survey work. The drone will stay within the project area.

For more information call us on 1800 413 640, email monavaleroad@georgiou.com.au or visit rms.work/mvrest.
If you need help understanding this information, please contact the Translating and Interpreting Service on 131 450.