

Mona Vale Road East - Out of hours work

Out of hours work is planned from **8pm to 6am** on the following dates, weather permitting:

- **Monday 27, Tuesday 28, Thursday 30 and Friday 31 July**
- **Monday 3, Tuesday 4, Thursday 6 and Friday 7 August**

If work is delayed due to wet weather, we will try and work a different night within seven days. We will notify highly impacted residents if there is a change of date.

Please note that our planned extended working hours and closure of Mona Vale Road this coming weekend has been postponed due to forecast wet weather. We will advise new dates soon.

Work along the eastern end of the project will occur over three nights a week and includes:

- using a vacuum truck, road saw and an excavator to trench and install utilities under the Mona Vale Road, Samuel Street and Ponderosa Parade roundabout and about 40 metres up Samuel Street
- ongoing road maintenance.

Work along the western end of the project will occur over four nights a week and includes:

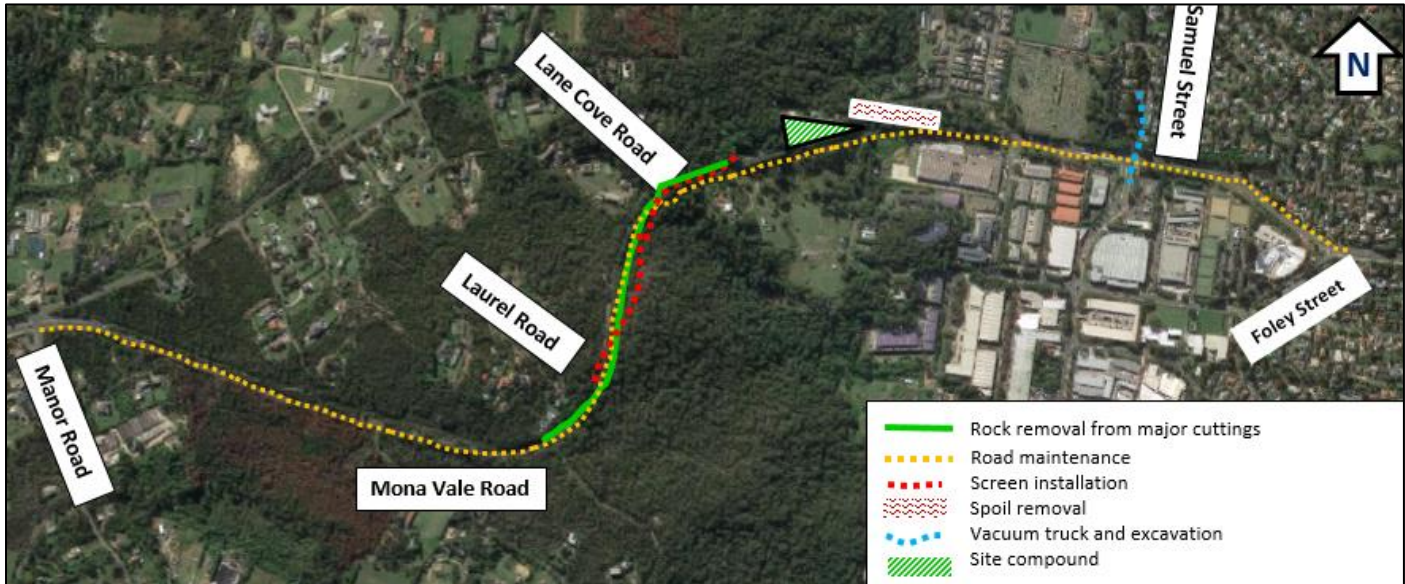
- removing rock from the top of the existing rock cuttings on Mona Vale Road near the eastern end of Lane Cove Road and near the end of Laurel Road
- installing screens and concrete barriers on Mona Vale Road near the eastern end of Lane Cove Road
- removing soil from our work area near Walana Crescent and Wallaby Circuit
- installing four new power poles, three near the eastern end of Lane Cove Road and one near our main site compound (30 Walana Crescent)
- ongoing road maintenance.

We will use excavators with rock hammers, backhoes, tipper trucks, a truck-mounted drill, elevated work platforms, a roller, saws, a crane, hammer drills, street sweepers, vacuum trucks, concrete trucks, light vehicles and lighting towers.

A stop/slow arrangement will be in place traffic controllers and signage directing traffic.

If you are eligible for Alternative Accommodation you will be advised within 24 hours of the work.

Map showing location of out of hours work on the Mona Vale Road East upgrade



Note: Shaded areas are approximations for general information and illustrative purposes only

Use of drone

A drone will be used to take progress photos and assist with survey work. The drone will stay within the project area.

For more information call us on 1800 413 640, email monavaleroad@georgiou.com.au or visit rms.work/mvrest.

If you need help understanding this information, please contact the Translating and Interpreting Service on 131 450.